

EW

ASSEMBLY INSTRUCTIONS

centor.com

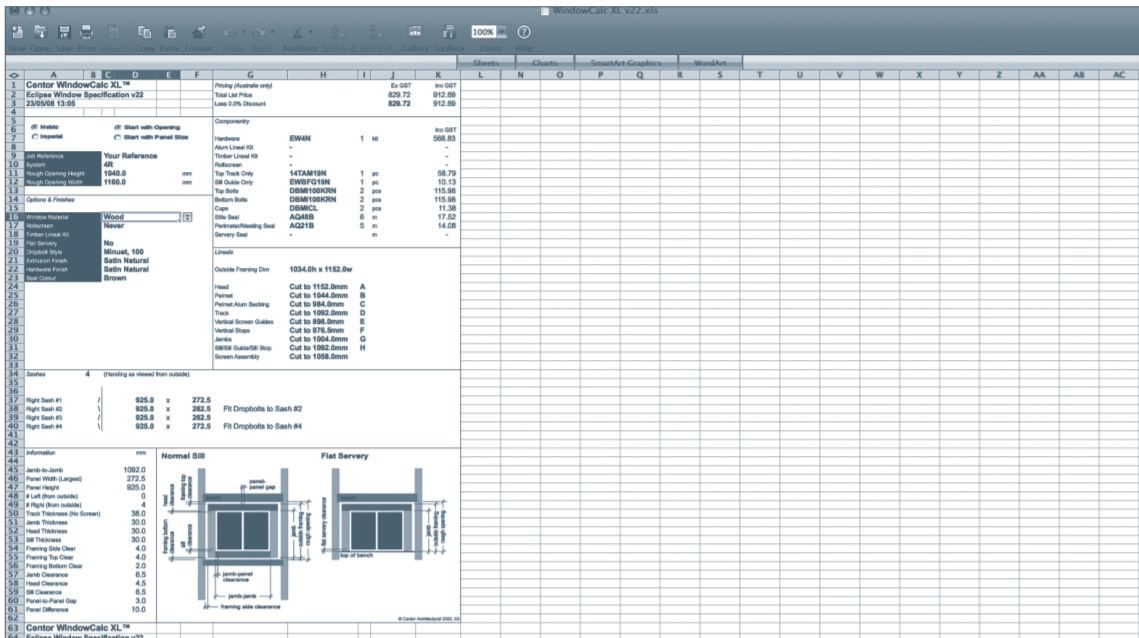
centor®

WINDOWCALC

Windowcalc XL spreadsheet

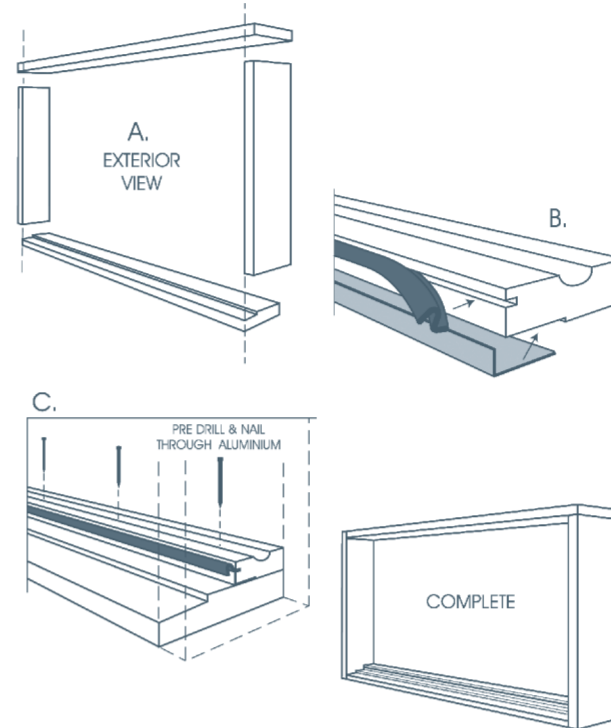
Centor Windowcalc XL is designed for the EW folding system with integral flyscreen. Windowcalc will operate on any system running Microsoft Excel 2000 or later.

Find the Windowcalc on the EW page visit www.centor.com.au



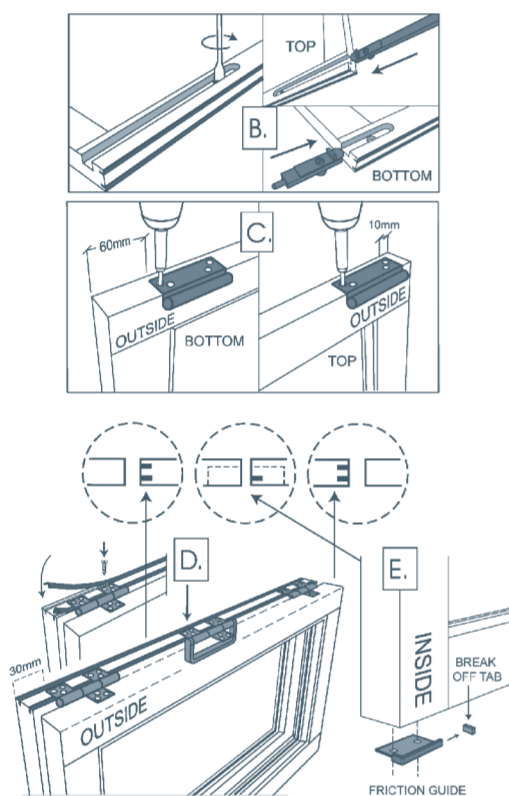
1. FRAME

(illustrations typical of a 2 left, 2 right configuration)



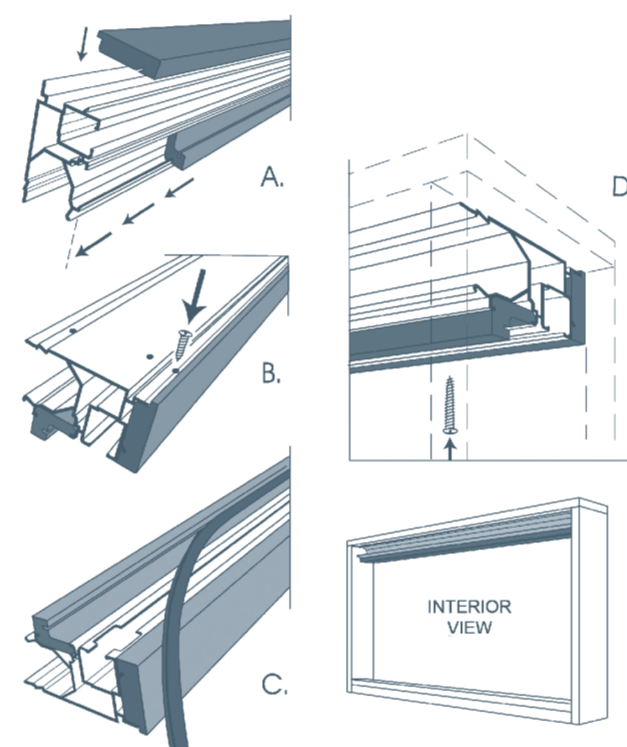
- Screw the frame together.
- Insert the seal (AQ21) and friction guide.
- Nail through the aluminium friction guide to secure the sill stop.

2. SASHES



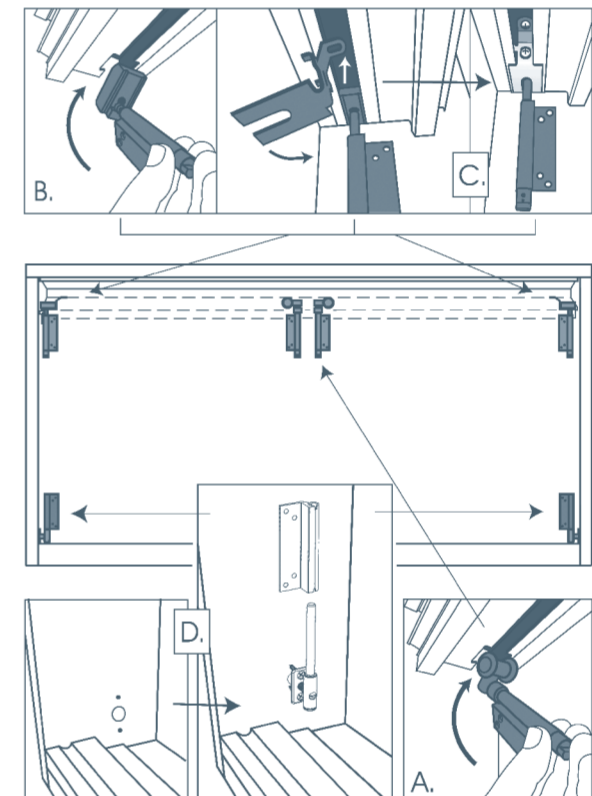
- Lay out the sashes to determine seal and dropbolt locations. (see Detail Section over)
- Route and drill for the dropbolts.
- Predrill for the carrier hardware.
- Install the hinges and insert the seals.
- Affix the friction guides.

3. TRACK



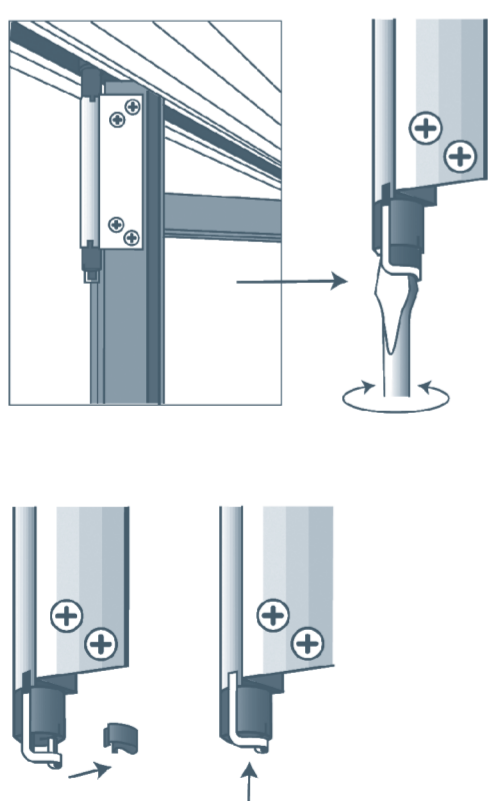
- Insert timber Head Stop & Face Board into pre-drilled track.
- Fix the Face Board.
- Insert the seal (AQ21).
- Fix the track into the frame.
note – clean track of drill shavings before installing hardware

4. HARDWARE



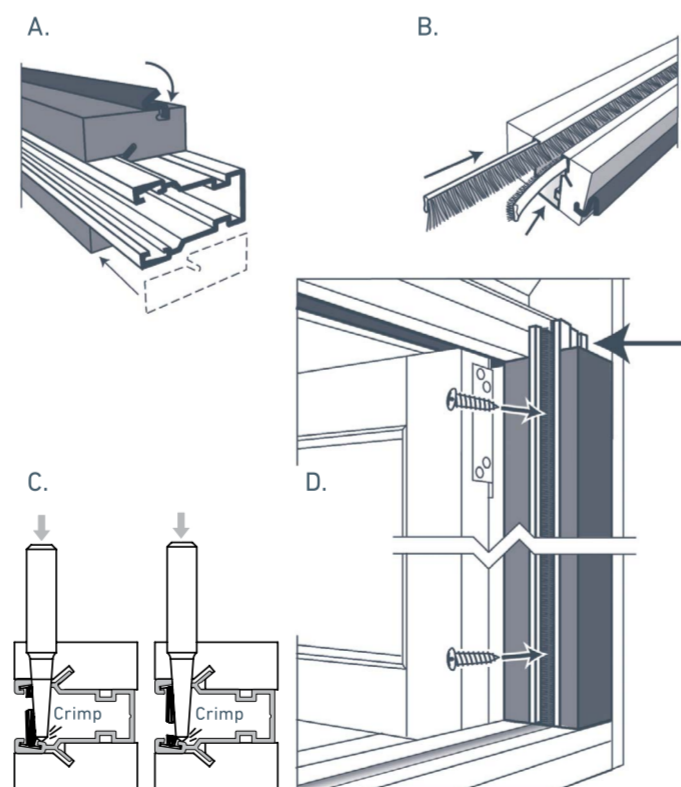
- Pass all hardware through the track cut out.
- Install Top Pivot.
- Secure Top Pivot Block with bracket.
- Drill diameter 13 hole (see over) and secure Bottom Pivot.

5. SURELOCK ADJUSTMENTS



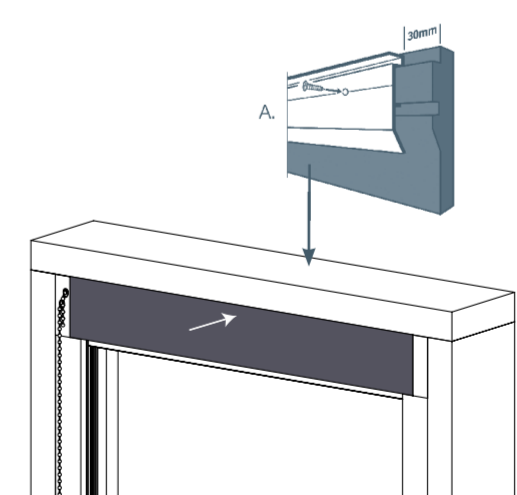
Adjust the window using the Surelock System.

6. SCREEN GUIDES



- Insert seal (AQ21) in the outer timber stops. Fit timber stops on the guide - stop (without AQ21) inside the building. Stops to be flush with bottom of guide (top has wings removed).
- Insert 'mohair' seals into guide. (longer hair to the inside of building).
- Crimp seals to the guide at the top only.
- Fix complete guides to frame.

7. FIT PELMET

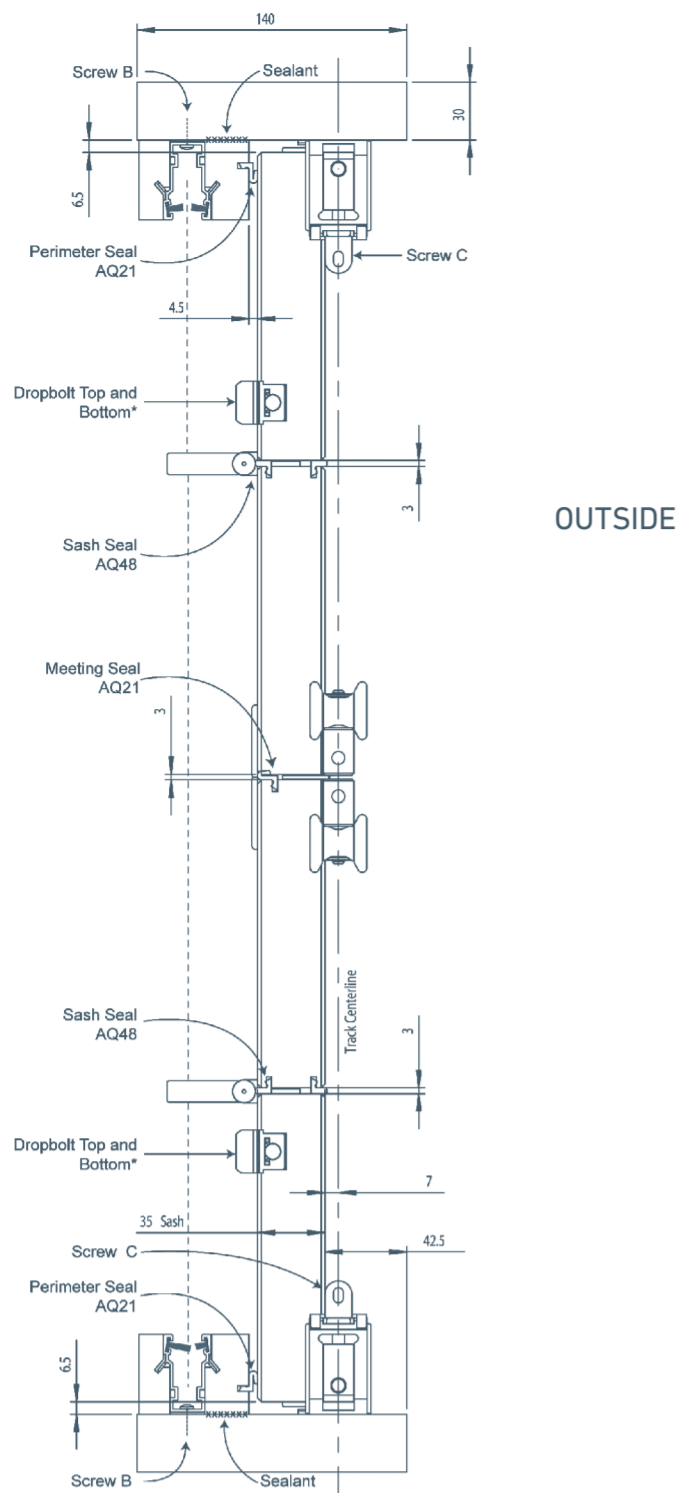


- Fix pelmet backing to pelmet and insert into frame.

FIXING DETAILS

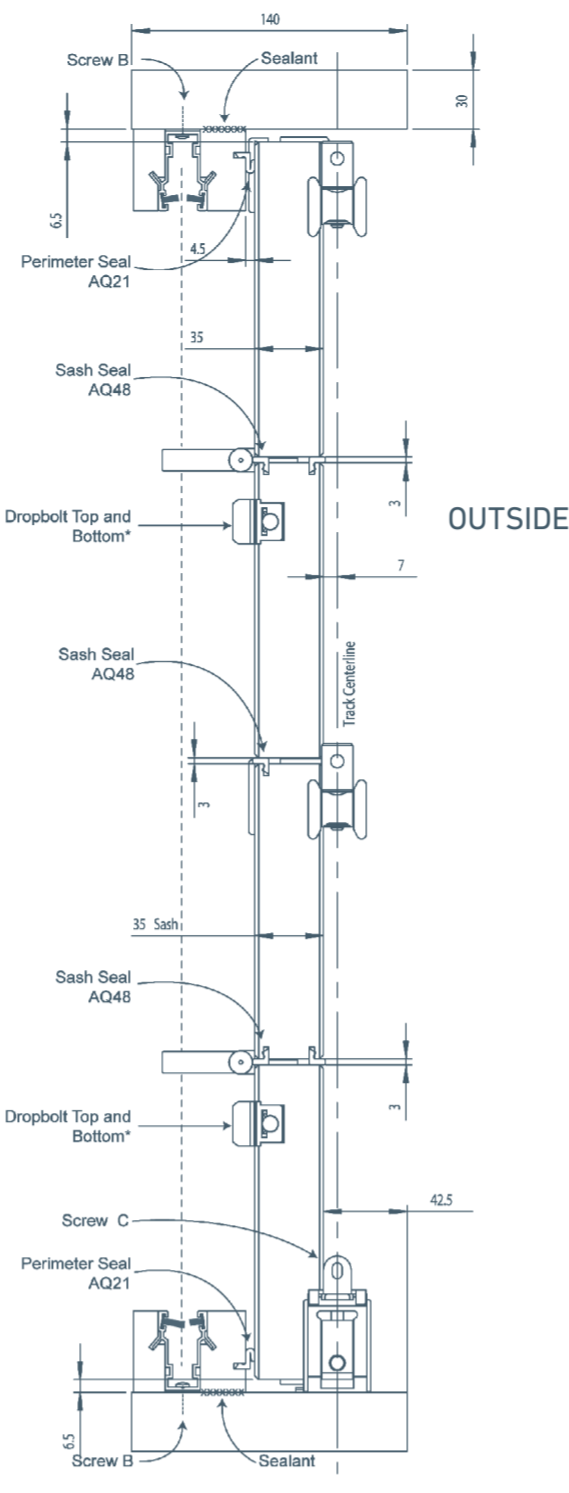
Screws	
Frame Joints	10# x 2 1/2" CSK
A	10# x 2" PAN@300 cntrs
B	8# x 1" PAN@400 cntrs
C	10# x 2" PAN
D	6# x 3/8" PAN@400 cntrs

1. DETAIL – 2L2R CONFIGURATION



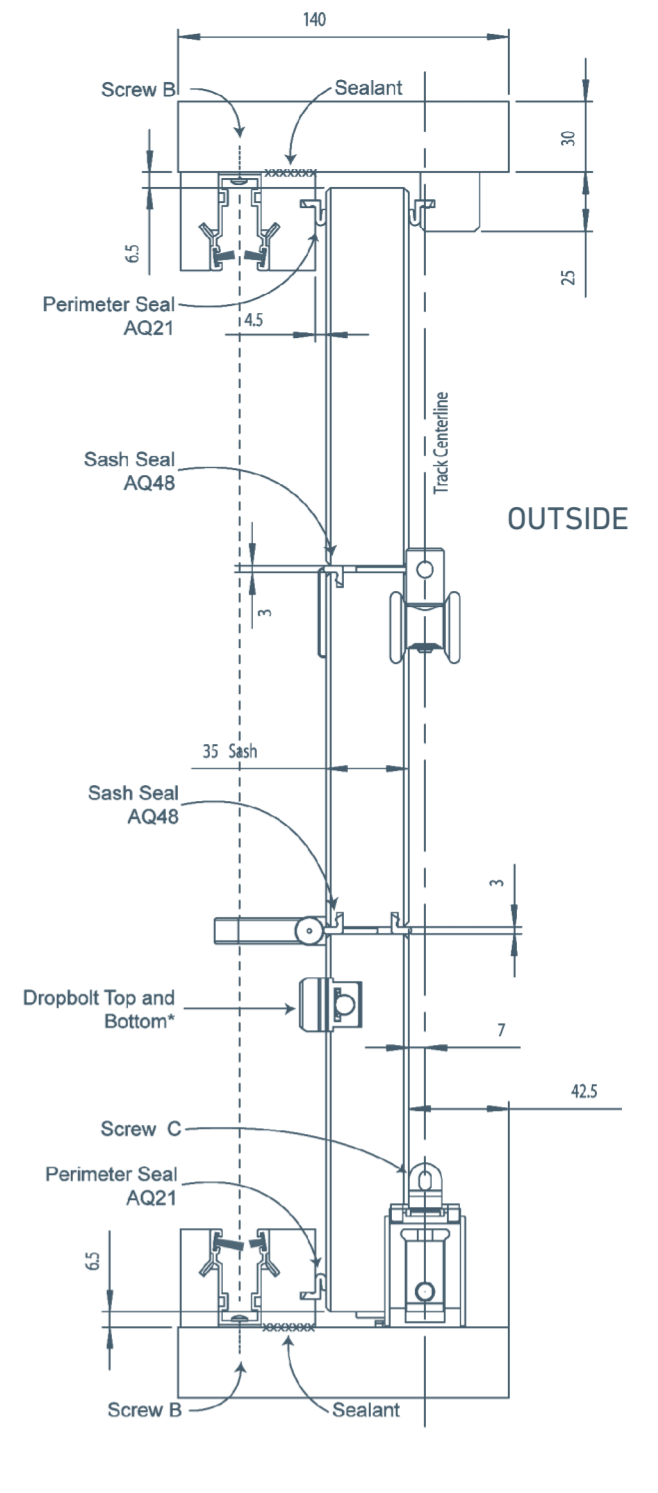
OUTSIDE

2. DETAIL – 4N CONFIGURATION



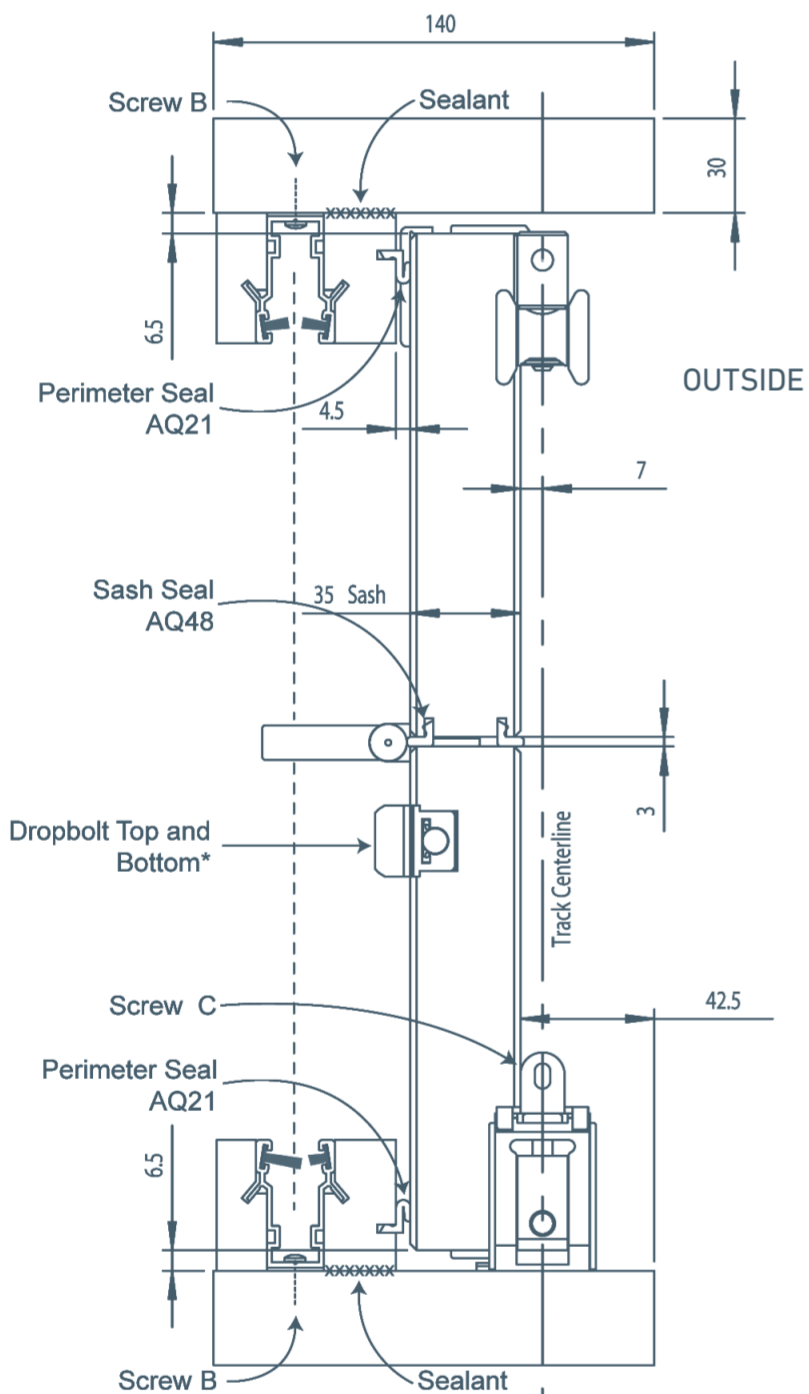
OUTSIDE

3. DETAIL – 3N CONFIGURATION



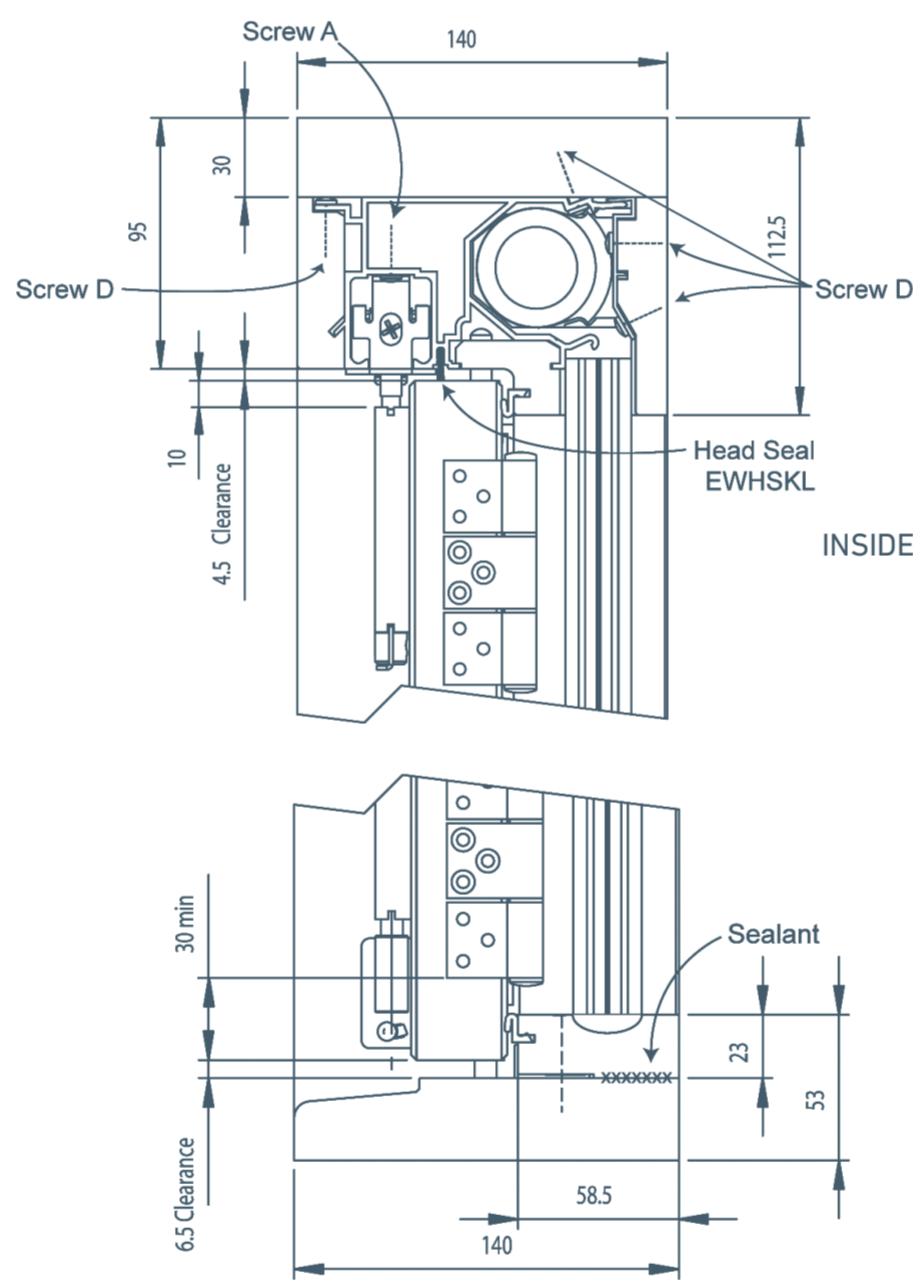
OUTSIDE

4. DETAIL – 2N CONFIGURATION



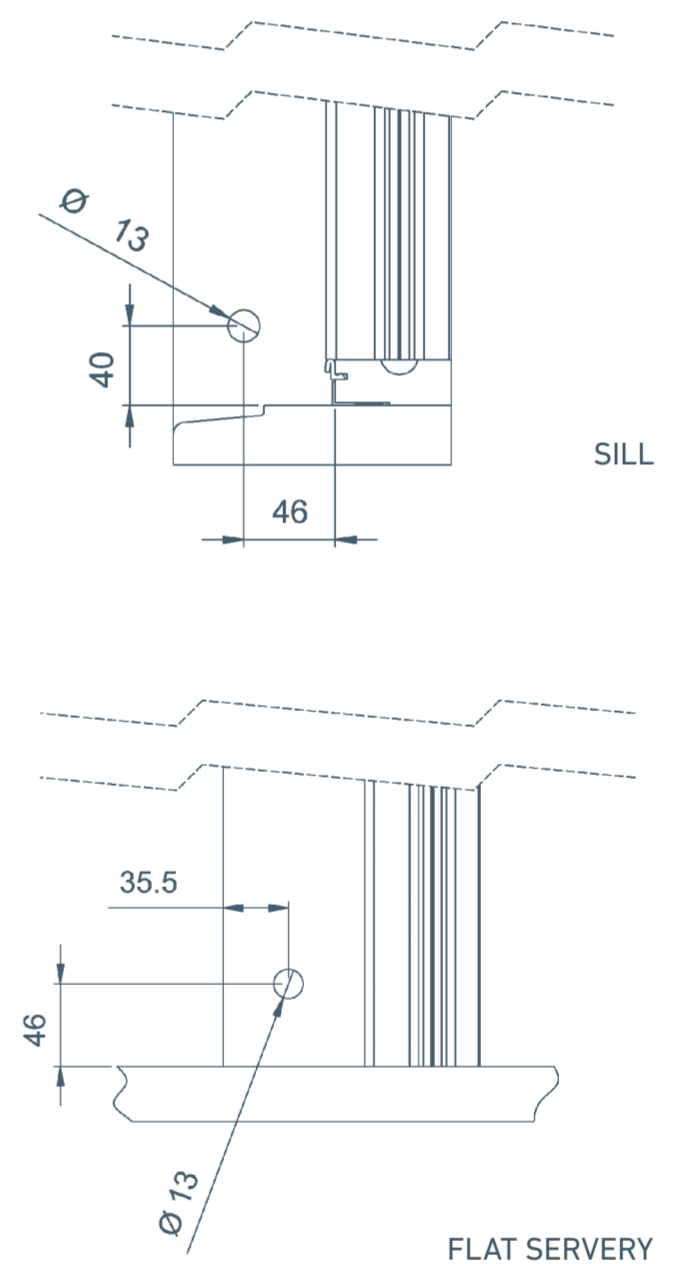
OUTSIDE

5. DETAIL – HEAD AND SILL



INSIDE

6. DETAIL – BOTTOM PIVOT HOLE POSITION



SILL

FLAT SERVERY

ACCESSORIES FITTING

2, 3 and 2L2R WINDOW SET
Stop location 150mm

3 WINDOW SET ONLY
Hold back magnets

3 WINDOW SET ONLY
To fit sash pin:
Fit striker plate to edge of sash.
Drill 5/16" diameter hole into sash through striker plate.
Temporarily locate pin in hole to find jamb pin location.
Drill 5/16" diameter hole into jamb and fit pin into hole.

4 WINDOW SET
Clip location 220mm

2L2R WINDOW SET ONLY
set striker

