

## S4 Screen and Shade System



The award-winning S4 Screen and Shade System enables homeowners with large door openings to enjoy the luxury of inside-outside living without the traditional compromises – insects, glare and loss of privacy. Operating with just a fingertip, Centor's unique load balancing technology allows screens and shades to glide smoothly across the whole door opening to effortlessly stop at any desired position. When not in use, the screen or shade retracts discreetly into the frame removing visual distractions to the view outside whilst also protecting it from damage, dust or dirt.

### S4 Features

- Pair with new or existing doors or windows.
- Operates from any height with one hand so the youngest of family members can operate the screen.
- Screen and shade fabrics are held securely in place by top and bottom tabs, preventing screen blow-out – even in a breeze.
- The screen and shade are fully retained within the frame on all sides to allow total control of insects, sunlight and privacy.
- Can be mounted on the inside or outside – drainage holes are added to the sill for externally mounted systems.
- Sill cover is quick and easy to remove to make cleaning trouble free.
- Backed by a 5-year limited warranty.

### Frame size

Suited for larger door openings, S4 can go up to 3200mm high and 9185mm wide.<sup>1</sup>

Fabric type	Overall frame width (mm)			Overall frame height (mm)	Install location	
	Single	Combo	Double <sup>2</sup>		Inside	Outside
Standard weave mesh	1015 – 4611	1015 – 4676	1015 – 9013	815 – 3200	✓	✓
Tight weave mesh	1015 – 4611	1015 – 4676	1015 – 9013	815 – 3200	✓	✓
Air weave mesh <sup>3</sup>	1015 – 4697	1015 – 4762	1015 – 9185	815 – 3200	✓	✓
Boston, blackout	1015 – 3377	1015 – 3442	1015 – 6545	815 – 3002	✓	
Boston, light-filtering	1015 – 3577	1015 – 3642	1015 – 6945	815 – 3002	✓	
Tuscany, blackout	1015 – 3377	1015 – 3442	1015 – 6545	815 – 3002	✓	
Tuscany, light-filtering	1015 – 4011	1015 – 4076	1015 – 7813	815 – 3002	✓	
Mercury, blackout	1015 – 4011	1015 – 4076	1015 – 7813	815 – 3002	✓	
Mercury, light-filtering	1015 – 4611	1015 – 4676	1015 – 9013	815 – 3002	✓	
Sun-filter	1015 – 3377	1015 – 3442	1015 – 6545	815 – 3200	✓	✓

<sup>1</sup> Fabric widths are established by fabric thickness. Variations in fabric thickness may mean the maximum width can not be achieved. In these cases we offer an alternative colour or fabric type or an extended lead time to allow fabric to be resupplied from the mill.

<sup>2</sup> All screens over 5910mm with require frame joiners to the head and sill.

<sup>3</sup> Air weave mesh is coming soon. Please discuss availability with your Centor Representative.



reddot design award  
best of the best 2019

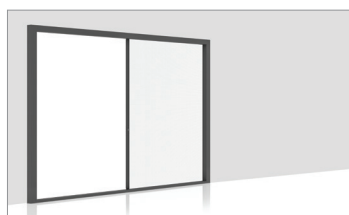


GOOD  
DESIGN  
AWARD®  
GOLD WINNER

## Configurations

The S4 Screen and Shade System complements large sliding and folding doors. It can be fitted to the inside or outside of the opening so you can maximise inside-outside living to its full potential.

Screens and shades are available in three configurations:



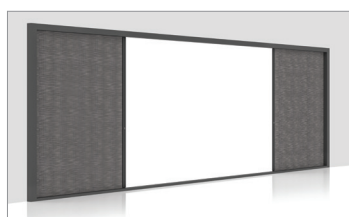
### Single

A single screen or shade that extends from one side of the frame and covers the full width of the opening.



### Combination

A combination of two fabric types, with one housed in each side of the frame, such as a screen from the left and a shade from the right.

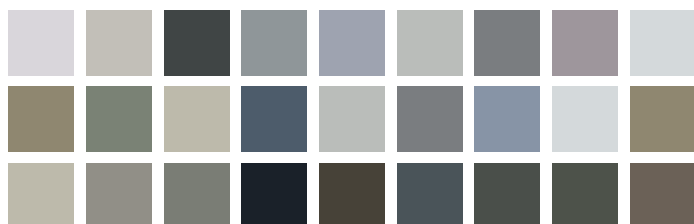


### Double

Two screens or shades (in the same fabric option), which meet at any point along the opening.

## Aluminium frame

S4 is constructed from durable aluminium and can be painted in any RAL colour for full personalisation.



## Shades

### Interior shades

Luxury shade fabrics available in exterior, light-filtering and blackout with a choice of stylish patterns and a range of colours to suit every home.

#### Boston



Marshmallow



Quartz



Silver



Monument



Charcoal

#### Tuscany



White



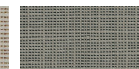
Parchment



Eggshell

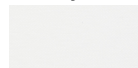


Ash

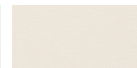


Pewter

#### Mercury



White



Snow



Silver



Ash



Steel

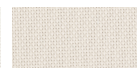
### Exterior shades

Sun-filtering fabric that is designed for outdoor use. The exterior shade is perfect for systems that are specified to be used on the outside of the opening.

#### Sun-filter



White



Sand



Light Grey



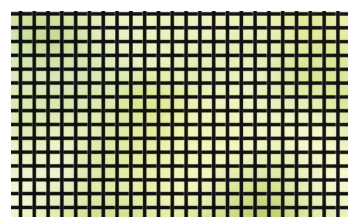
Dark Grey



Charcoal

## Insect screens

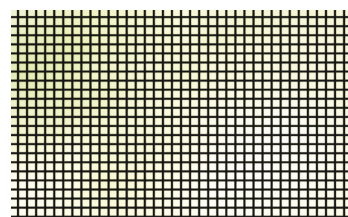
Screen mesh is available in three different weave styles with no pleats or sliding panels to detract from the view:



### Standard weave

Keeps insects like moths, flies and mosquitoes outside, while standing the test of time with a durable polyester/PVC mesh construction.

Openness: 46%



### Tight weave

Made from the same durable material as our standard weave but features a smaller aperture to protect homeowners against tiny insects like midges.

Openness: 37%