

*TwinPoint Gen2*  
**HANDLES**



*Folding door lock with internal and external access*

centor®

<b>File download information</b>	<b>3</b>
----------------------------------	----------

---

**Product details**

Stainless steel	4 - 10
Zinc diecast	11 - 18
Handle backset	19

---

**Download options**

Centor's brochures, technical documents and drawings can be downloaded from;

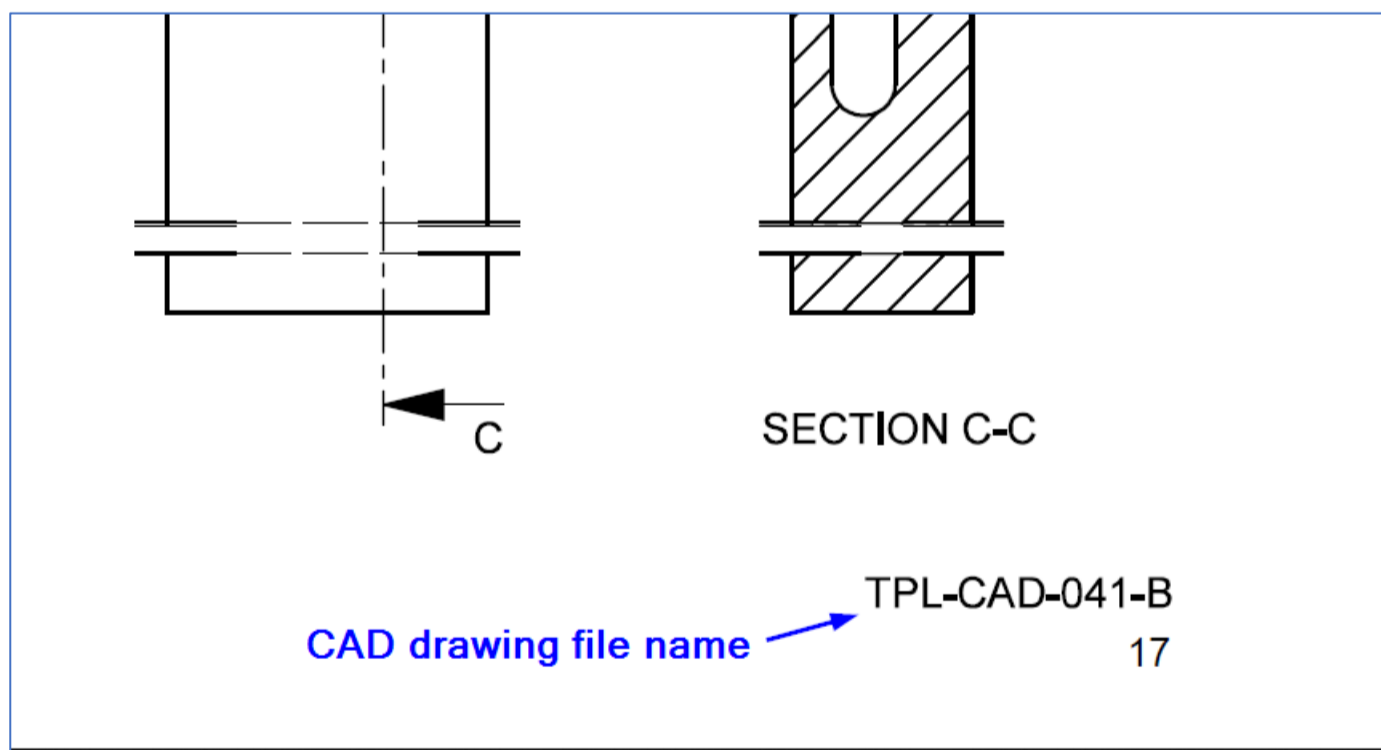
1. Bottom of the TwinPoint Gen2 website page
2. Professional section of Centor's webpage
3. This link. <https://centor.com/us/hardware-systems/accessories/centor-twinpoint-lock>

Downloads	
TwinPoint Gen2 Brochure	pdf
TwinPoint Gen2 Hollow Panels technical document	pdf
TwinPoint Gen2 Wood Panels technical document	pdf
TwinPoint Gen2 Drawings (dwg)	zip
TwinPoint Gen2 Drawings (dxf)	zip

**2D CAD drawing download**

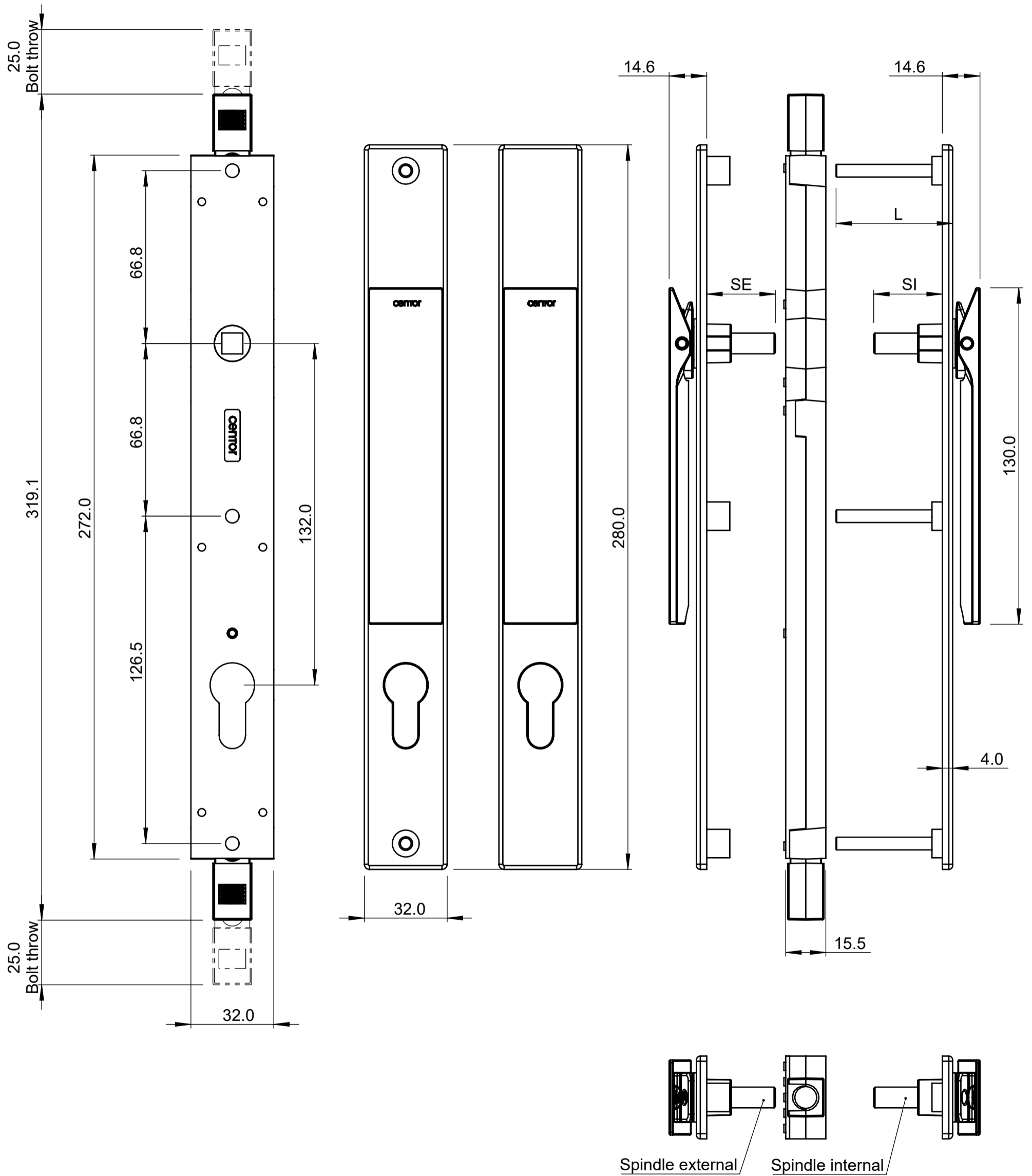
The drawings download provides a folder that contains all the drawings.

1. There are two folders. One for dwg and one for dxf.
2. Use the technical documents as an index to select the appropriate drawing. The drawing file name is printed at the bottom right corner of the page.



STAINLESS STEEL HANDLES H01

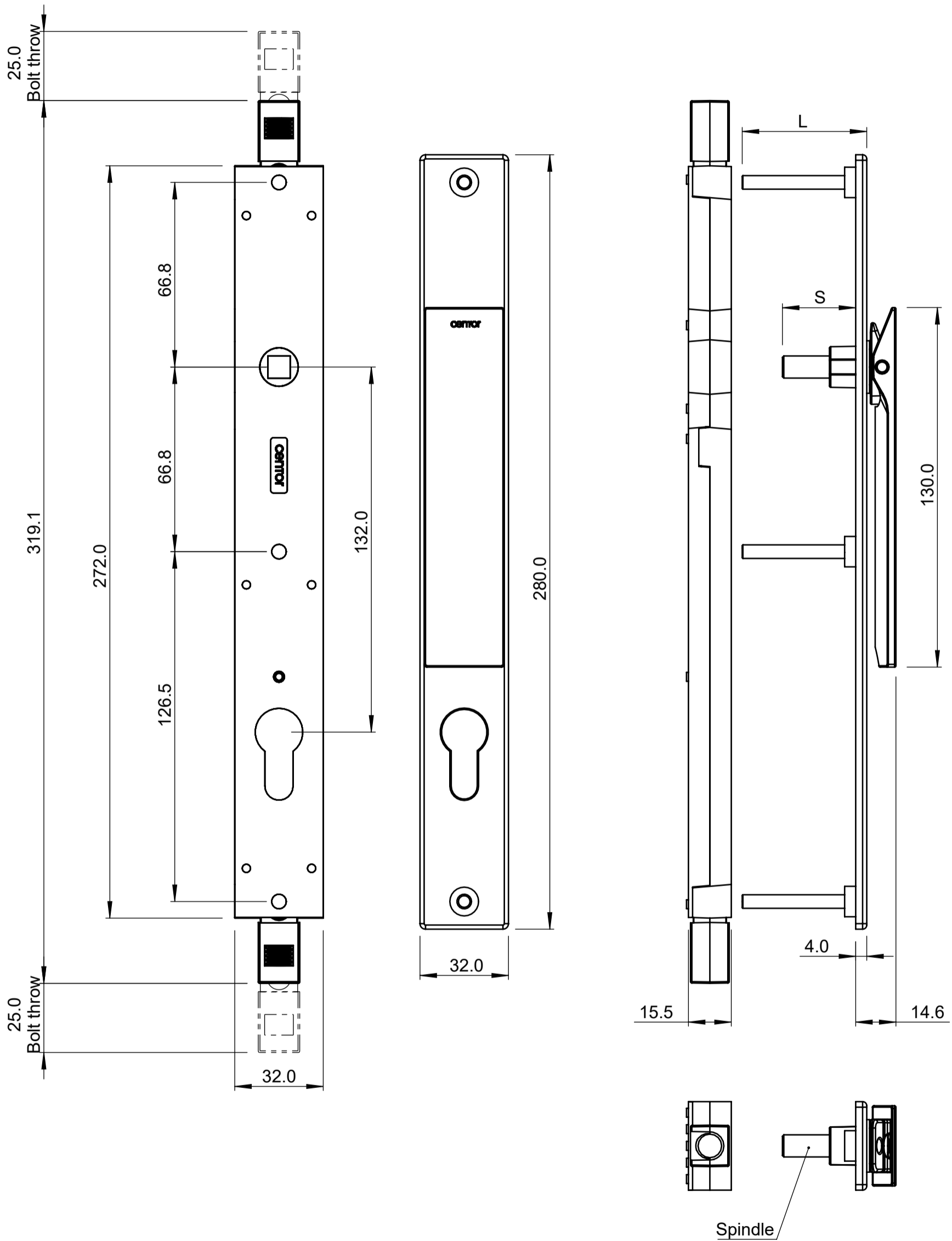
PRODUCT DETAIL - DOUBLE HANDLE, KEYED, LONG



Notes:  
The spindles are factory fitted into the handles and cannot be removed.

STAINLESS STEEL HANDLES H01

PRODUCT DETAIL - SINGLE HANDLE, KEYED, LONG

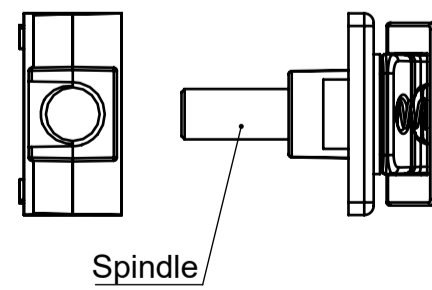
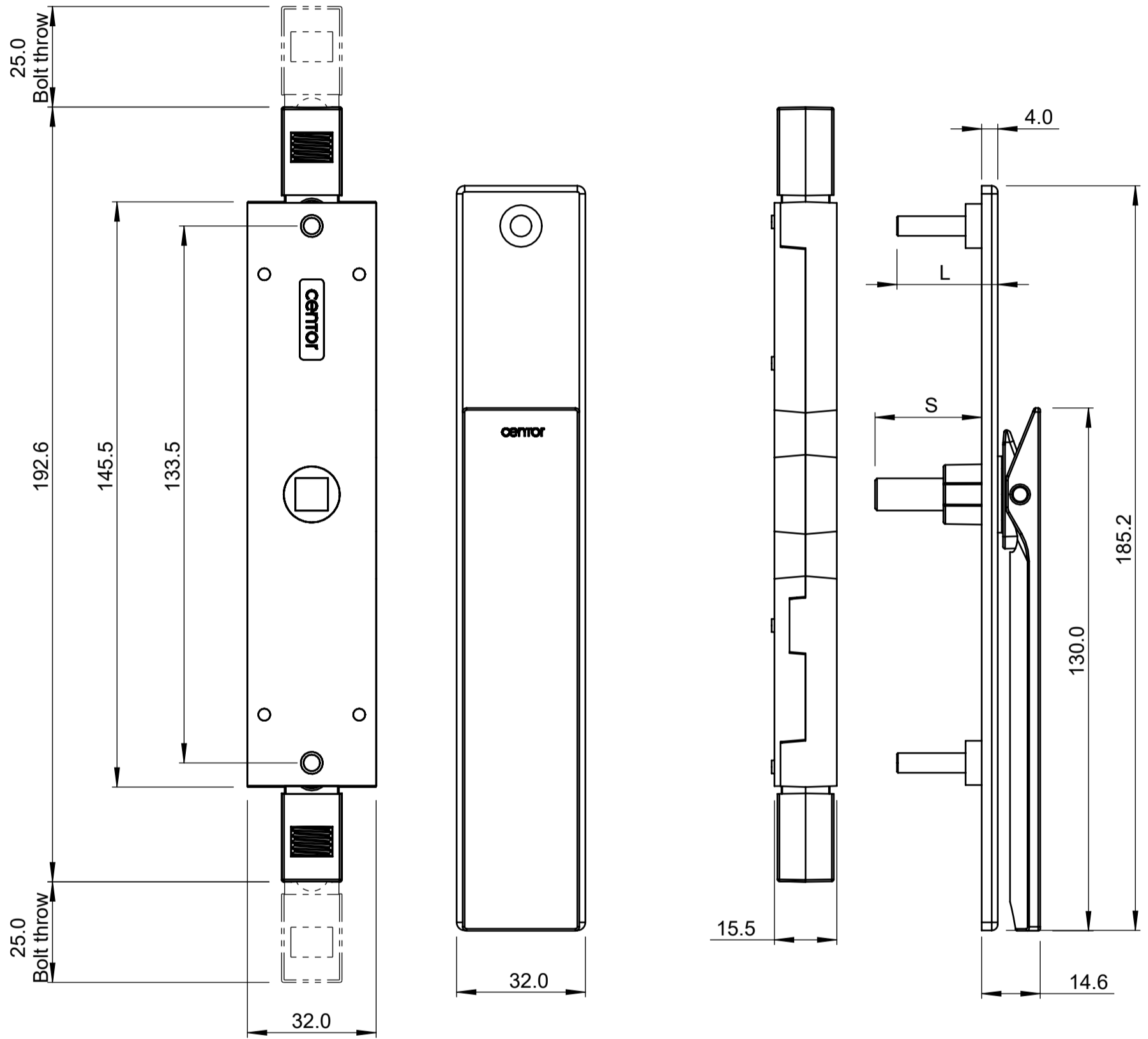


Notes:  
The spindle is factory fitted into the handle and cannot be removed.



STAINLESS STEEL HANDLES H01

PRODUCT DETAIL - SINGLE HANDLE, NON-KEYED, SHORT

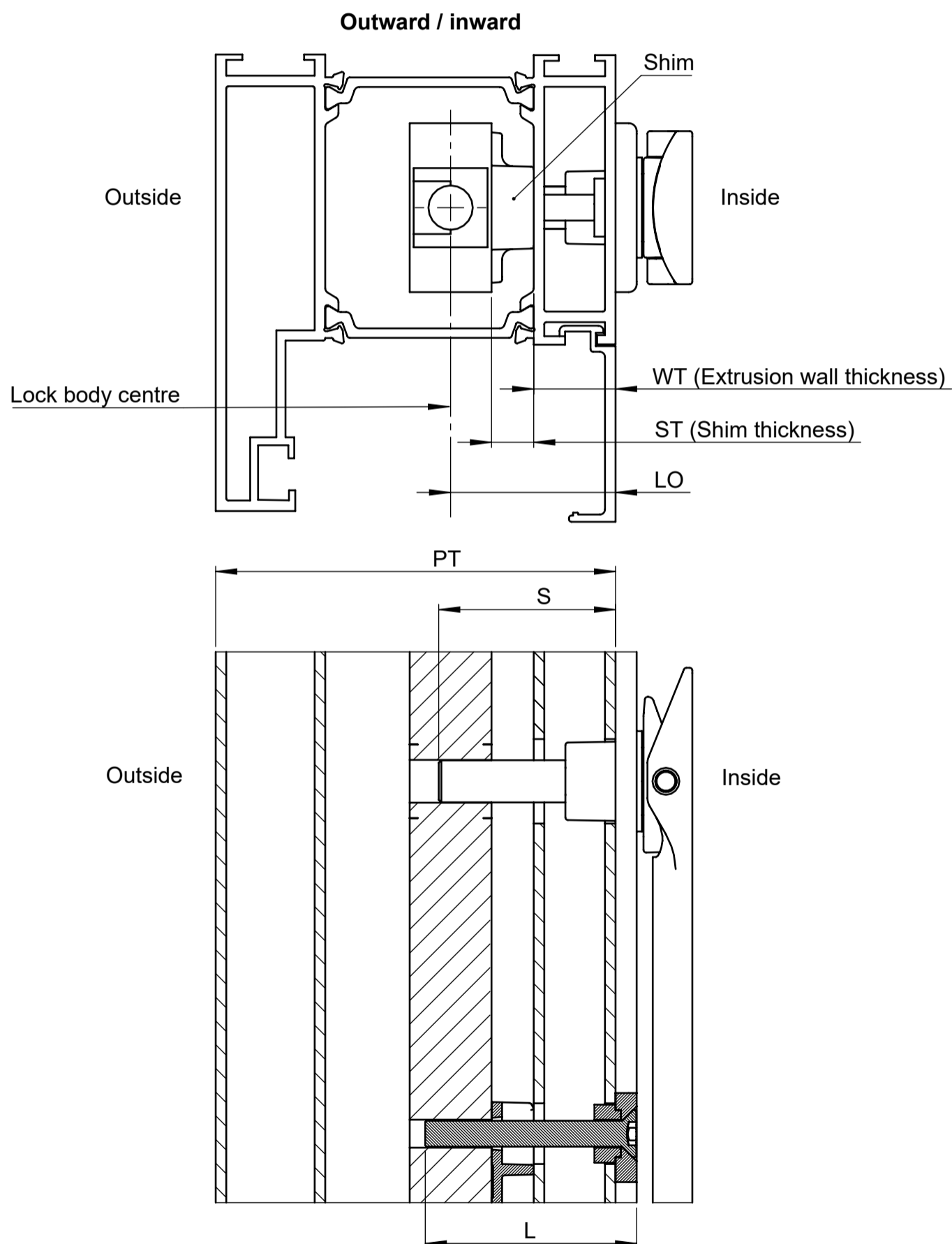


Notes:  
The spindle is factory fitted into the handle and cannot be removed.

# STAINLESS STEEL HANDLES H01 SPINDLE & SCREWS - HOLLOW PANELS, SINGLE HANDLES

## Standard single handle kits

Handle item#	Spindle length S	Screw length L	Opening	Panel thickness PT	Lock body offset LO	
					Min.	Max.
TPL-002-C-* or TPL-024-C-*	20.5	25	Any	Any	17.5	22.0
TPL-002-G-* or TPL-024-G-*	29.5	35				32.0
TPL-002-K-* or TPL-024-K-*	34.5	40				37.0
TPL-002-M-* or TPL-024-M-*	44.5	50				47.0
TPL-002-O-* or TPL-024-O-*	54.5	60				57.0
TPL-002-Q-* or TPL-024-Q-*	64.5	100				67.0
TPL-002-R-* or TPL-024-R-*	69.5					72.0



**Notes:**

1. The lock body offset is the distance from the inside face of the panel to the centre of the lock body.
2. For keyed handles, the lock cylinder may protrude depends on the lock body offset. Refer to the LOCK CYLINDER section in HOLLOW PANEL TECHNICAL DOCUMENT for detail.
3. The spindle and screws can extend through the lock body provided they don't interfere with the stile.
4. Use the formulas in the table below to calculate the length in the event that the spindle and screws need to be cut.

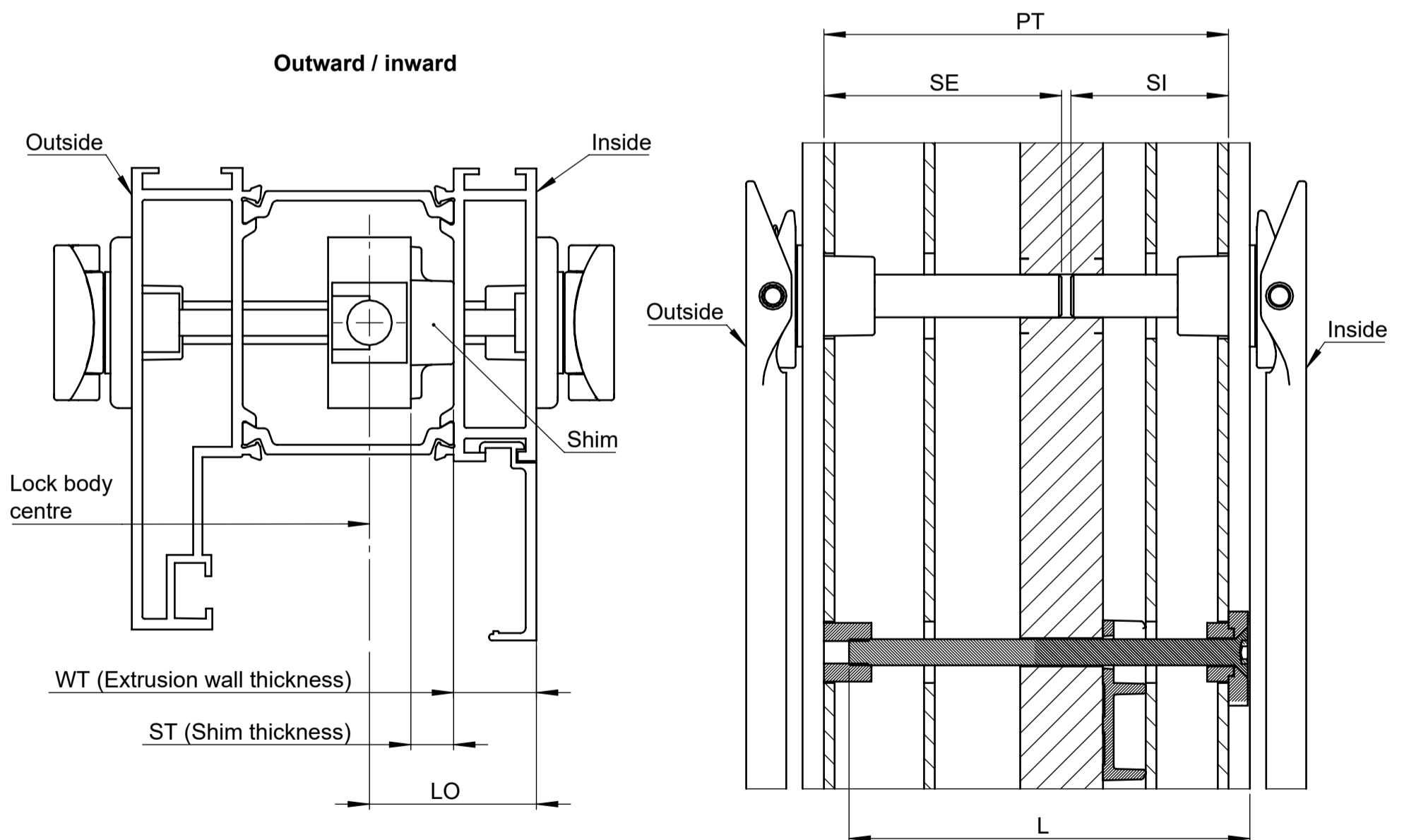
Lock body offset	Minimum spindle length	Minimum screw length
$LO = WT + ST + 7.75\text{mm}$	$S_{\text{min}} = LO - 2.0\text{mm}$	$L_{\text{min}} = LO - 1.0\text{mm}$

# STAINLESS STEEL HANDLES H01

## SPINDLE & SCREWS - HOLLOW PANELS, DOUBLE HANDLES

### Standard double handle kits

Handle item No.	Spindle length internal SI	Spindle length external SE	Screw length L	Opening	Panel thickness PT		Lock body offset LO	
					Min	Max	Min	Max
TPL-001-JG-*	23.5	29.5	60	Outward	53.0	58.0	22.0	26.0
TPL-001-JK-*		34.5			58.0	63.0		
TPL-001-JL-*		39.5			63.0	68.0		
TPL-001-JM-*		44.5			68.0	73.0		
TPL-001-JN-*		49.5			73.0	78.0		
TPL-001-JO-*		54.5			78.0	83.0		
TPL-001-JP-*		59.5			83.0	88.0		
TPL-001-JQ-*		64.5			88.0	93.0		
TPL-001-JR-*		69.5			93.0	98.0		
TPL-001-GJ-*		29.5			23.5	100		
TPL-001-KJ-*	34.5	58.0	63.0	32.0			37.0	
TPL-001-LJ-*	39.5	63.0	68.0	37.0			42.0	
TPL-001-MJ-*	44.5	68.0	73.0	42.0			47.0	
TPL-001-NJ-*	49.5	73.0	78.0	47.0			52.0	
TPL-001-OJ-*	54.5	78.0	83.0	52.0			57.0	
TPL-001-PJ-*	59.5	83.0	88.0	57.0			62.0	
TPL-001-QJ-*	64.5	88.0	93.0	62.0			67.0	
TPL-001-RJ-*	69.5	93.0	98.0	67.0			72.0	



### Notes:

1. The lock body offset is the distance from the inside face of the panel to the centre of the lock body.
2. For lock cylinder protrusion, refer to the LOCK CYLINDER section in HOLLOW PANEL TECHNICAL DOCUMENT for detail.
3. For inward opening, the 100mm long screws need to be cut. Use the formulas in the table below to calculate the length.

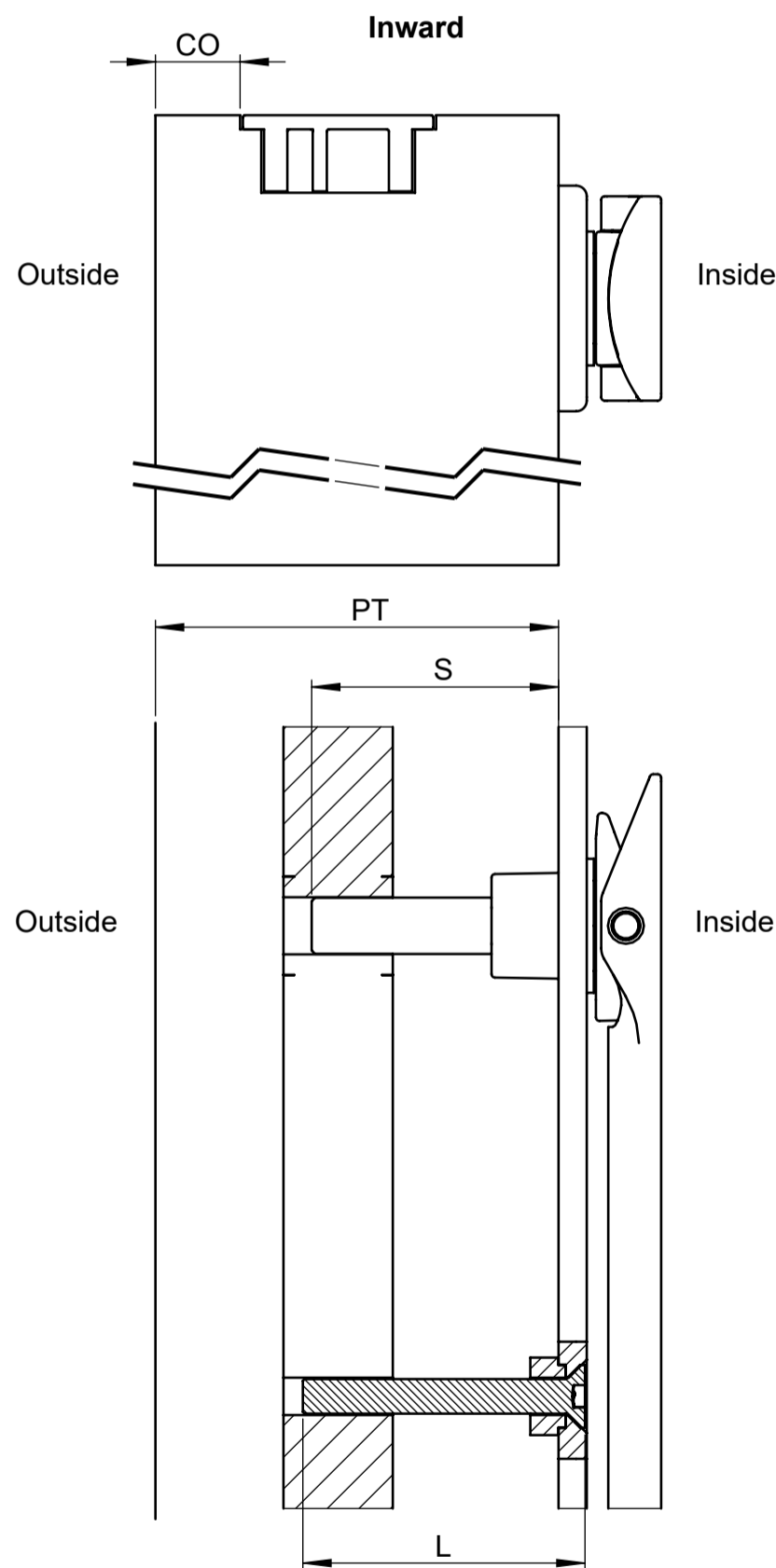
Lock body offset	Screw length	
$LO = WT + ST + 7.75\text{mm}$	$L_{\text{min}} = PT$	$L_{\text{max}} = PT + 4.0\text{mm}$



# STAINLESS STEEL HANDLES H01 SPINDLE & SCREWS - WOOD PANELS, SINGLE HANDLE

## Standard single handle kits

Handle item#	Spindle length S	Screw length L	Opening	Panel thickness PT		Cover offset CO
				Min	Max	
TPL-002-C-* or TPL-024-C-*	20.5	25	Outward	Any		4.0
TPL-002-G-* or TPL-024-G-*	29.5	35				
TPL-002-K-* or TPL-024-K-*	34.5	40	Inward	53.0	58.0	12.0
TPL-002-M-* or TPL-024-M-*	44.5	50		58.0	63.0	
TPL-002-O-* or TPL-024-O-*	54.5	60		63.0	73.0	
TPL-002-Q-* or TPL-024-Q-*	64.5	100		73.0	83.0	
TPL-002-R-* or TPL-024-R-*	69.5			83.0	93.0	
			88.0	98.0		



**Notes:**

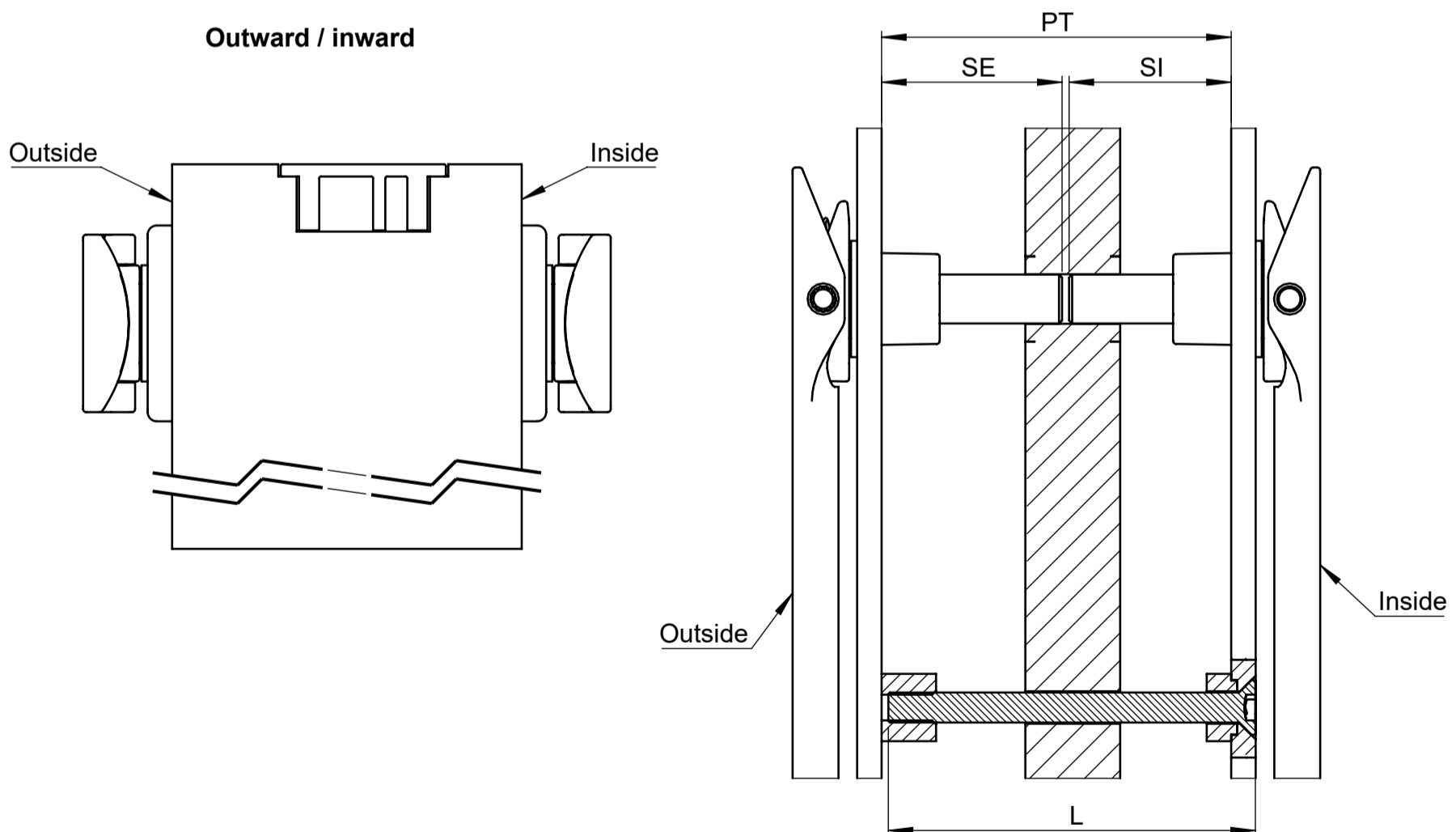
- For keyed handles, refer to the LOCK CYLINDER section in WOOD PANEL TECHNICAL DOCUMENT for the selection of cylinder.
- For inward opening, Use the formulas in the table below to calculate the length in the event that the spindle and screws need to be cut.

Spindle length		Screw length	
$S_{min} = PT - CO - 16.0mm$	$S_{max} = PT - CO - 7.0mm$	$L_{min} = PT - CO - 11.0mm$	$L_{max} = PT - CO - 3.0mm$

# STAINLESS STEEL HANDLES H01 SPINDLE & SCREWS - WOOD PANELS, DOUBLE HANDLE

## Standard double handle kits

Handle item No.	Spindle length internal SI	Spindle length external SE	Screw length L	Opening	Panel thickness PT		Cover offset CO
					Min	Max	
TPL-001-JG-*	23.5	29.5	60	Outward	53.0	58.0	12.0
TPL-001-JK-*		34.5			58.0	63.0	
TPL-001-JL-*		39.5			63.0	68.0	
TPL-001-JM-*		44.5			68.0	73.0	
TPL-001-JN-*		49.5			73.0	78.0	
TPL-001-JO-*		54.5			78.0	83.0	
TPL-001-JP-*		59.5			83.0	88.0	
TPL-001-JQ-*		64.5			88.0	93.0	
TPL-001-JR-*		69.5			93.0	98.0	
TPL-001-GJ-*		29.5			23.5	100	
TPL-001-KJ-*	34.5	58.0	63.0				
TPL-001-LJ-*	39.5	63.0	68.0				
TPL-001-MJ-*	44.5	68.0	73.0				
TPL-001-NJ-*	49.5	73.0	78.0				
TPL-001-OJ-*	54.5	78.0	83.0				
TPL-001-PJ-*	59.5	83.0	88.0				
TPL-001-QJ-*	64.5	88.0	93.0				
TPL-001-RJ-*	69.5	93.0	98.0				



### Notes:

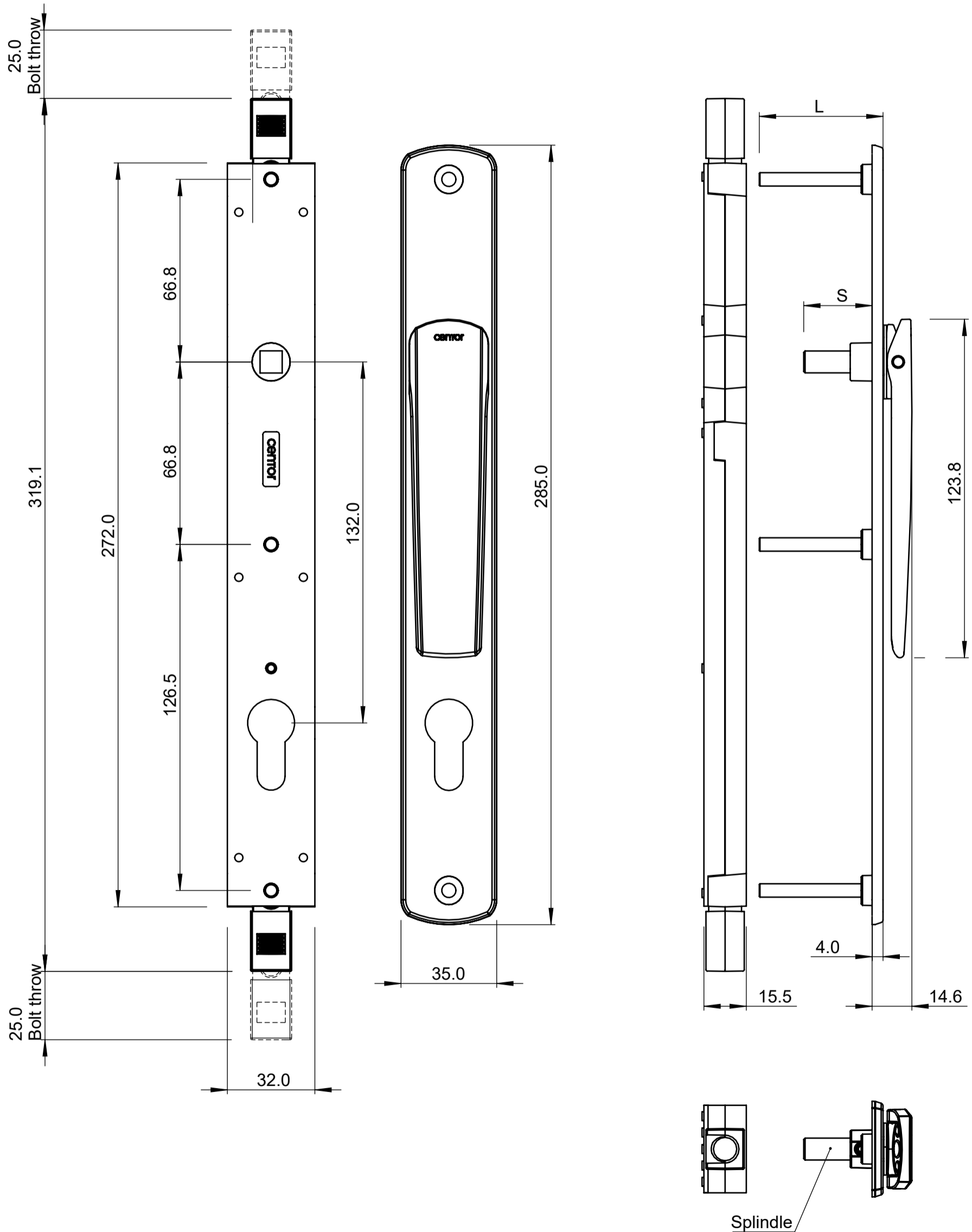
1. Refer to the LOCK CYLINDER section in WOOD PANEL TECHNICAL DOCUMENT for the selection of cylinders.
2. For inward opening, the 100mm long screws need to be cut. Use the formulas in the table below to calculate the length.

Screw length	
$L_{min} = PT$	$L_{max} = PT + 4.0mm$



ZINC DIECAST HANDLES H02

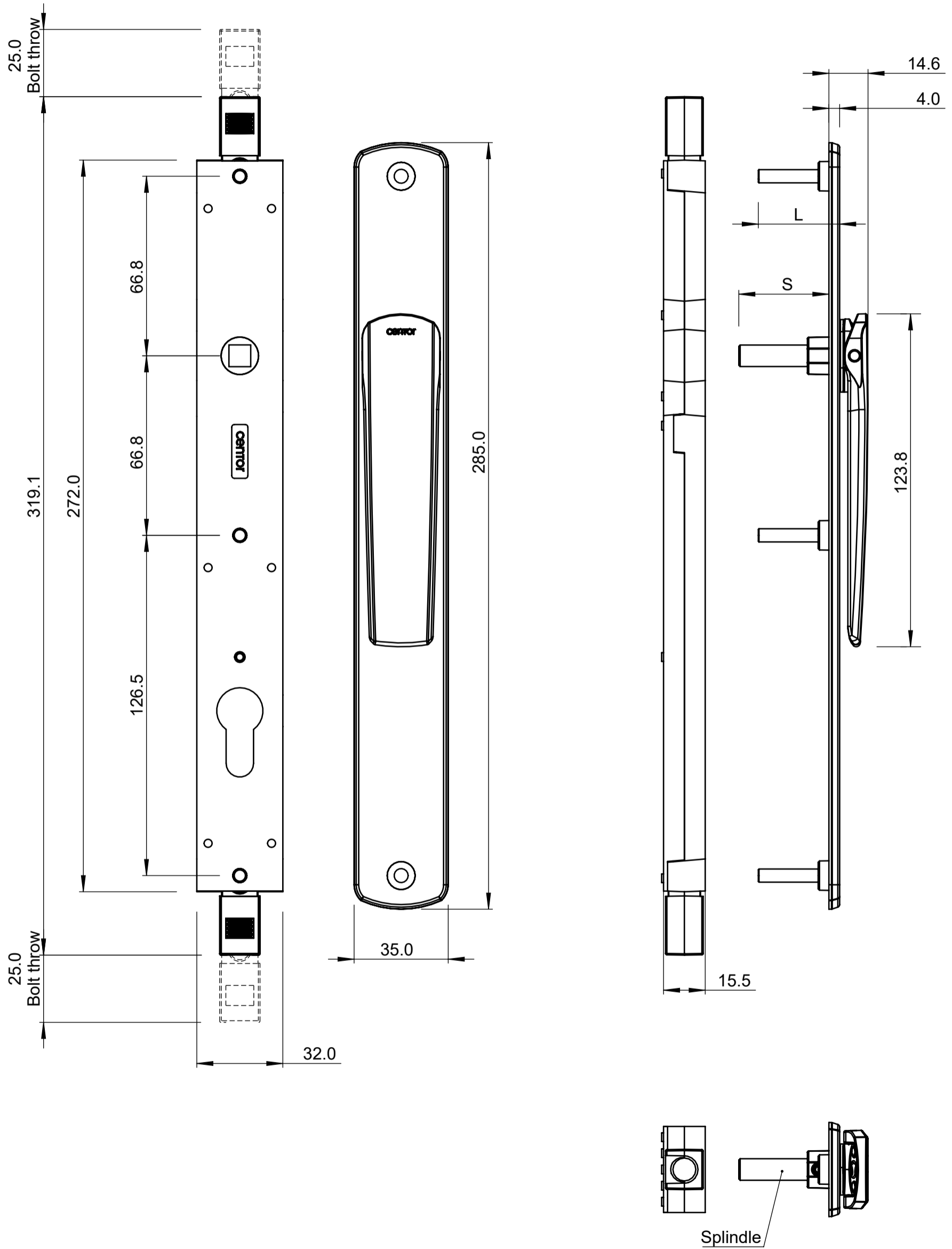
PRODUCT DETAIL - SINGLE HANDLE, KEYED, LONG



Notes:  
Interchangeable spindles and mounting screws with different lengths are supplied in the handle kit.

ZINC DIECAST HANDLES H02

PRODUCT DETAIL - SINGLE HANDLE, NON-KEYED, LONG

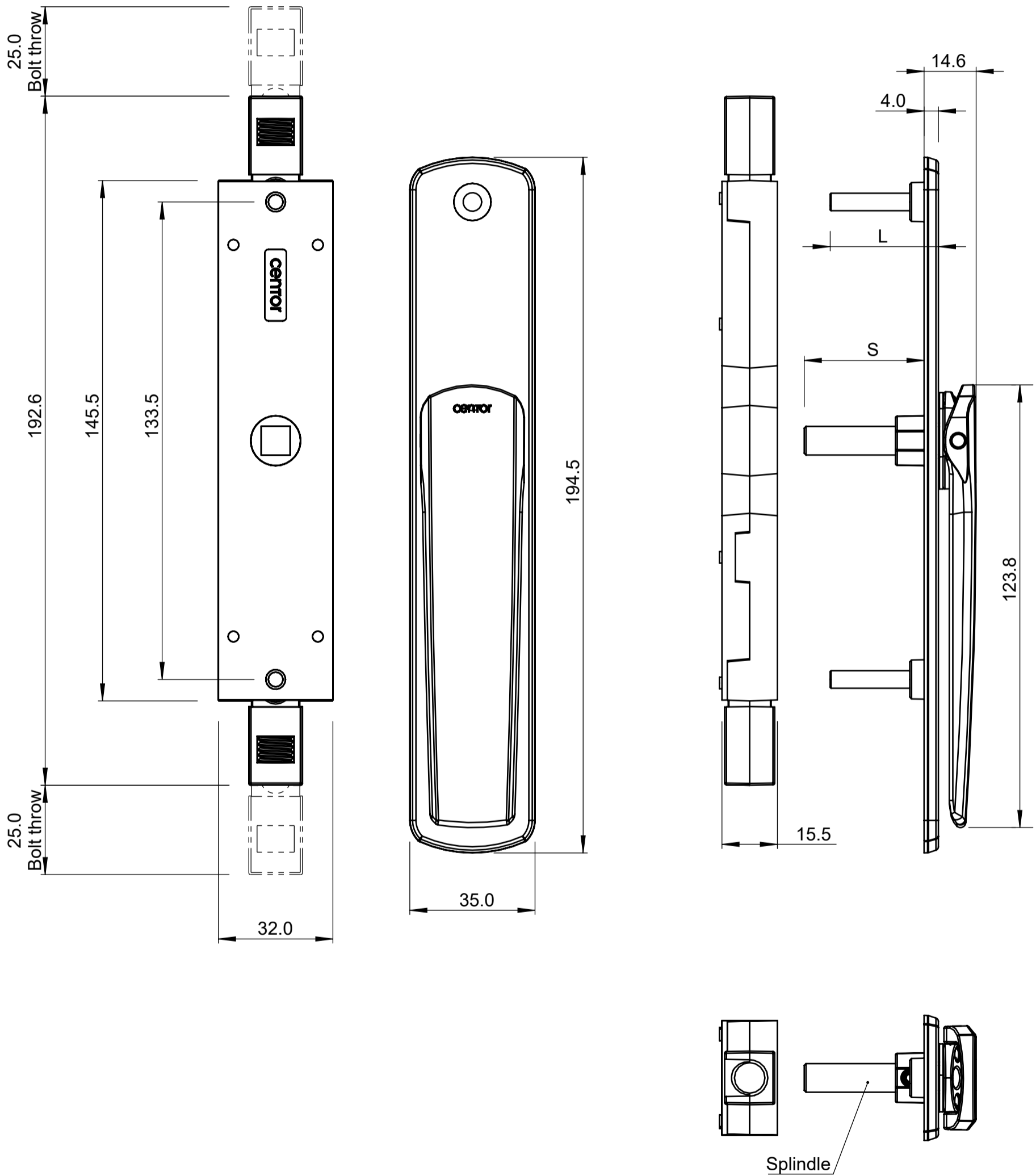


Notes:

Interchangeable spindles and mounting screws with different lengths are supplied in the handle kit.

ZINC DIECAST HANDLES H02

PRODUCT DETAIL - SINGLE HANDLE, NON-KEYED, SHORT



Notes:

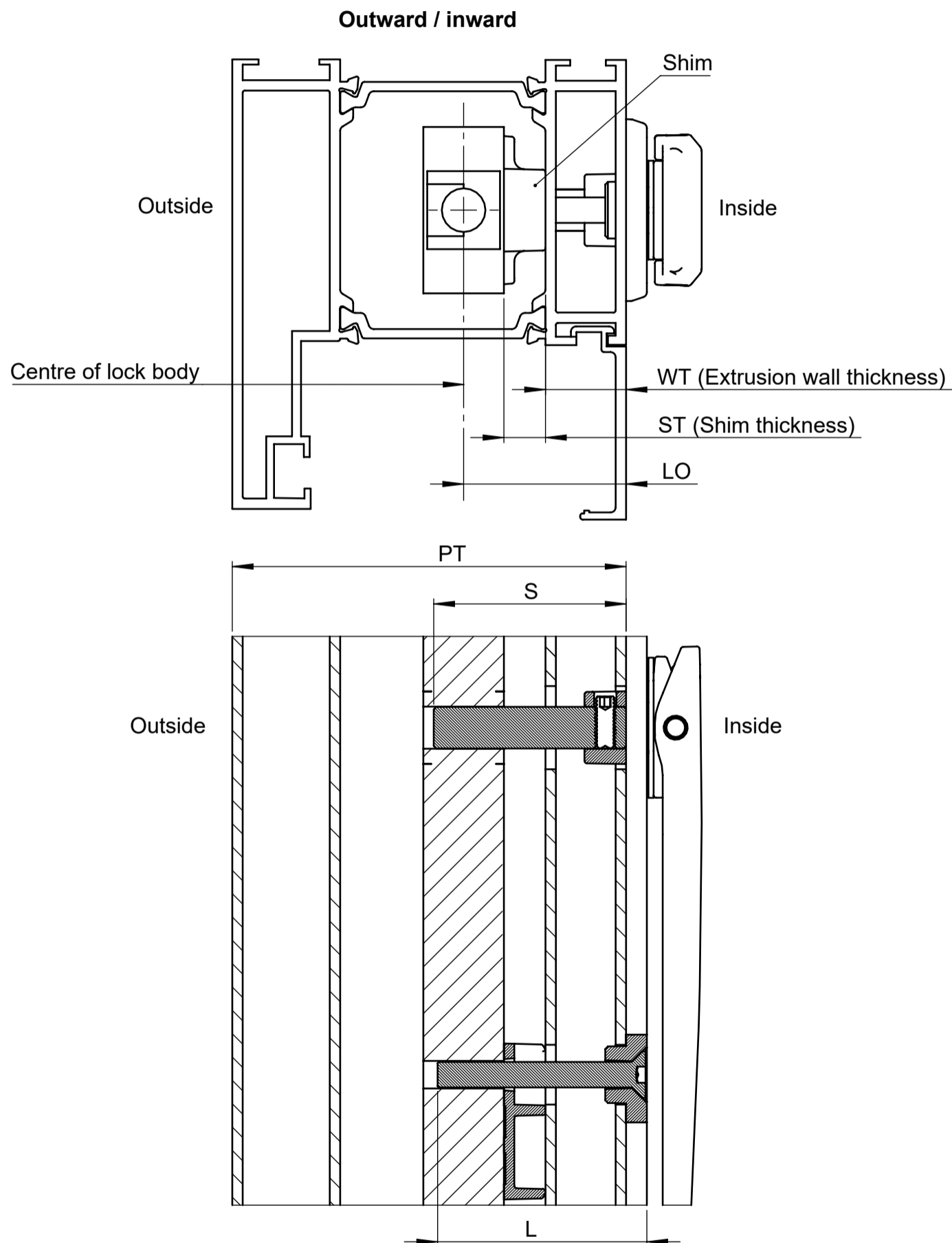
Interchangeable spindles and mounting screws with different lengths are supplied in the handle kit.

# ZINC DIECAST HANDLES H02

## SPINDLE & SCREWS - HOLLOW PANELS, SINGLE HANDLES

### Standard single handle kits

Handle item No.	Spindle length S	Screw length L	Opening	Panel thickness PT	Lock body offset LO	
					Min.	Max.
TPL-055-01-* & TPL-056-01-*	25.0	30	Any	Any size	16.0	27.0
TPL-057-01-*	37.0	35				32.0



### Notes:

1. The lock body offset is the distance from the inside face of the panel to the centre of the lock body.
2. For keyed handles, the lock cylinder may protrude depends on the lock body offset. Refer to the LOCK CYLINDER section in the HOLLOW PANEL TECHNICAL DOCUMENT for detail.
3. For lock body offset not covered in the above table, purchase the spindle kit in the appropriate finish (TPL-058-100-\*). Cut the spindle and screws in accordance to the formulas in the table below.
4. The spindle and screws can extend through the lock body provided they don't interfere with the stile.

Lock body offset	Minimum spindle length	Minimum screw length
$LO = WT + ST + 7.75\text{mm}$	$S_{\text{min}} = LO - 2.0\text{mm}$	$L_{\text{min}} = LO - 1.0\text{mm}$

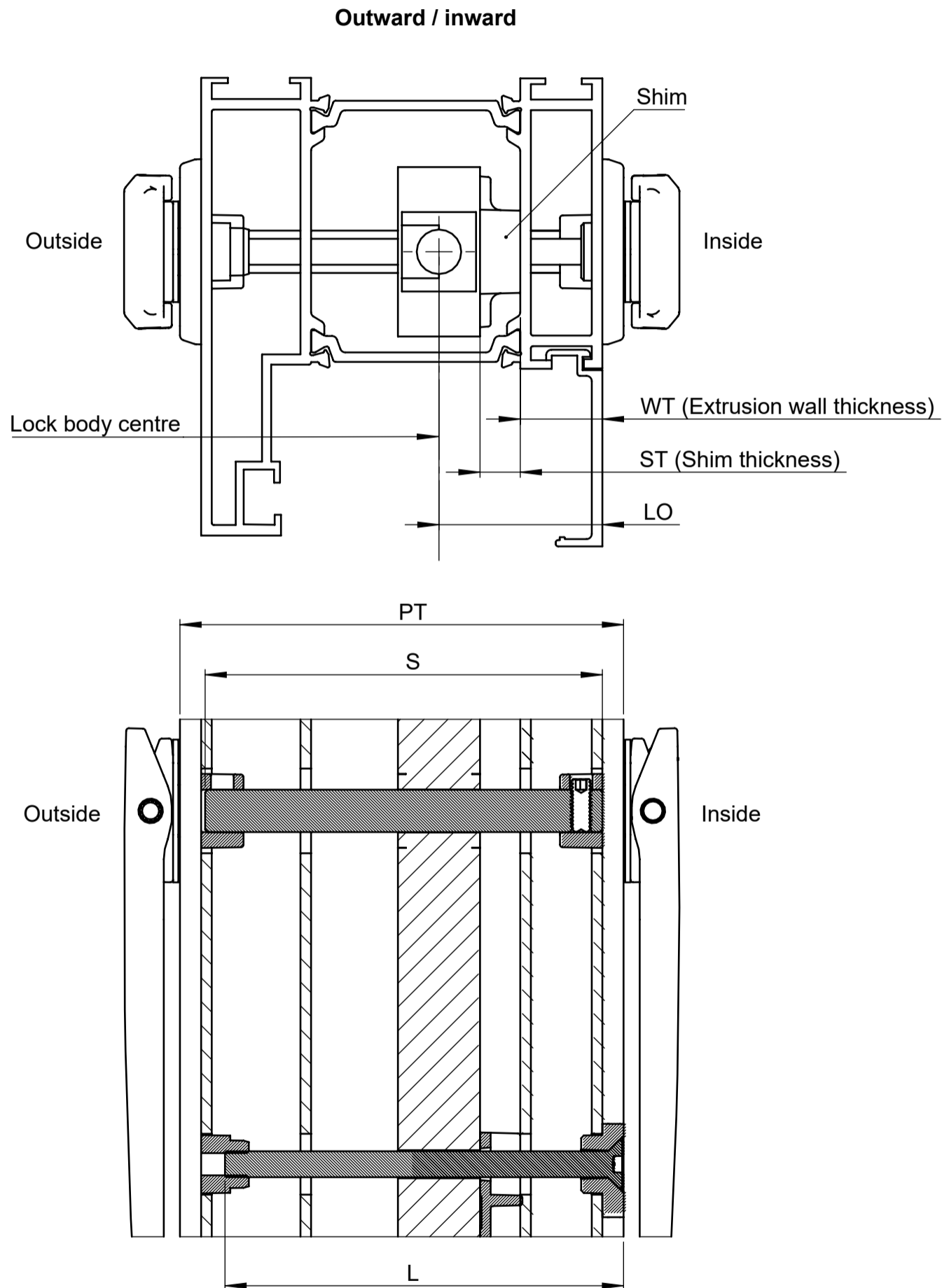


# ZINC DIECAST HANDLES H02

## SPINDLE & SCREWS - HOLLOW PANELS, DOUBLE HANDLES

### Standard double handle kit

Handle item#	Spindle length S	Screw length L	Opening	Panel thickness PT	Lock body offset LO	
					Min	Max
TPL-054-01-*	100.0	100	Any	Up to 100	16.0	83.0



**Notes:**

1. The lock body offset is the distance from the inside face of the panel to the centre of the lock body.
2. Lock cylinder may protrude depends on the lock body offset and panel thickness. Refer to the LOCK CYLINDER section in the HOLLOW PANEL TECHNICAL DOCUMENT for detail.
3. Spindle and mounting screws can be cut to suit the panel thickness in accordance to the formulas in the table below.

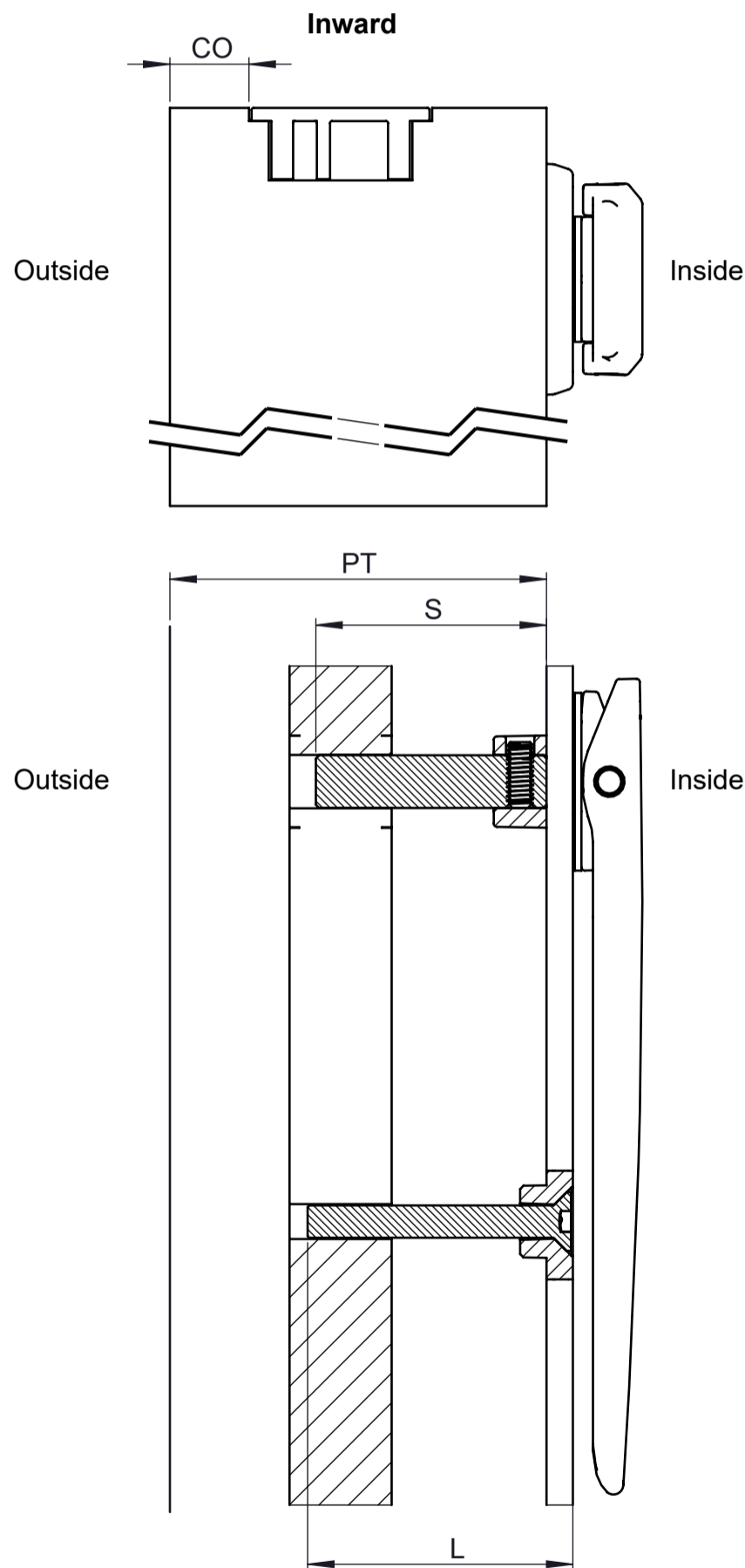
Lock body offset	Spindle length		Screw length	
$LO = WT + ST + 7.75\text{mm}$	$S_{\text{min}} = PT - 4.0\text{mm}$	$S_{\text{max}} = PT - 1.0\text{mm}$	$L_{\text{min}} = PT$	$L_{\text{max}} = PT + 4.0\text{mm}$

# ZINC DIECAST HANDLES H02

## SPINDLE & SCREWS - WOOD PANELS, SINGLE HANDLES

### Standard single handle kits

Handle item No.	Spindle length S	Screw length L	Opening	Panel thickness PT	Cover offset CO
TPL-055-01-* & TPL-056-01-*	25.0	30	Outward	Any	4.0
	37.0	35			12.0
TPL-057-01-*	25.0	30	Inward	36.2 to 45.1	4.0
	37.0	35		47.2 to 50.1	
	25.0	30		44.2 to 53.1	12.0
	37.0	35		55.2 to 58.1	



**Notes:**

- For keyed handles, refer to the LOCK CYLINDER section in WOOD PANEL TECHNICAL DOCUMENT for the selection.
- For inward opening with panel thicknesses not covered in the table above, purchase the spindle kit in the appropriate finish (TPL-058-100-\*). Cut the spindle and the screws in accordance to the formulas in the table below.

Spindle length		Screw length	
$S_{min} = PT - CO - 16.0mm$	$S_{max} = PT - CO - 7.0mm$	$L_{min} = PT - CO - 11.0mm$	$L_{max} = PT - CO - 3.0mm$

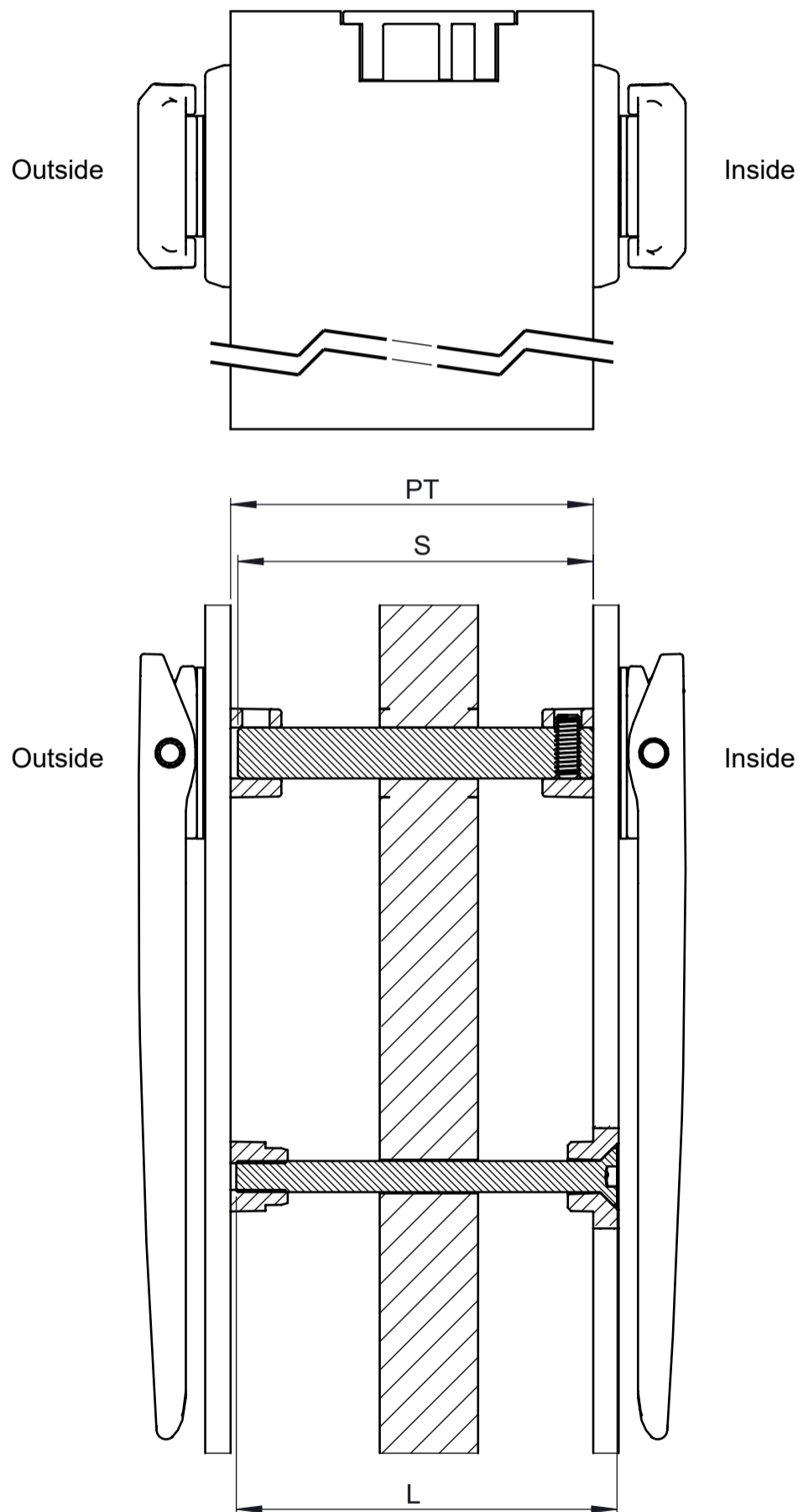
ZINC DIECAST HANDLES H02

SPINDLE & SCREWS - WOOD PANELS, DOUBLE HANDLES

Standard double handle kit

Handle item No.	Spindle length S	Screw length L	Opening	Panel thickness PT	Cover offset CO
TPL-054-01-*	100.0	100	Any	Up to 100	4.0
					12.0

Outward / Inward



Notes:

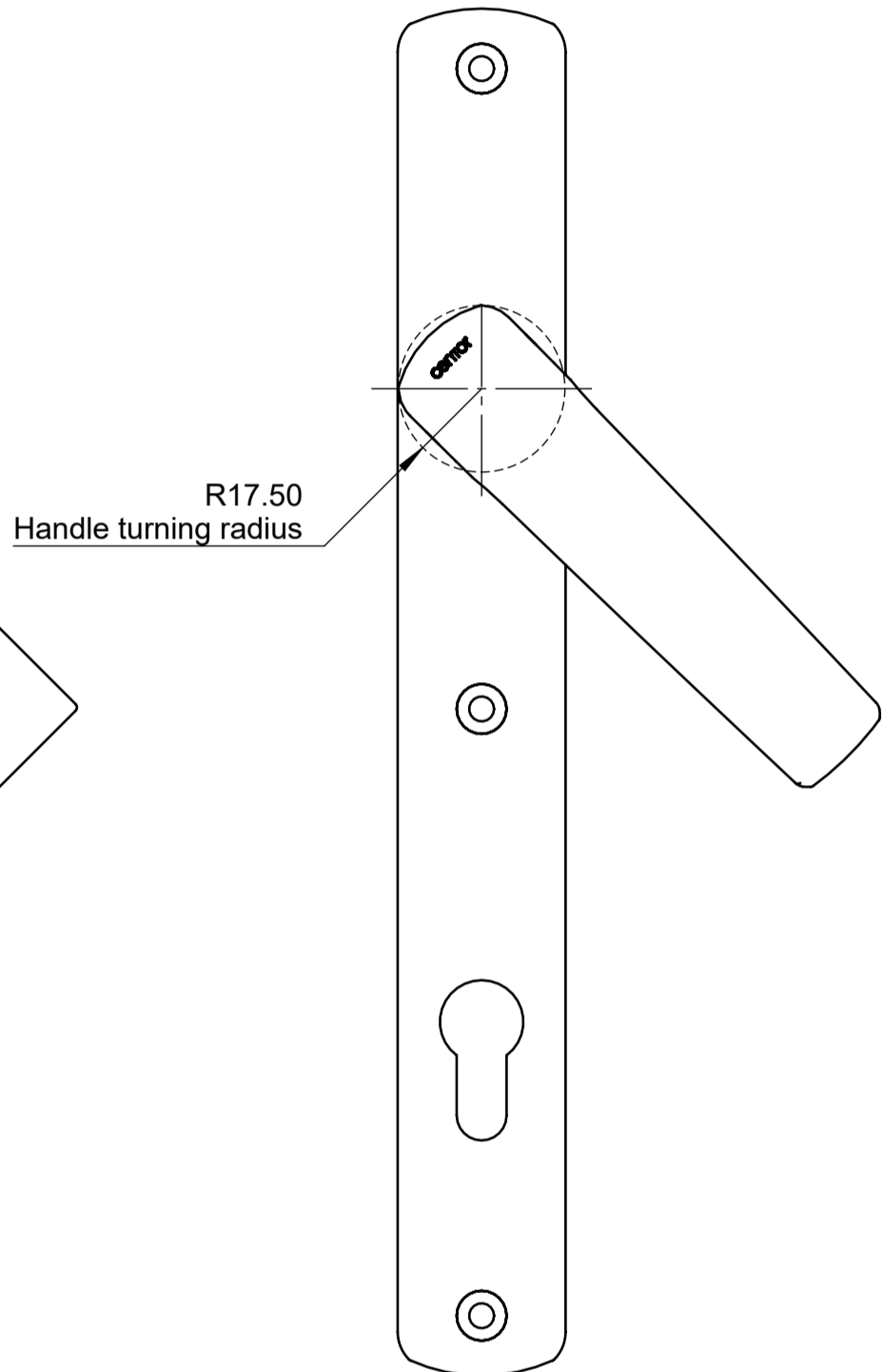
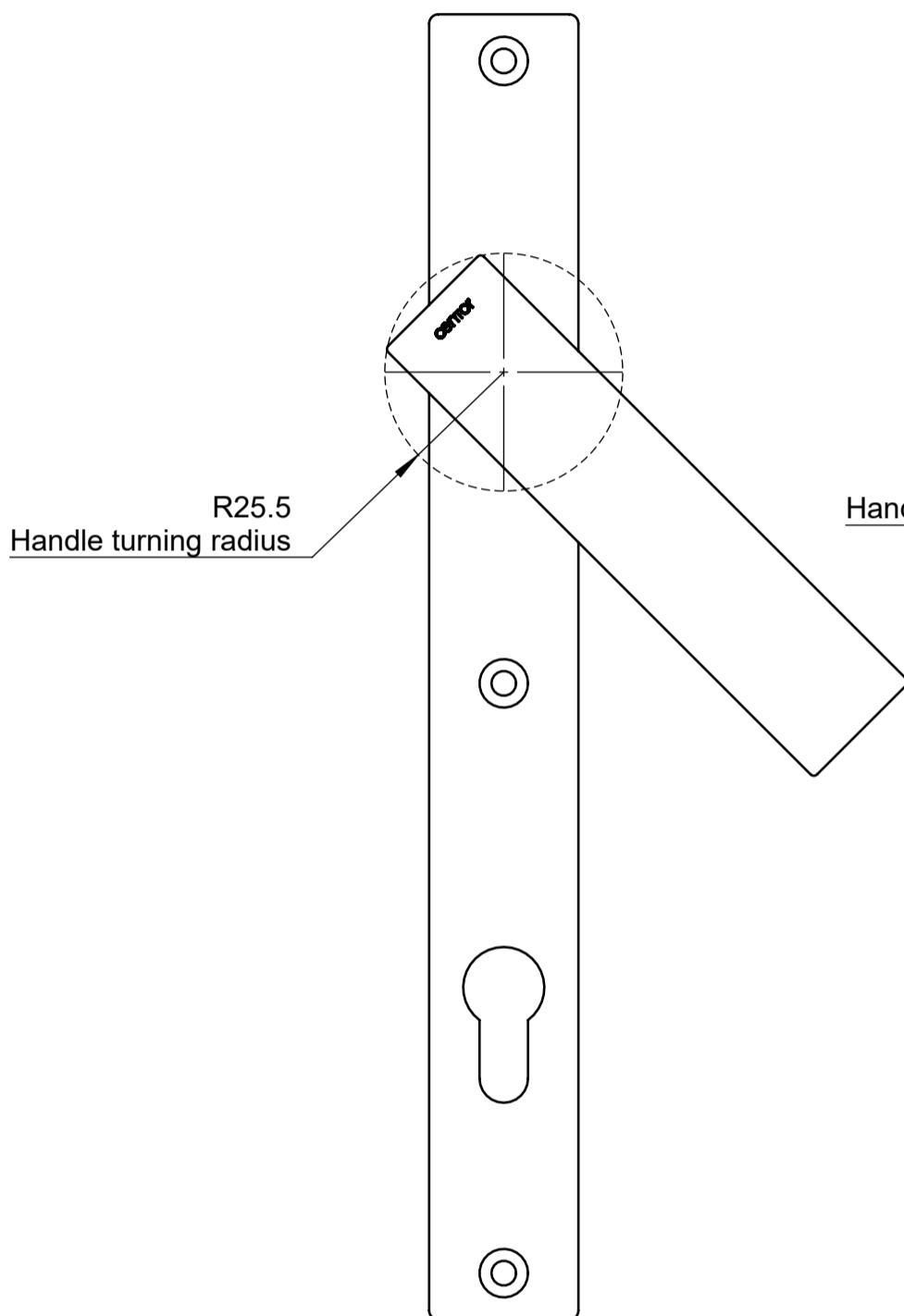
1. Refer to the LOCK CYLINDER section in WOOD PANEL TECHNICAL DOCUMENT for the selection.
2. Cut the spindle and the screws in accordance with the formulas in below table to suit panel up to 100mm thick.

Spindle length		Screw length	
$S_{min} = PT - 4.0mm$	$S_{max} = PT - 1.0mm$	$L_{min} = PT$	$L_{max} = PT + 4.0mm$

# HANDLE BACKSET DETAIL

Stainless steel handle

Zinc diecast handle



Notes:

Keyed handle shown. Same requirements apply to non-keyed version.

## Centor UK Ltd

Birmingham  
+44 (0) 121 701 2500  
mail.uk@centor.com  
centor.com

## Centor Europe

Stryków  
+48 42 206 8810  
mail.ce@centor.com  
centor.com