

TwinPoint Gen2
HOLLOW PANELS



Folding door lock with internal and external access

centor®

File download information	3
<hr/>	
Product details	
Exploded view	4 - 7
Assembly detail	8
Lock cylinder	9 - 10
Bolts	11 - 13
Shim	14 - 15
Bolt guide	16
<hr/>	
Machining details	17 - 20
<hr/>	
Lock handing definition	21
<hr/>	
Instructions	
Formulas and limits	22 - 23
Assembly	24 - 25

Download options

Centor's brochures, technical documents and drawings can be downloaded from:

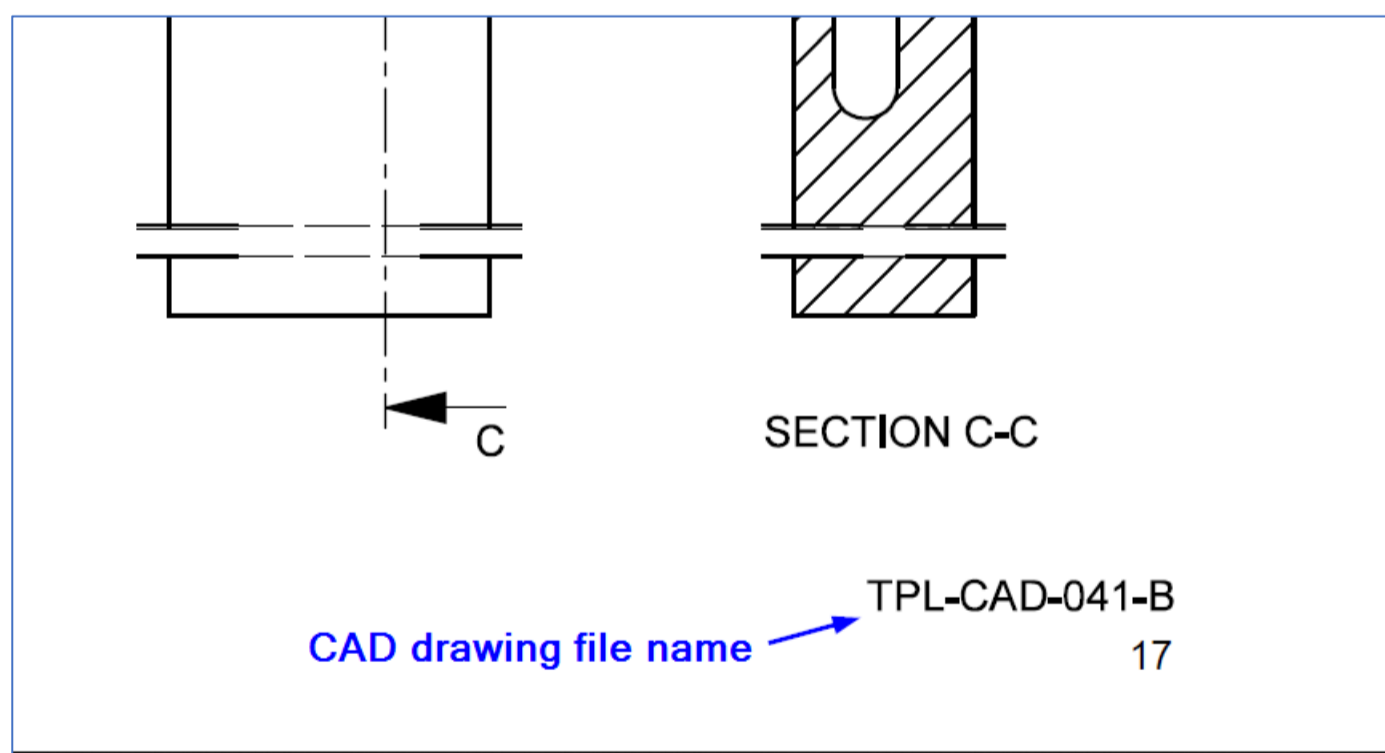
1. Bottom of the TwinPoint Gen2 website page
2. Professional section of Centor's webpage
3. This web link: [English](#) | [French](#) | [German](#) | [Greek](#) | [Italian](#) | [Polish](#) | [Spanish](#)

Downloads	
TwinPoint Gen2 Brochure	pdf
TwinPoint Gen2 Hollow Panels technical document	pdf
TwinPoint Gen2 Wood Panels technical document	pdf
TwinPoint Gen2 Drawings (dwg)	zip
TwinPoint Gen2 Drawings (dxf)	zip

2D CAD drawing download

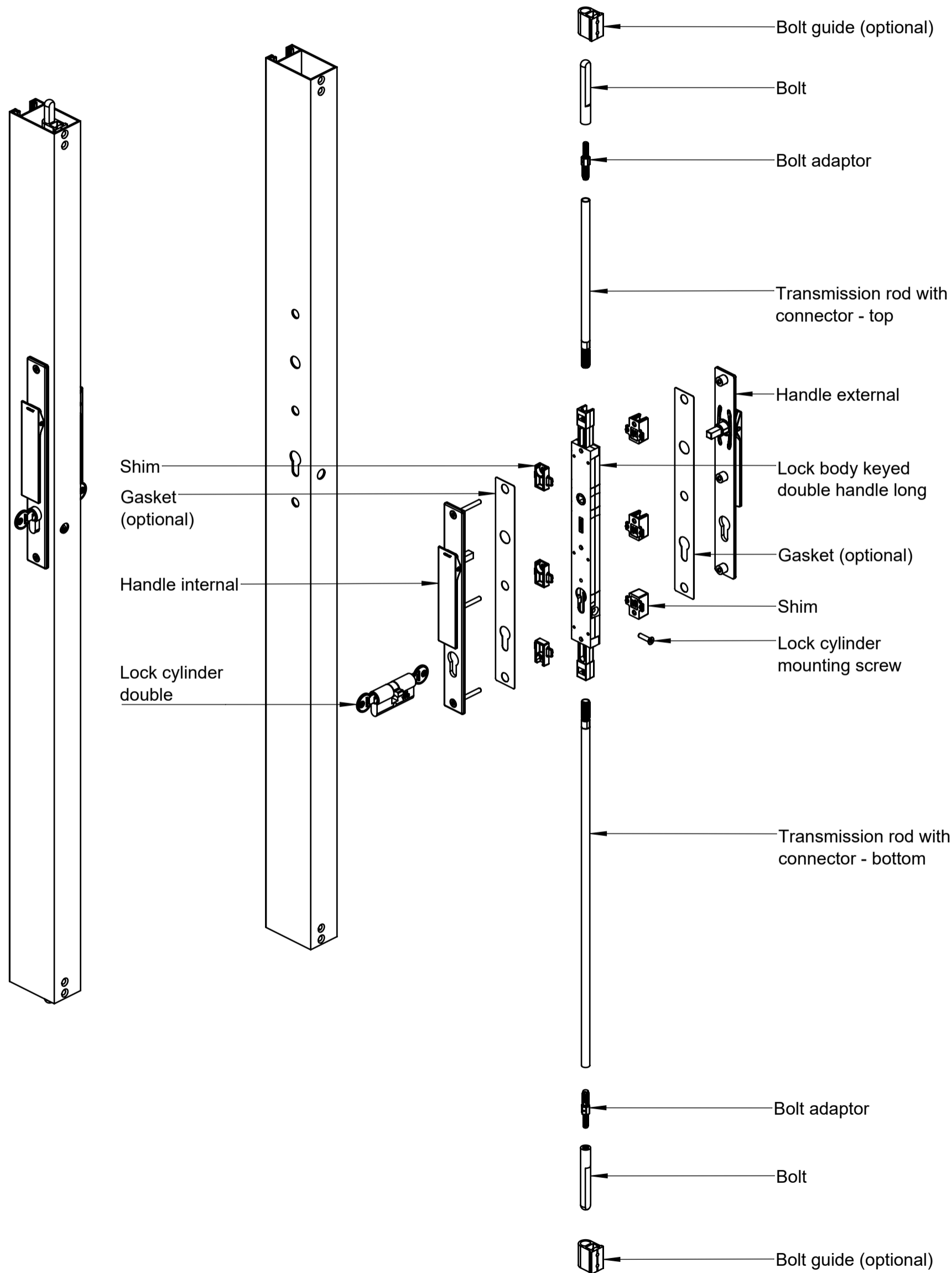
The drawings download provides a folder that contains all the drawings.

1. There are two folders. One for dwg and one for dxf.
2. Use the technical documents as an index to select the appropriate drawing. The drawing file name is printed at the bottom right corner of the page.



PRODUCT DETAILS

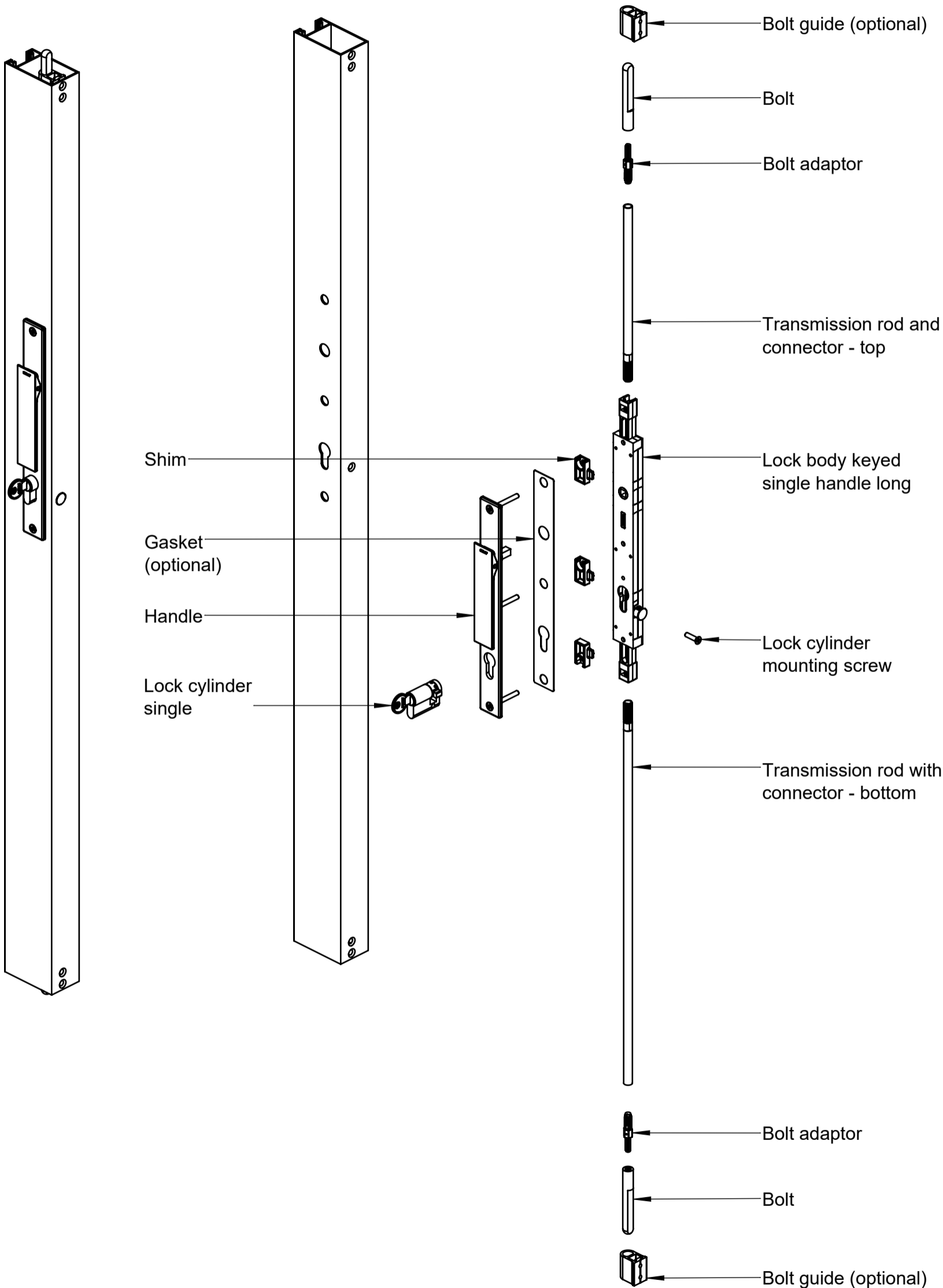
Hollow panel with TwinPoint Gen2 double handle, keyed, long



- Notes:
- 1. Stainless steel double handle, keyed, long shown. Zinc diecast double handle, keyed, long is fitted the same way.
 - 2. Gasket not required for zinc diecast handles.

PRODUCT DETAILS

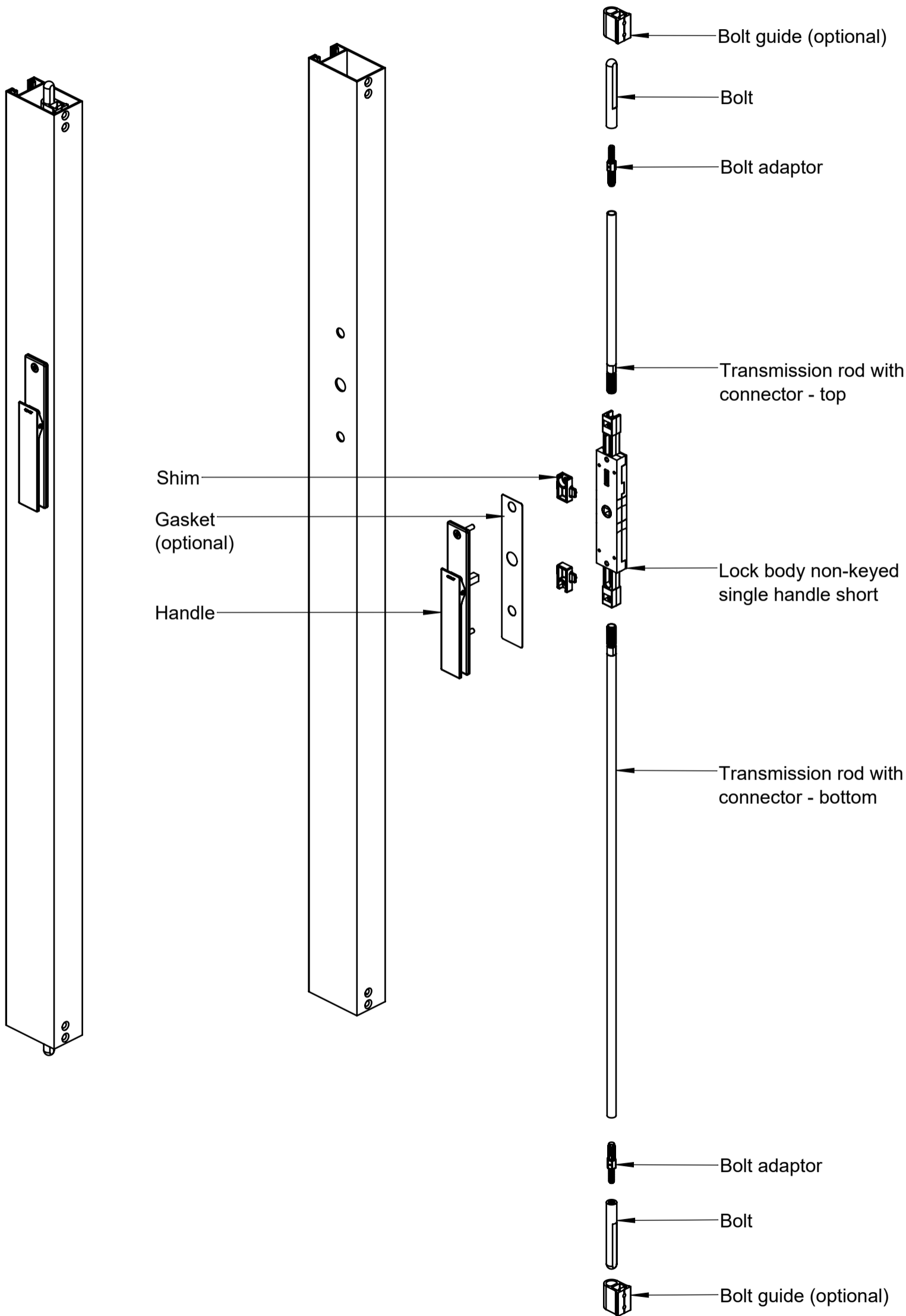
Hollow panels with TwinPoint Gen2 single handle, keyed, long



- Notes:
- 1. Stainless steel single handle, keyed, long shown. Zinc diecast single handle, keyed, long is fitted the same way.
 - 2. Gasket not required for zinc diecast handles

PRODUCT DETAILS

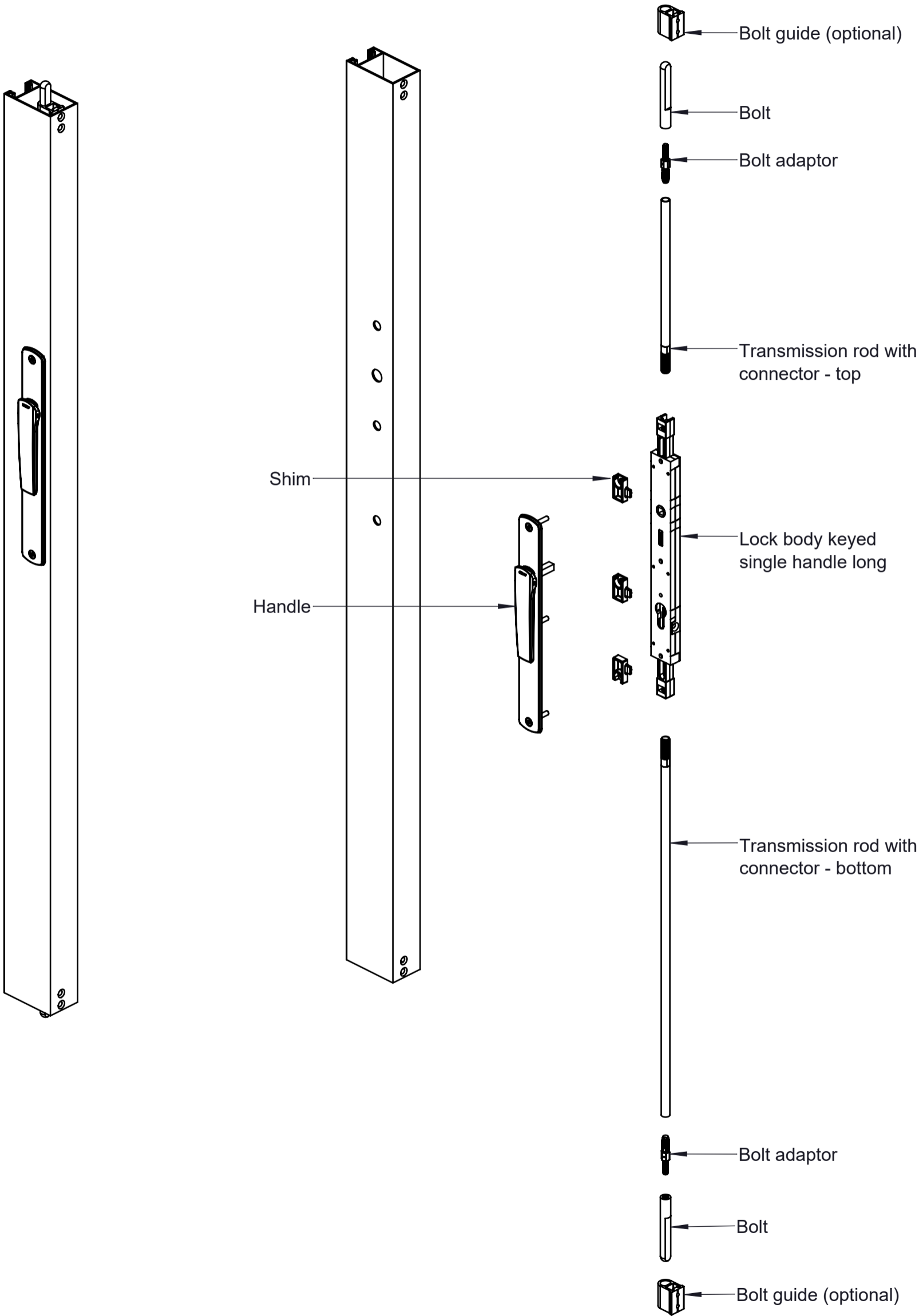
Hollow panels with TwinPoint Gen2 single handle, non-keyed, short



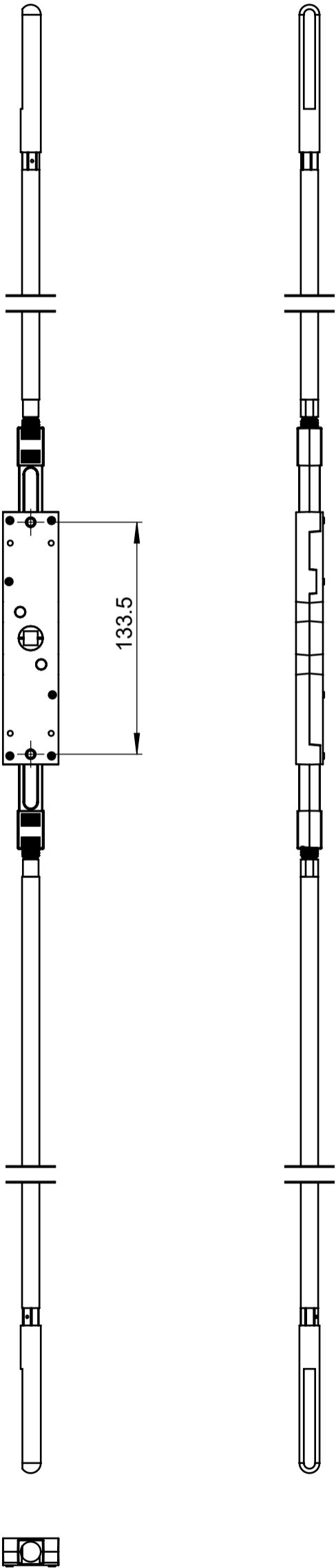
Notes:
1. Stainless steel single handle, non-keyed, short shown. Zinc diecast single handle, non-keyed, short is fitted the same way.
2. Gasket not required for zinc diecast handles.

PRODUCT DETAILS

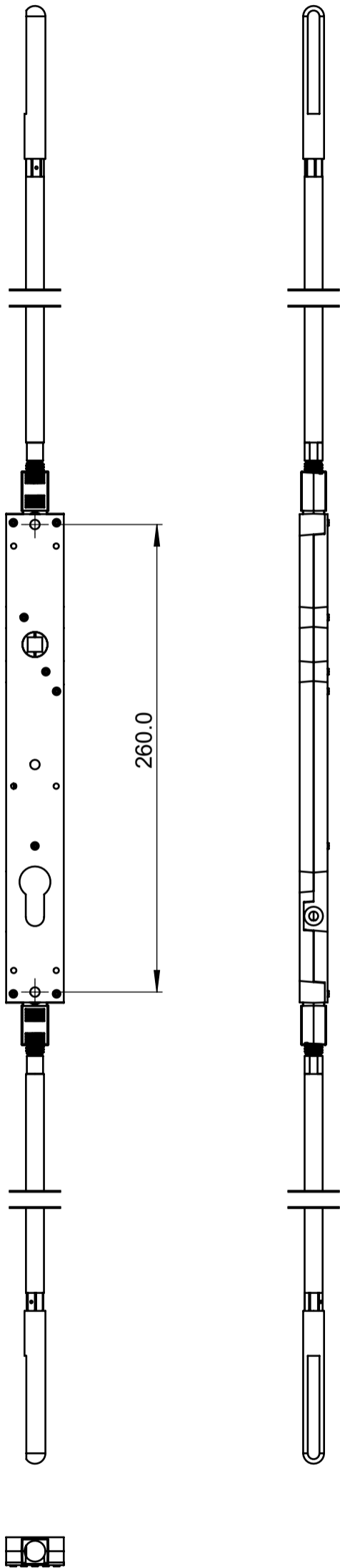
Hollow panel with TwinPoint Gen2 zinc diecast single handle, non-keyed, long



Non-keyed



Keyed

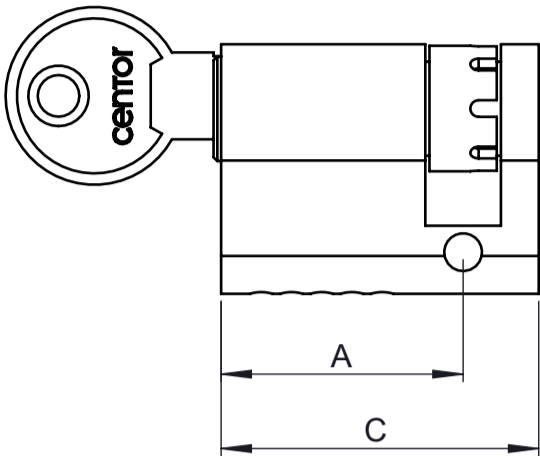


Notes:
Lock shown in extended state.

LOCK CYLINDER DETAILS

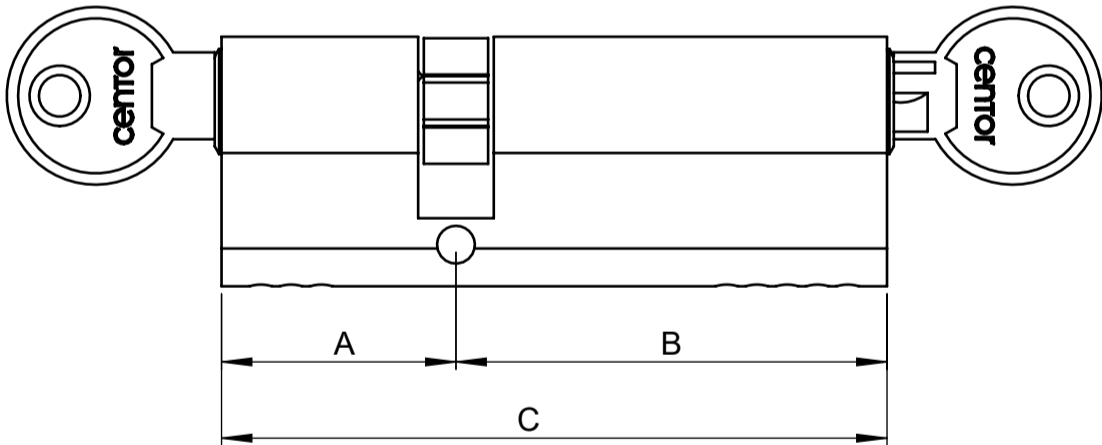
Single cylinder size

Cylinder item number	Dimension (mm)	
	A	C
TPL-022-*	23	33
TPL-023-*	32	42
TPL-064-35-*	35	45
TPL-064-40-*	40	50
TPL-064-45-*	45	55
TPL-064-50-*	50	60
TPL-064-55-*	55	65
TPL-064-60-*	60	70
TPL-064-65-*	65	75
TPL-064-70-*	70	80
TPL-064-75-*	75	85

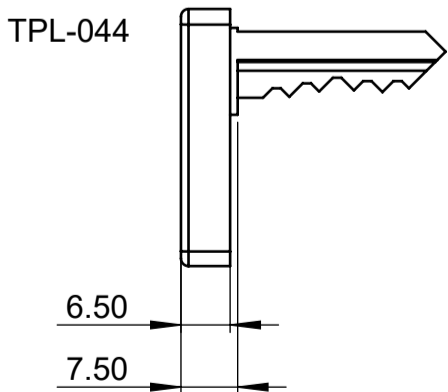


Double cylinder size - 6 pin security

Cylinder item number	Dimension (mm)		
	A	B	C
TPL-050-65-*	30	35	65
TPL-050-70-*	30	40	70
TPL-050-75-*	30	45	75
TPL-050-80-*	30	50	80
TPL-050-85-*	30	55	85
TPL-050-90-*	30	60	90
TPL-050-95-*	30	65	95
TPL-050-100-*	30	70	100
TPL-050-105-*	30	75	105



Key with thumb turn - C4 keyway



TPL-044 is a 5-pin key with a low profile thumb turn. It will not hit and dent the opposite stile if it is left in the lock. It can only be used with cylinders TPL-022-KA-* and TPL-023-KA-*.

- Notes:
- 1. All single cylinders can be rehanded and the rehanding instruction is provided in the cylinder kit.

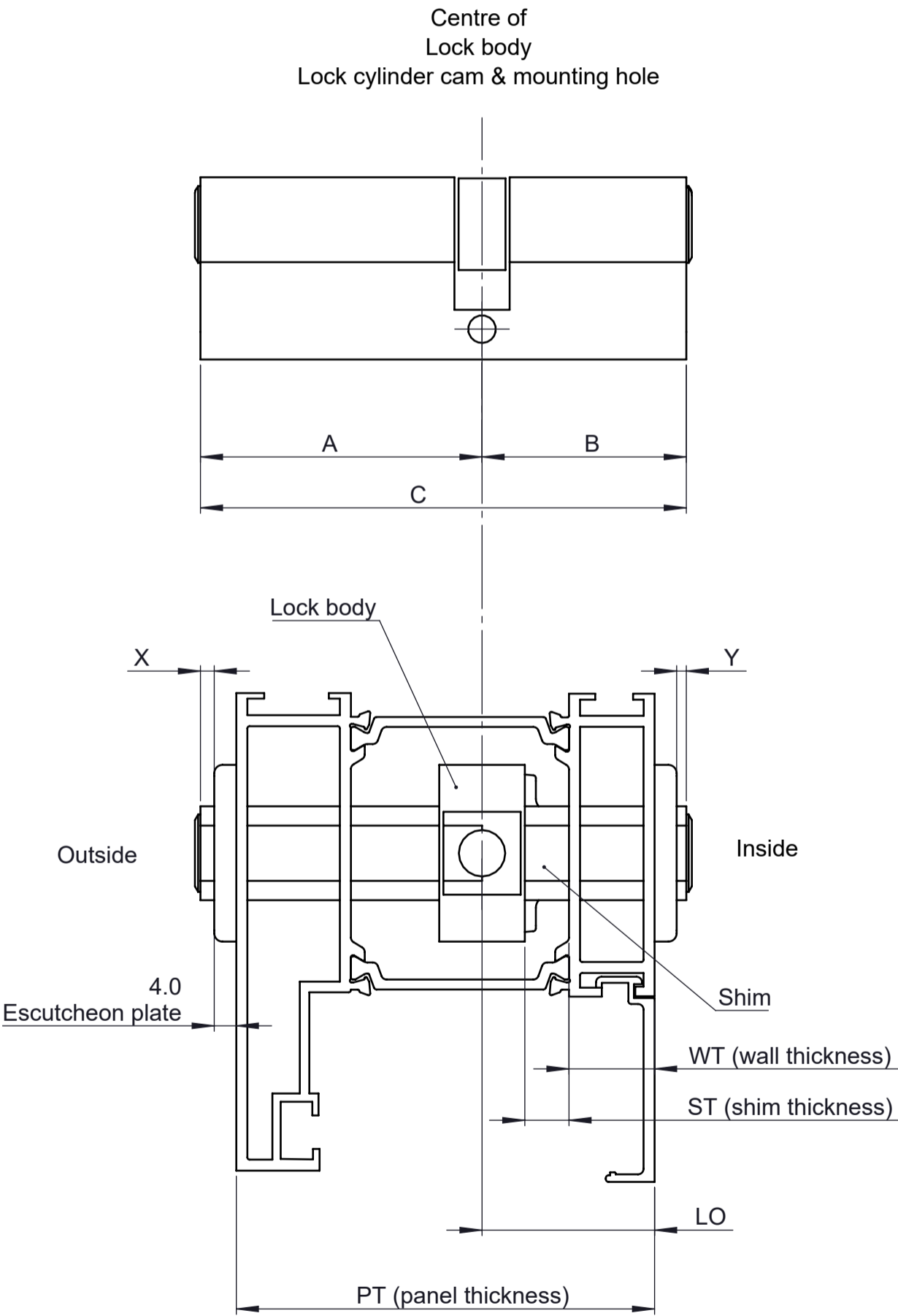
LOCK CYLINDER DETAIL

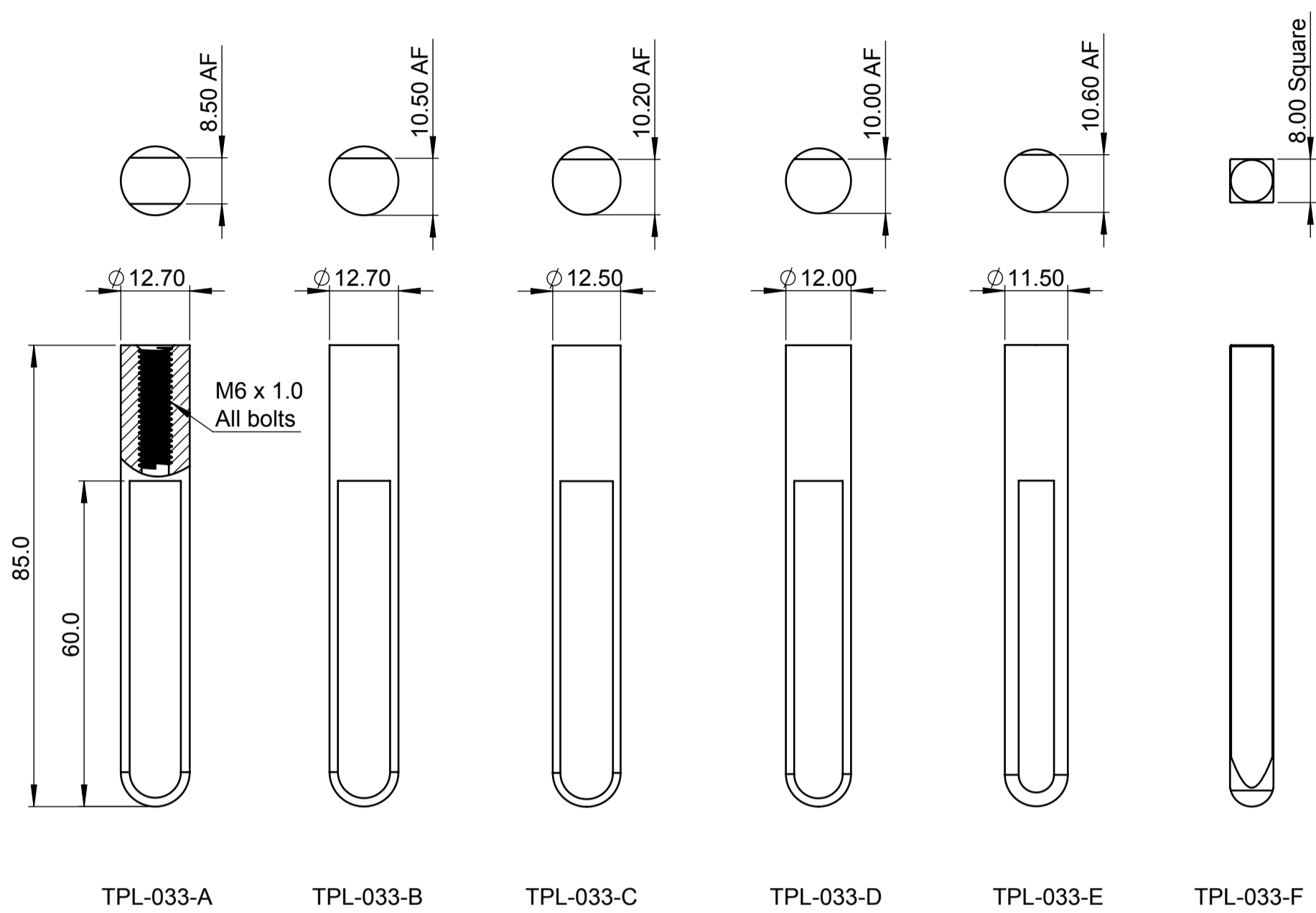
Lock cylinder protrusion

When lock cylinder is fitted in the orientation shown in the graphic, the cylinder protrusion can be calculated in accordance to the following formulas

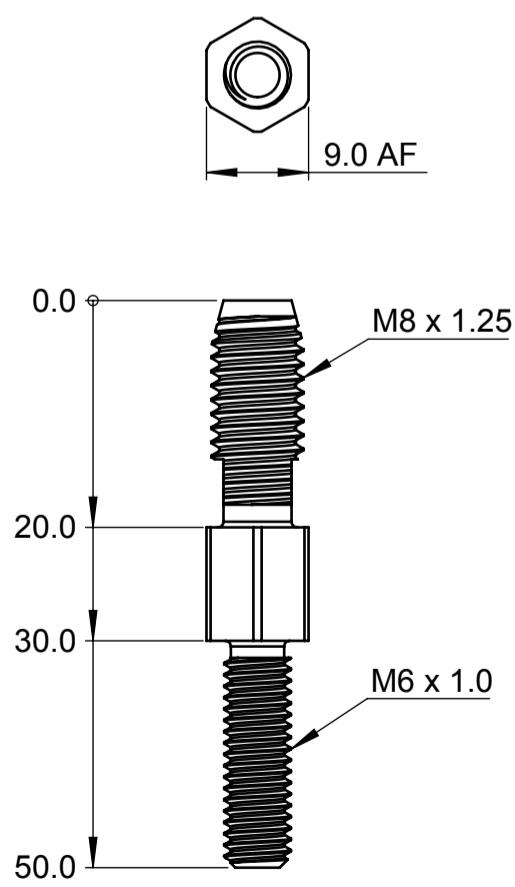
Lock body offset	Cylinder protrusion outside	Cylinder protrusion inside
$LO = WT + ST + 7.75mm$	$X = A - PT + LO - 4.0mm$	$Y = B - LO - 4.0mm$

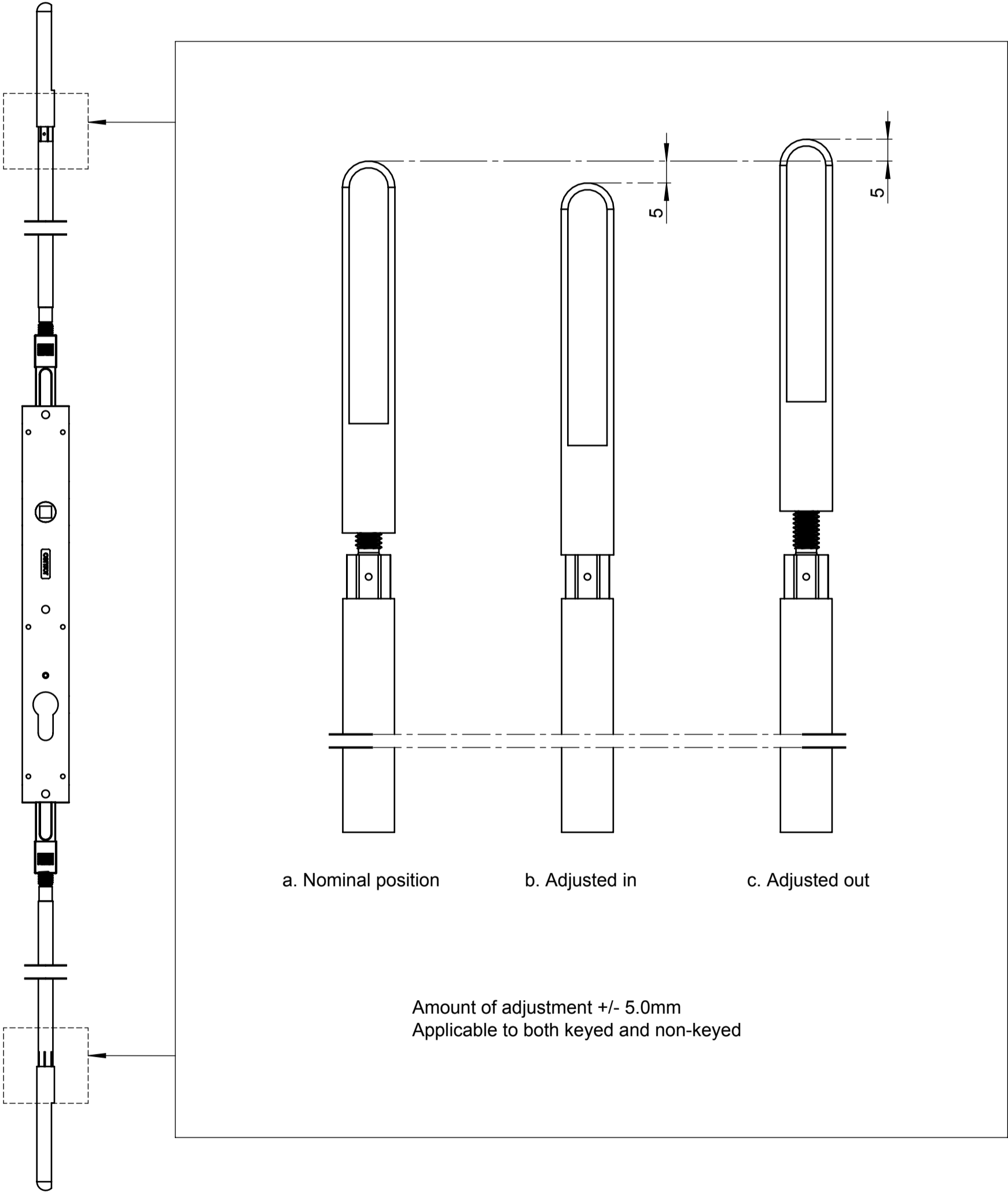
- Notes:
- 1. When thumb turn key TPL-044 is used, the cylinder protrusion should be less than 3mm to prevent the thumb turn from hitting the opposite stile when the doors are opened.
 - 2. Negative value of X or Y means the cylinder will sit below the escutcheon.





The bolt adaptor (supplied with any bolt)

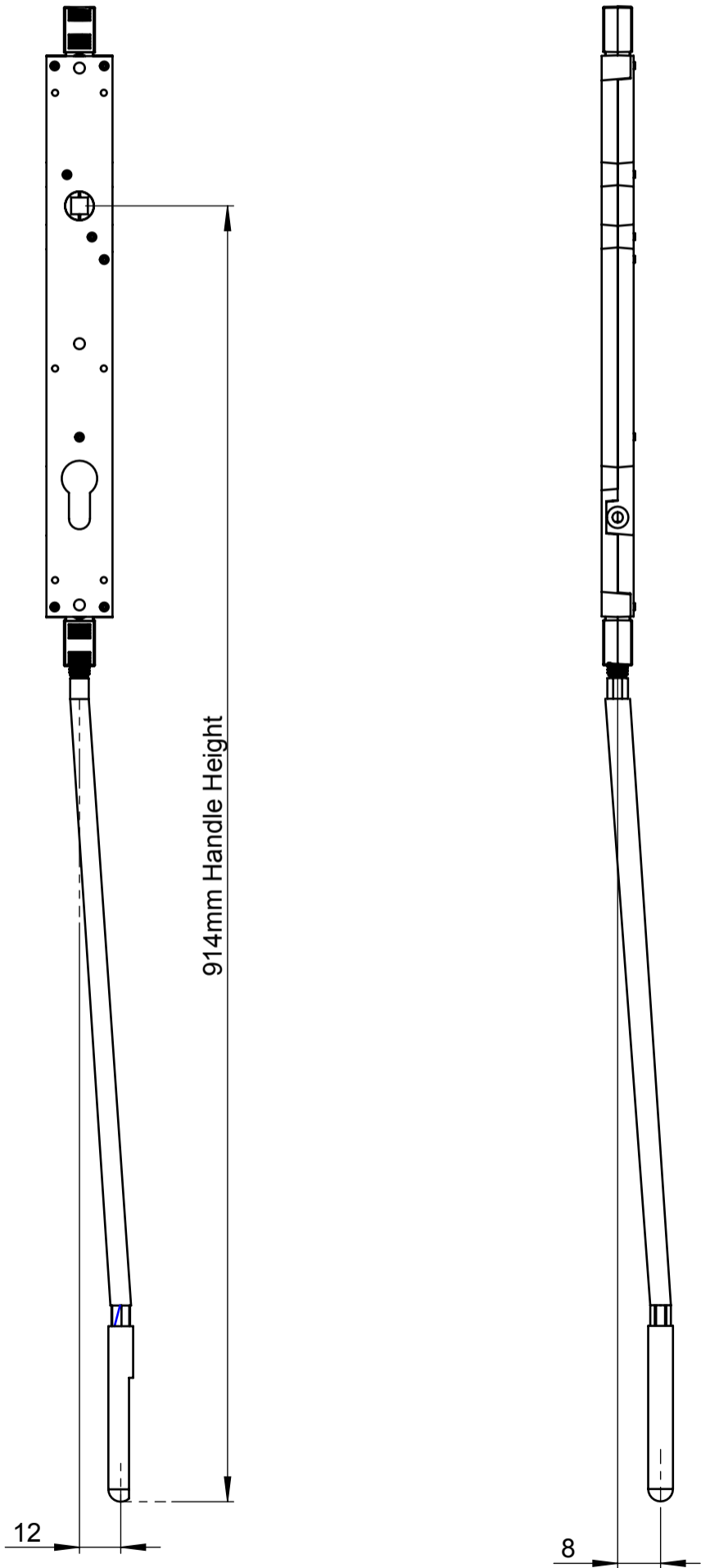




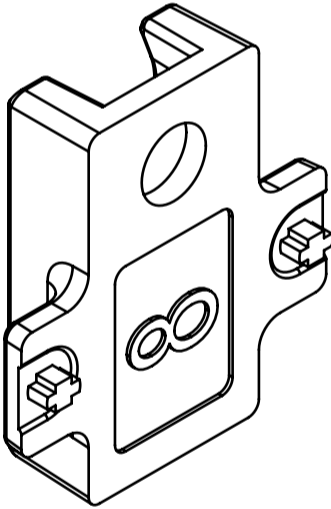
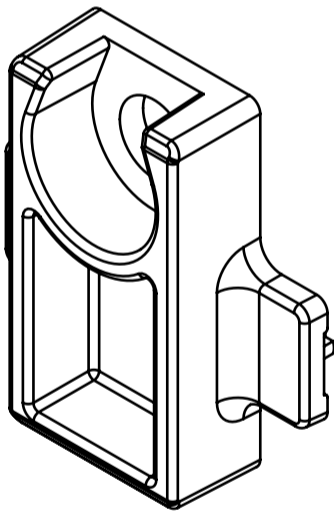
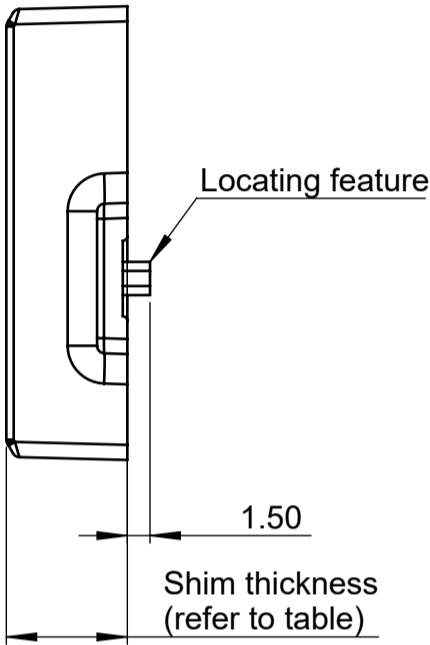
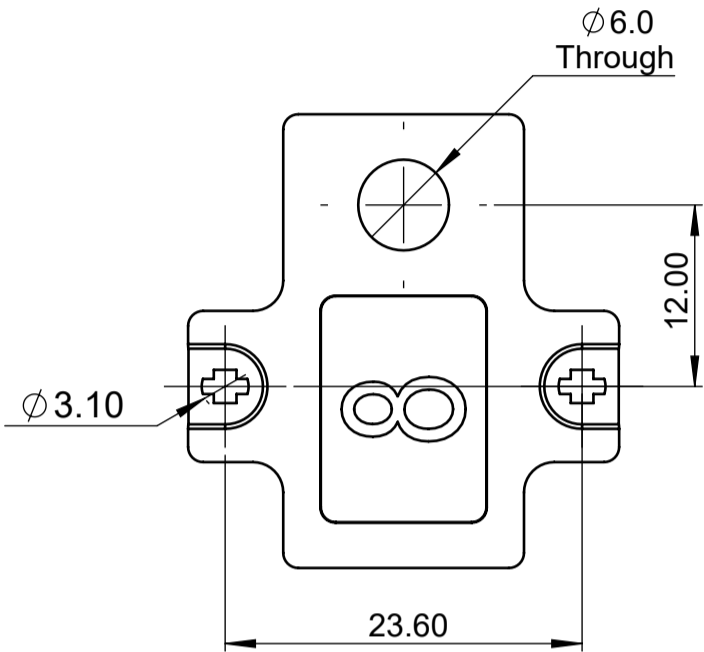
LOCK BODY AND BOLT ALIGNMENT

The lock body and bolt allow certain misalignment when fitted in hollow panel. The amount of misalignment is determined by the length of transmission rod.

As a guide, the following graphics show the allowable misalignment for handle height 914mm.



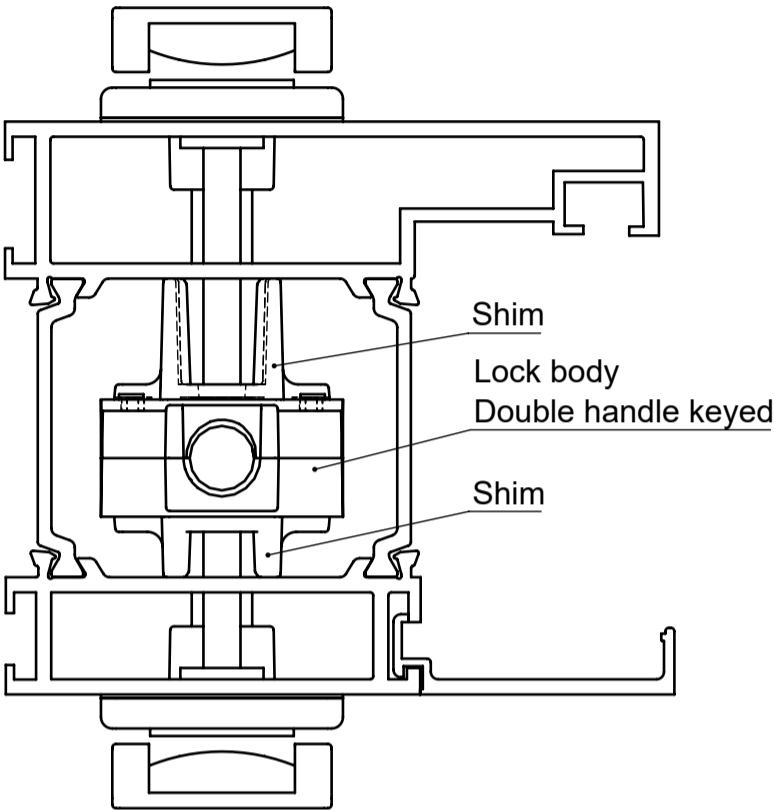
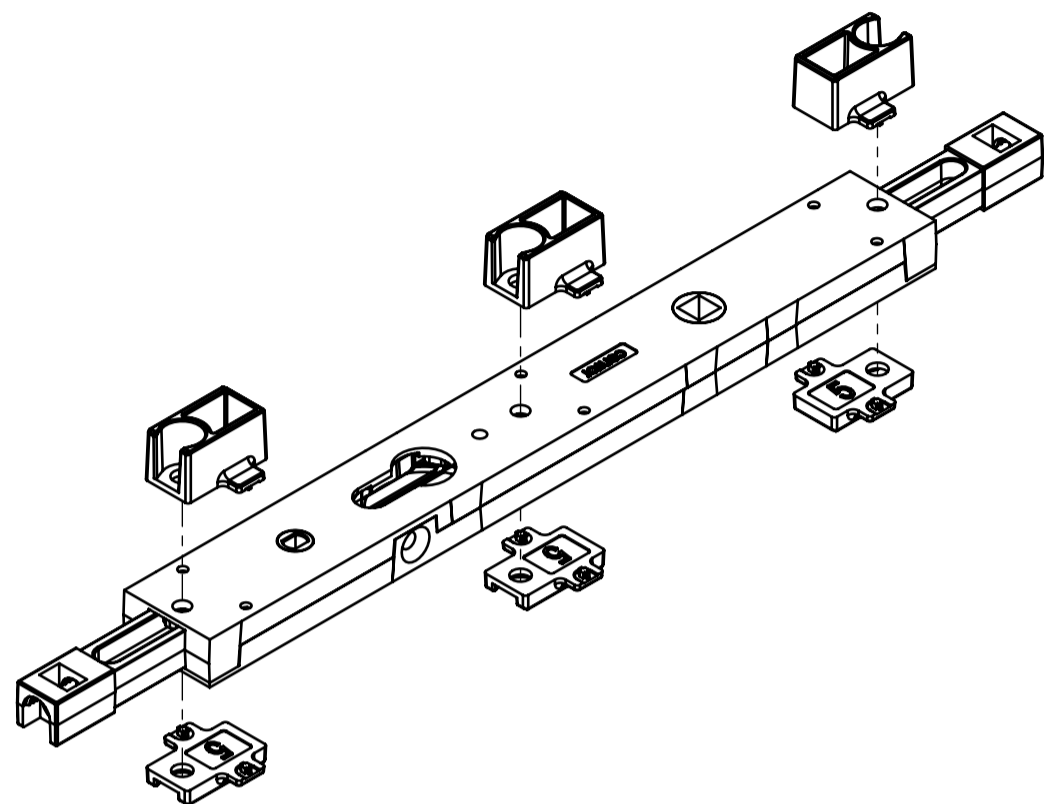
Shim item number	Shim thickness
TPL-038-05-*	5mm
TPL-038-08-*	8mm
TPL-038-16-*	16mm



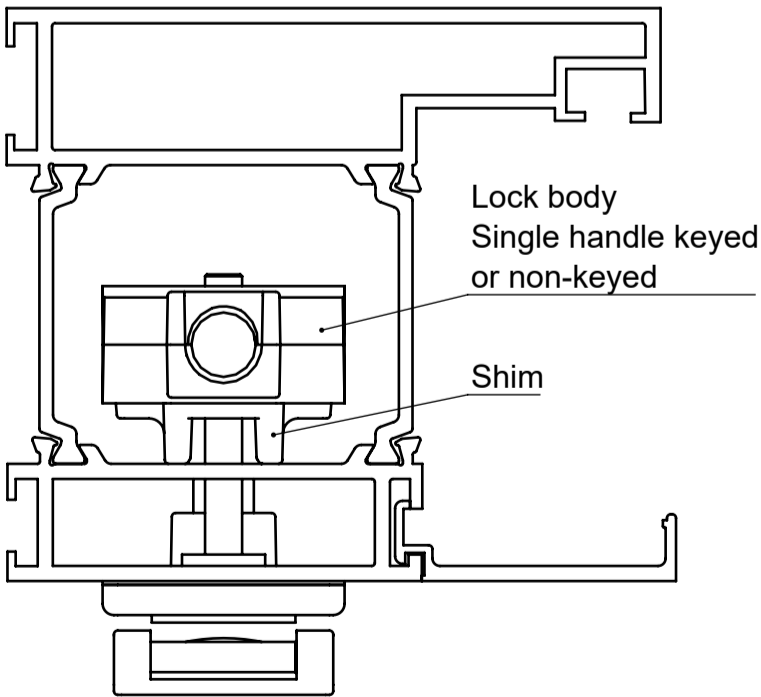
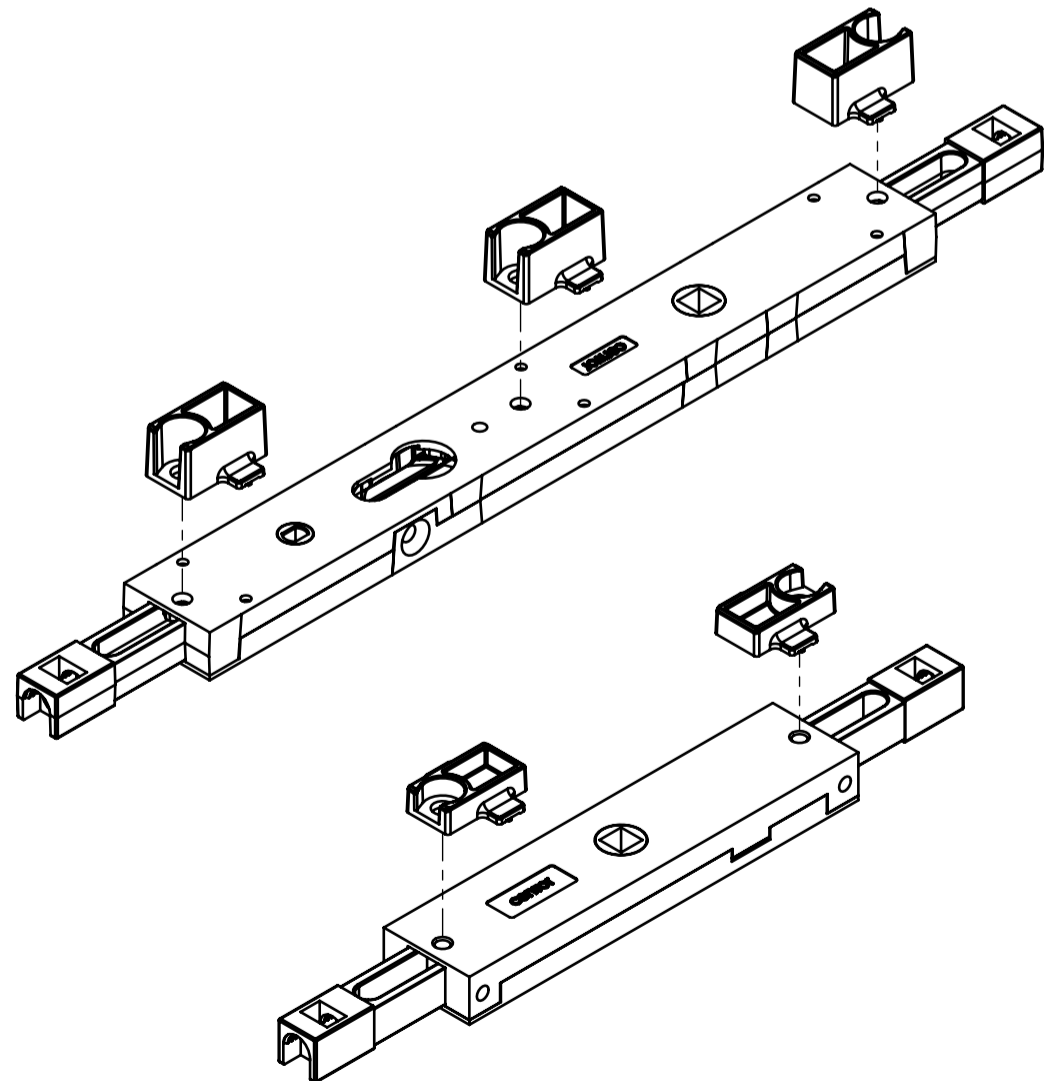
Notes:
8mm shim shown.

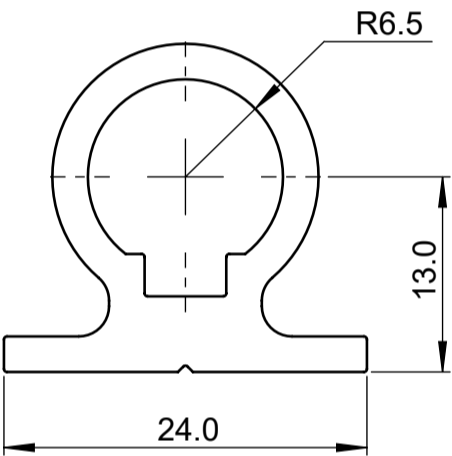
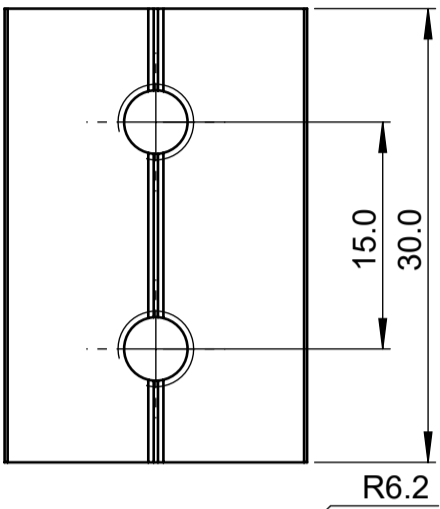
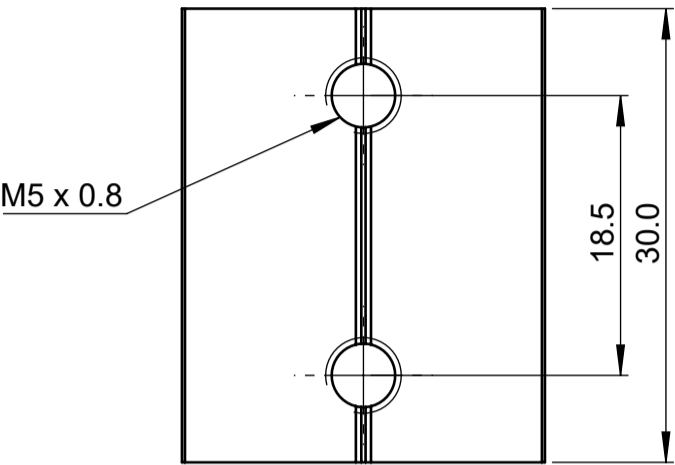
LOCK BODY AND SHIM ARRANGEMENT

Double handle keyed in hollow stile

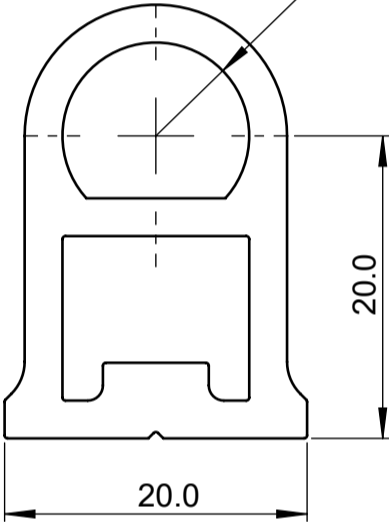


Single handle keyed and non-keyed in hollow stile

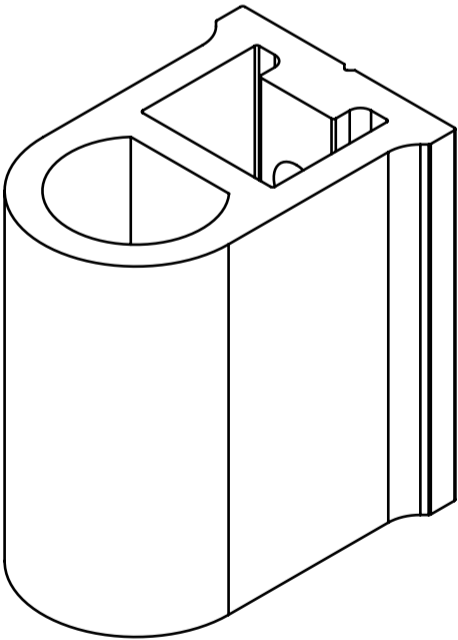
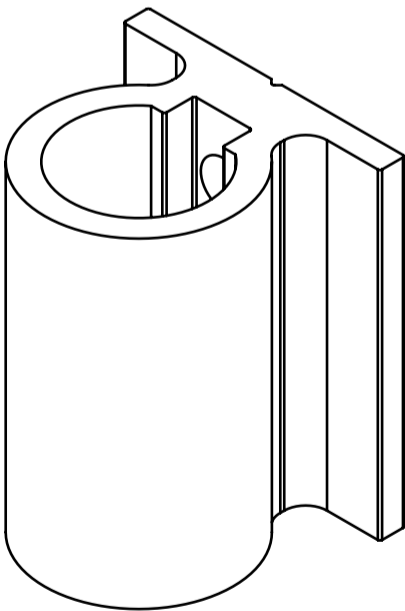




TPL-034

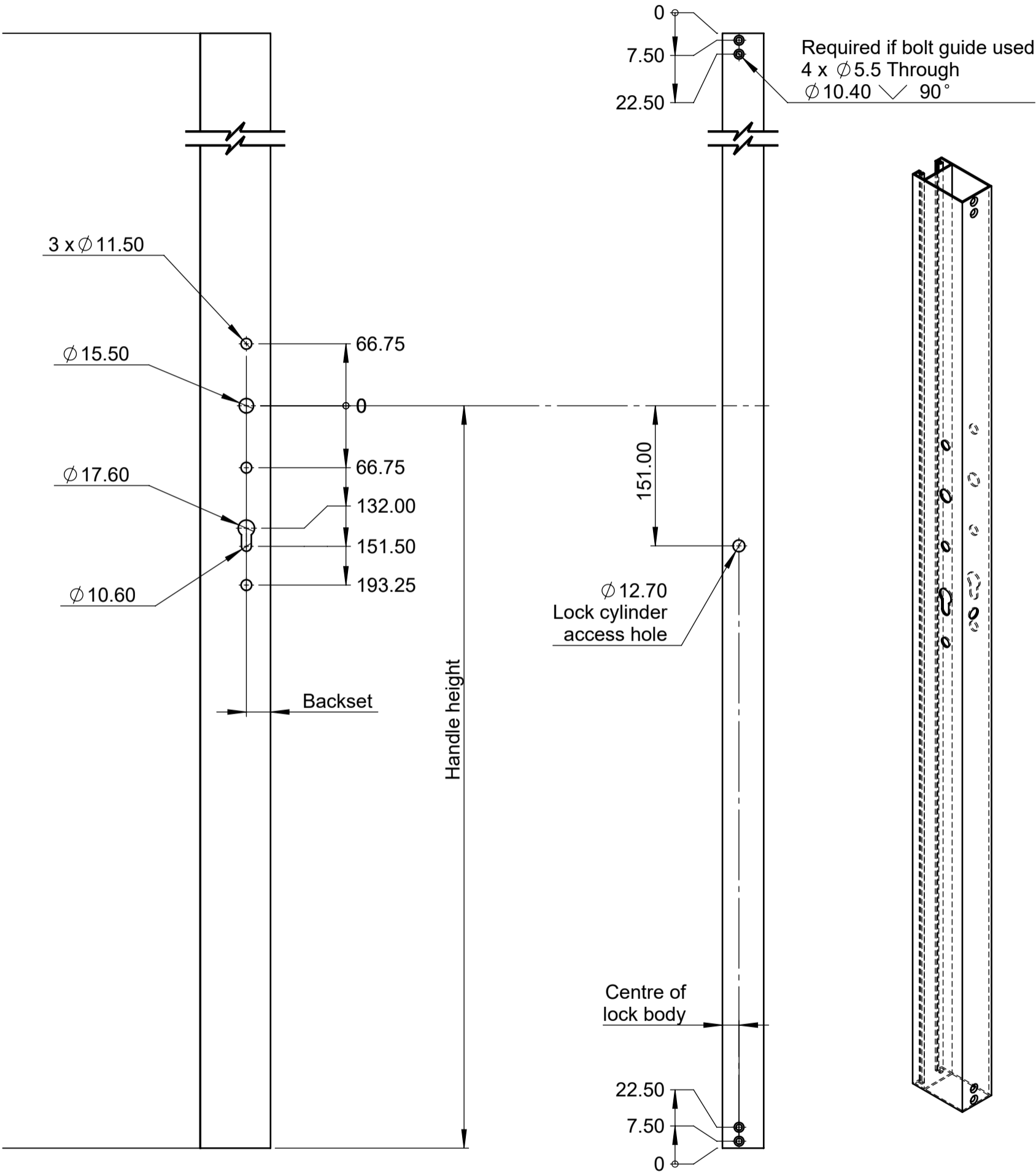


TPL-035



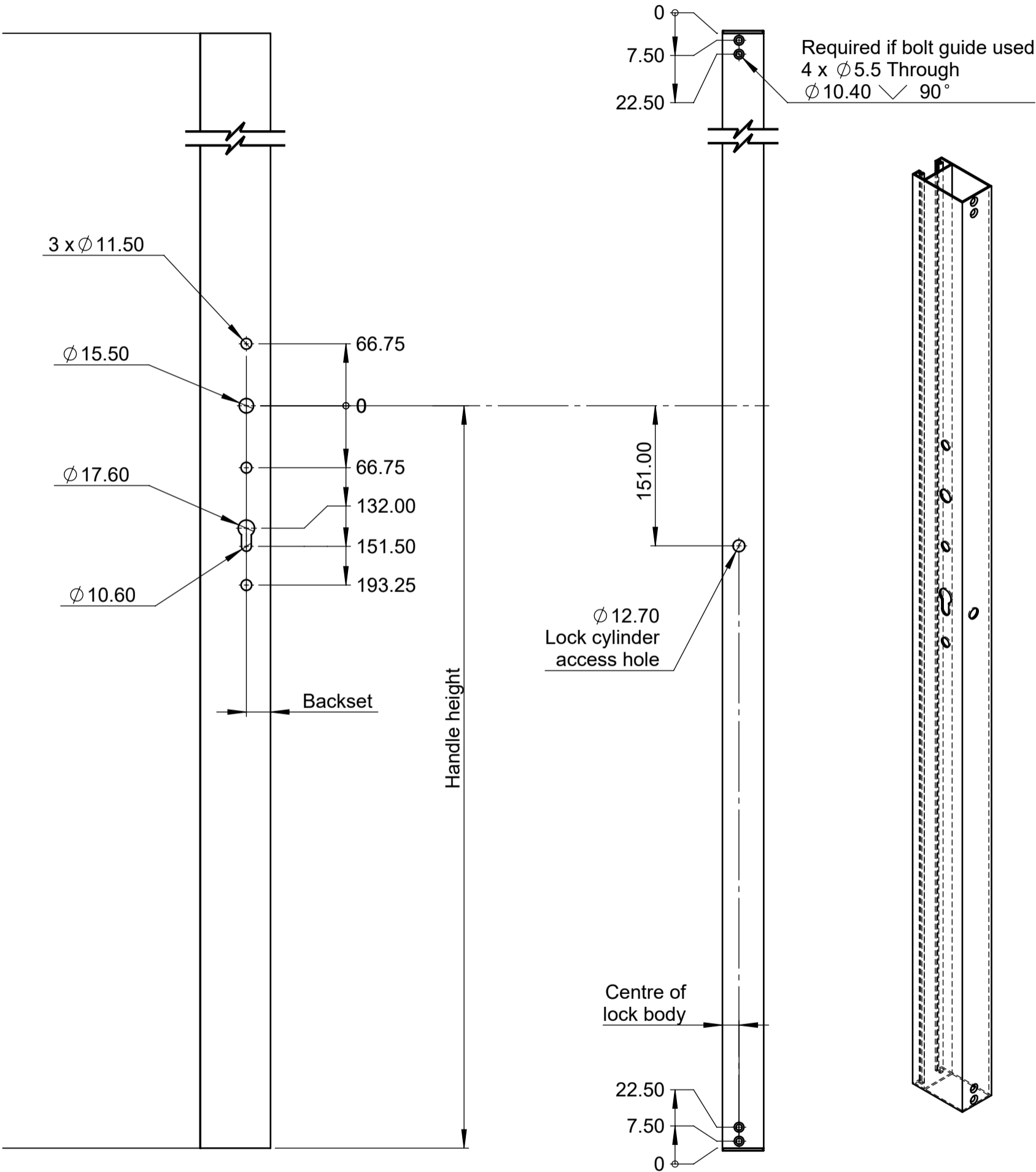
MACHINING DETAIL

Double handle, keyed, long



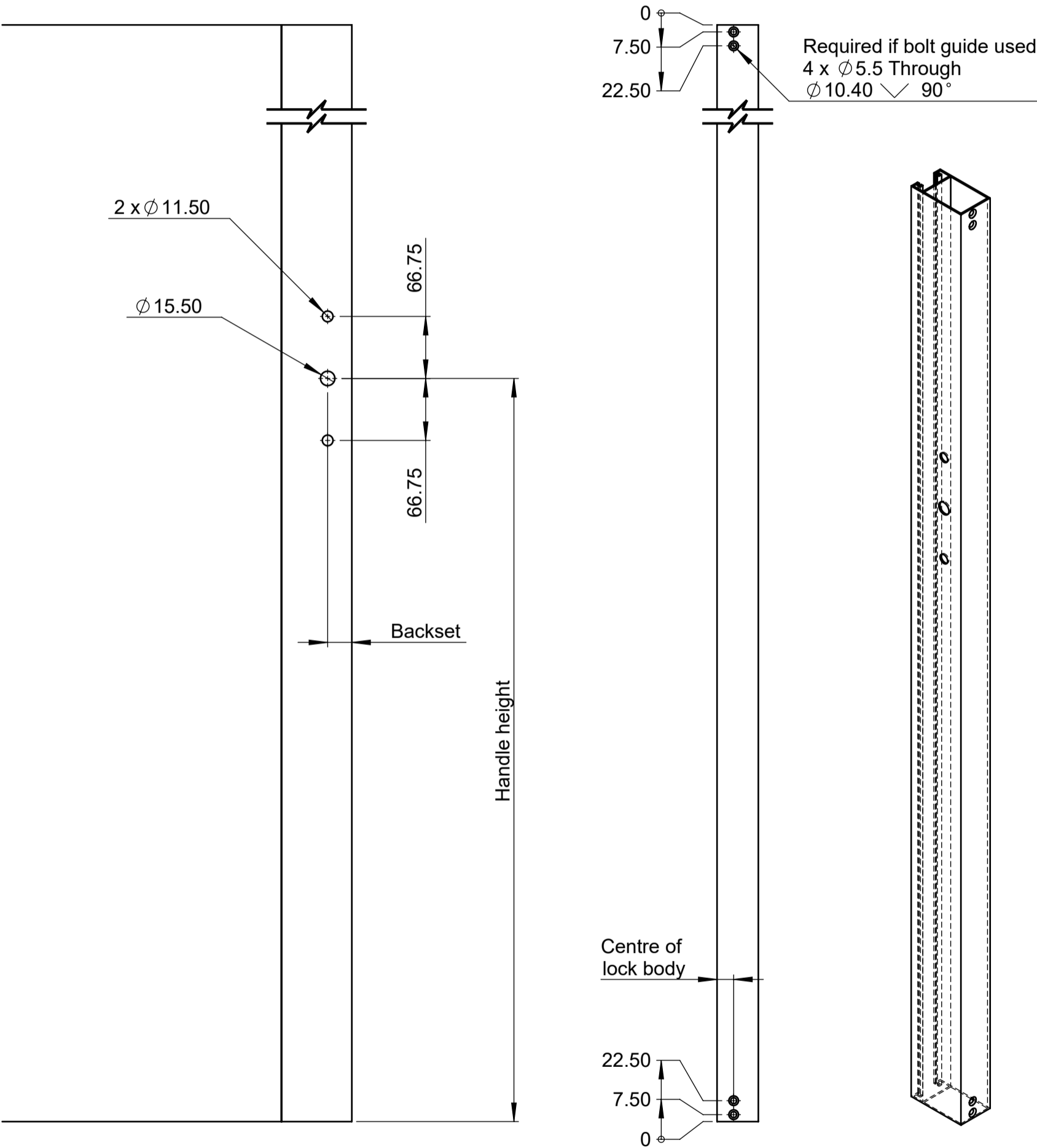
MACHINING DETAIL

Single handle, keyed, long



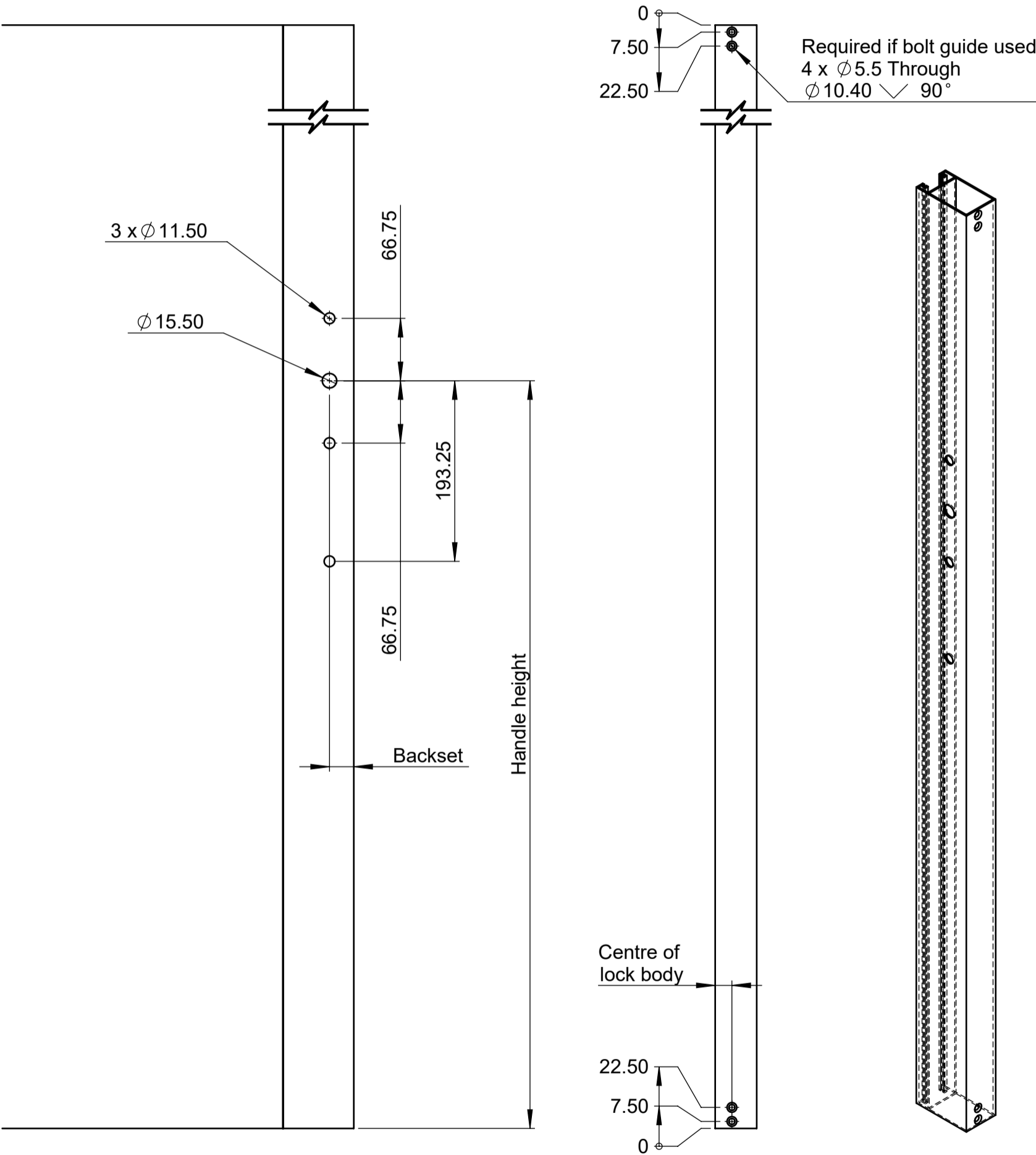
MACHINING DETAIL

Single handle, non-keyed, short

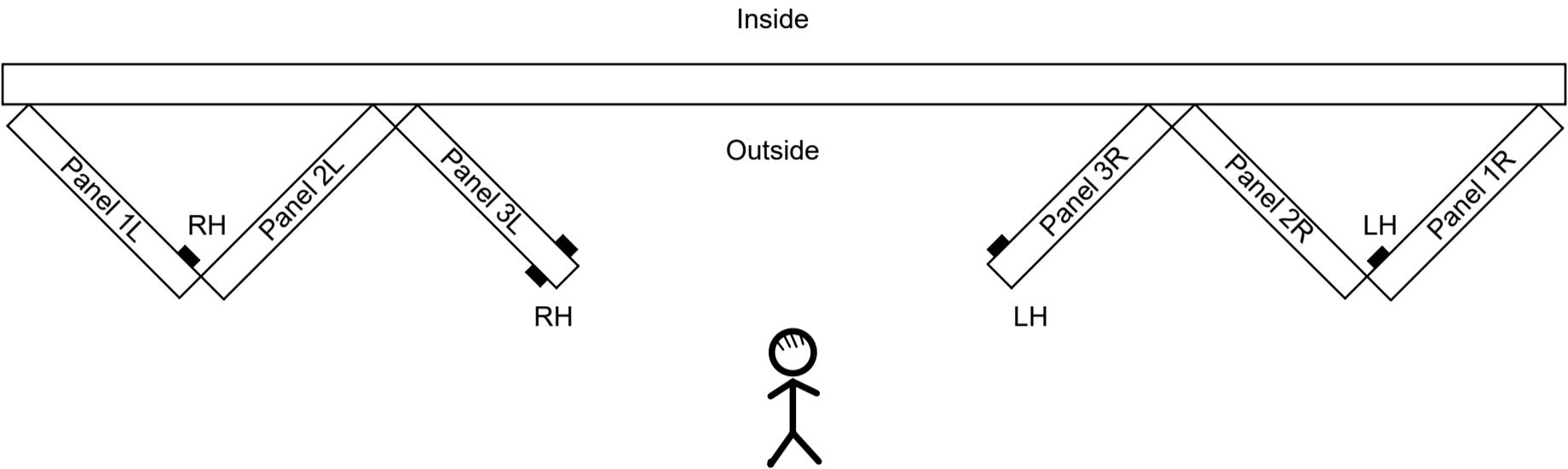


MACHINING DETAIL

Single handle, non-keyed, long

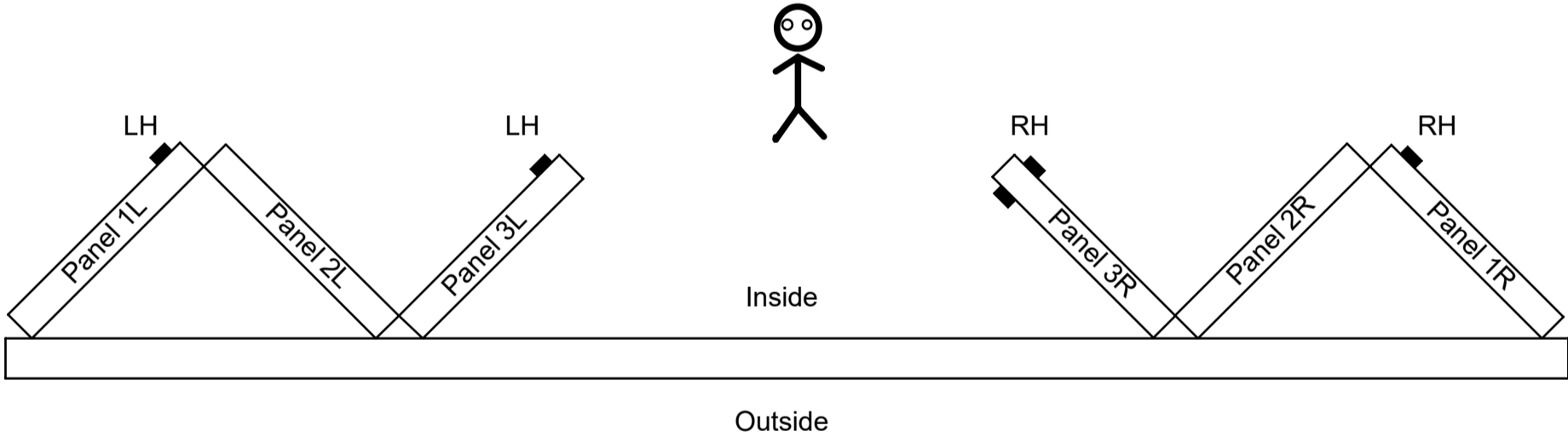


Outward opening



Opening	View	Lock cylinder handing	Location
Outward	From outside	LH - Left hand	Left side of panel
		RH - Right hand	Right side of panel

Inward opening



Opening	View	Lock cylinder handing	Location
Inward	From inside	LH - Left hand	Left side of panel
		RH - Right hand	Right side of panel

- Notes:
- Be careful. The viewing position for defining the handing varies for different features.

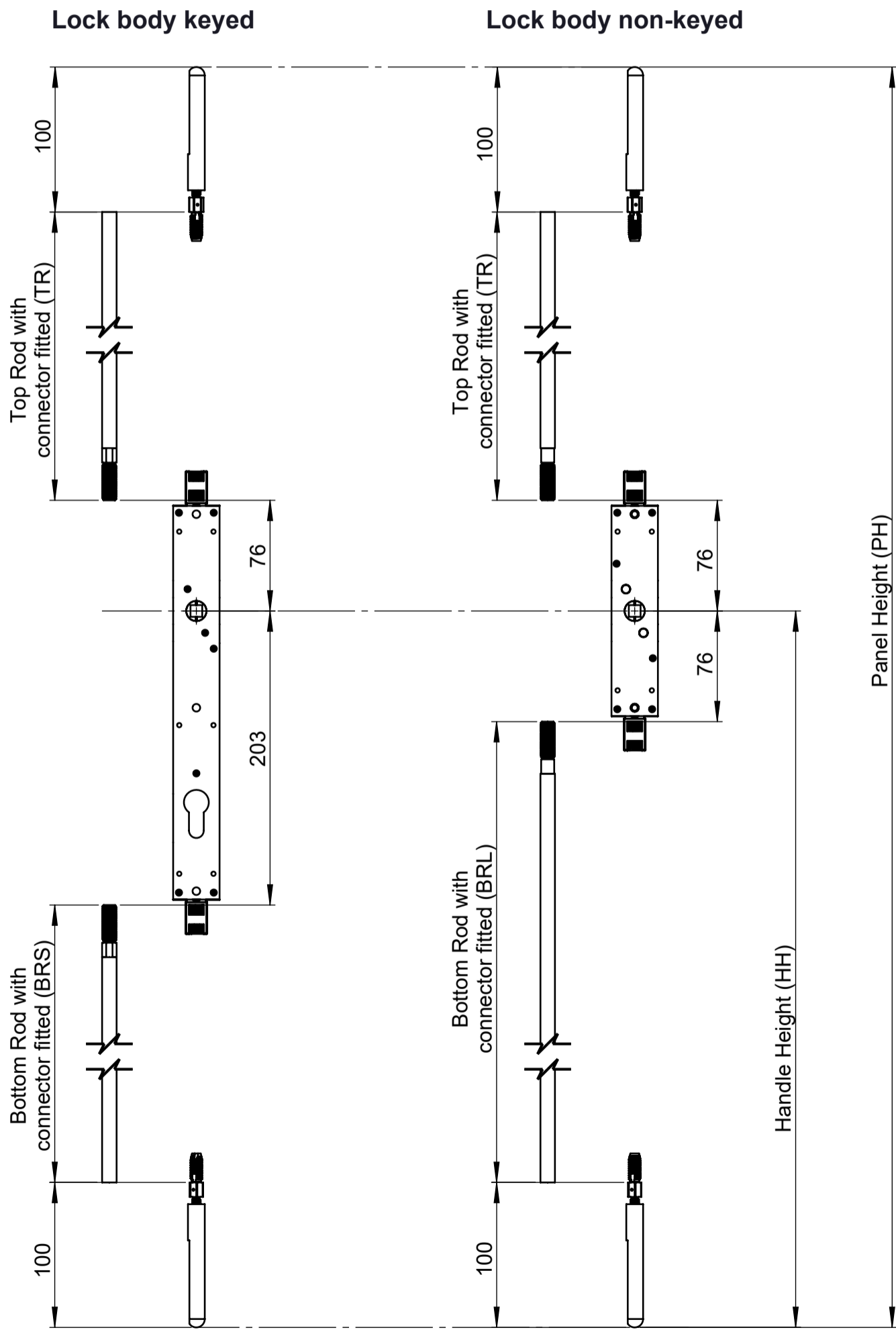
Panels	Always from outside.
Lock cylinders	Outside for outward opening and inside for inward opening.

TRANSMISSION ROD LENGTH FORMULA

Transmission rods with connector fitted

Top	All	$TR = PH - HH - 176$
Bottom	Lock body non-keyed	$BRL = HH - 176$
	Lock body keyed	$BRS = HH - 303$

Notes:
All dimensions in mm.



PANEL AND HANDLE HEIGHT LIMITS

Panel & handle height limits

Handle height			Panel height			
			Min	Max. with transmission rod sets		
				2440	3050	4000
Standard	All lock body	1020	1332	2552	3162	4112
Min	Lock body non-keyed	312	624	1844	2454	3404
	Lock body keyed	439	751	1971	2581	3531
Max	Lock body non-keyed	1102	1414	2634	3244	4194
	Lock body keyed	1229	1541	2761	3371	4321

Transmission rod lengths supplied with kits

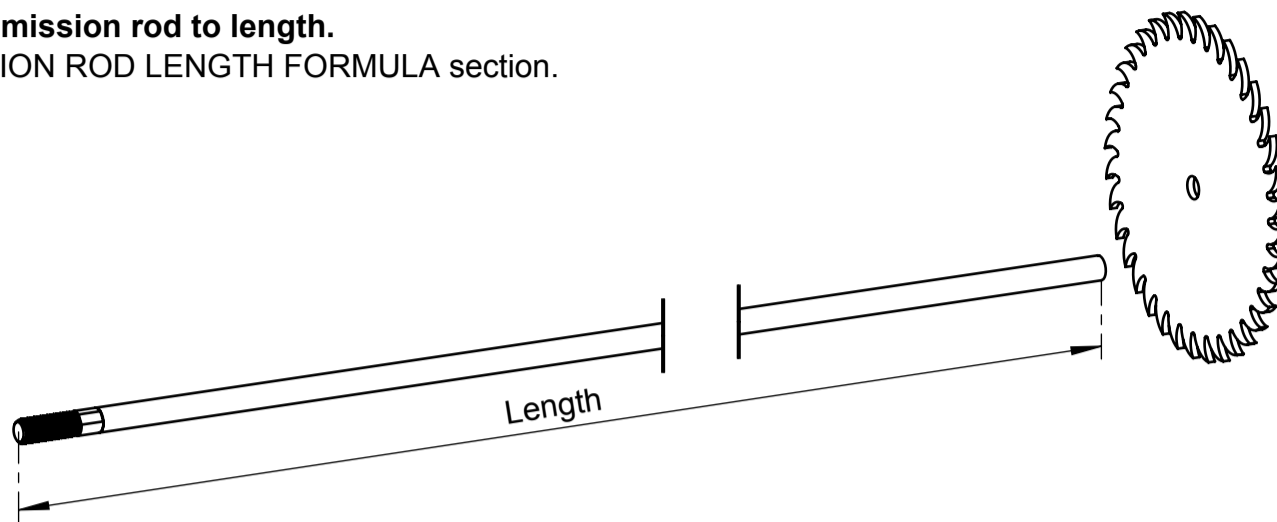
	Transmission rod sets		
	2440	3050	4000
Bottom	926	926	926
Top	1356	1966	2916

- Notes:
- 1. All dimensions in mm.
 - 2. All transmission rod lengths include connector.
 - 3. Refer to graphic in previous page.

TRANSMISSION ROD AND BOLT ASSEMBLY

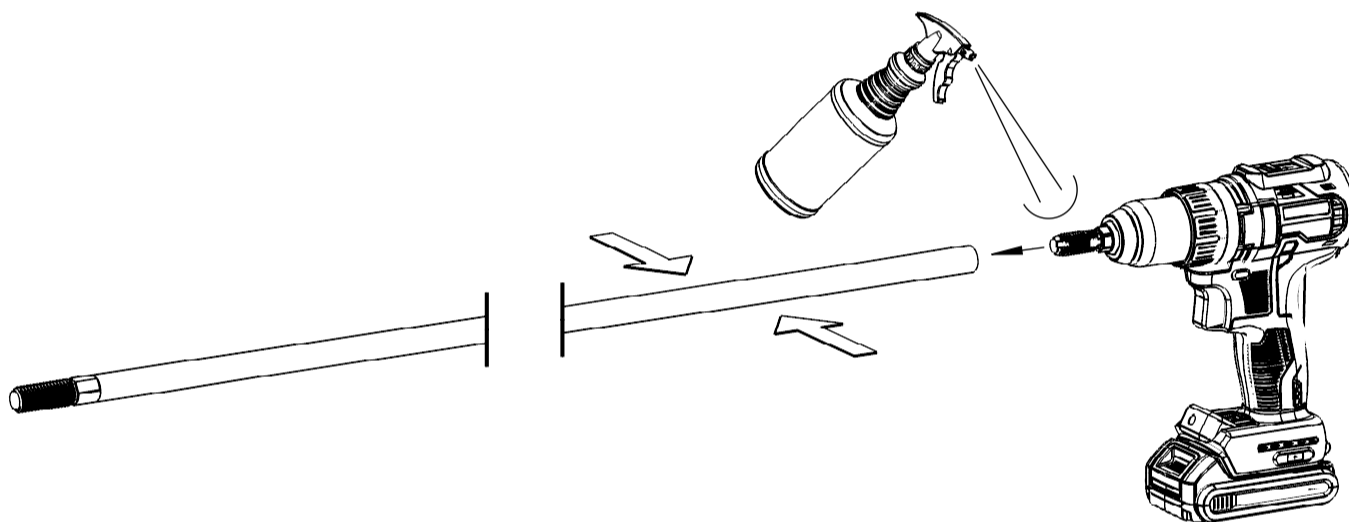
Step 1. Cut the transmission rod to length.

Refer to TRANSMISSION ROD LENGTH FORMULA section.



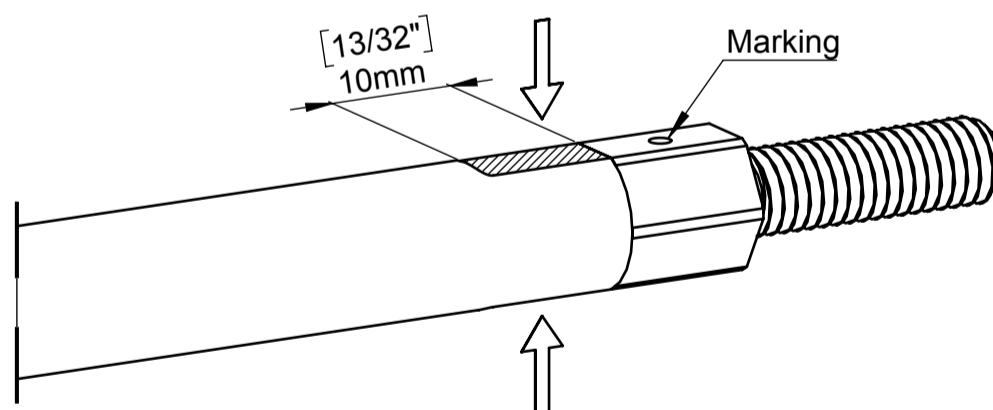
Step 2. Fit the bolt adaptor.

- Clamp the transmission rod so it doesn't rotate.
- Insert the adaptor into power drill and hold firmly - drill with 13mm or 1/2" chuck is recommended.
- Apply thread cutting fluid or WD40 to adaptor.
- Set the drill to low speed and high torque.
- Align the drill with transmission rod and drive adaptor into it until the adaptor bottoms out on its shoulder.



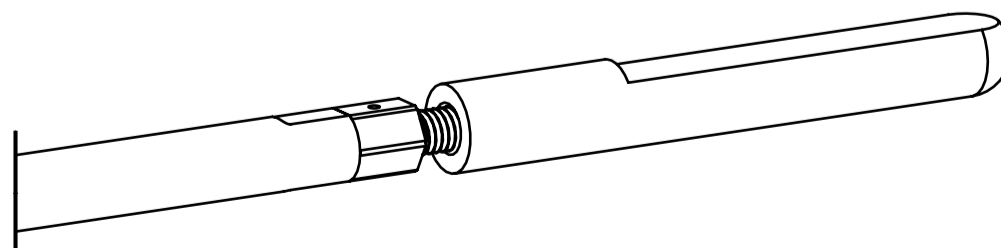
Step 3. Secure the bolt adaptor.

- Use a hammer to dent the tube to prevent the adaptor from rotating. Hit in line with the marking.
- Do the same on the opposite side.



Step 4. Fit the bolt.

- Thread the bolt onto the adaptor.
- After lock installed, adjust the bolt in and out to suit the panel height - refer to **Bolt Adjustment Detail** section.



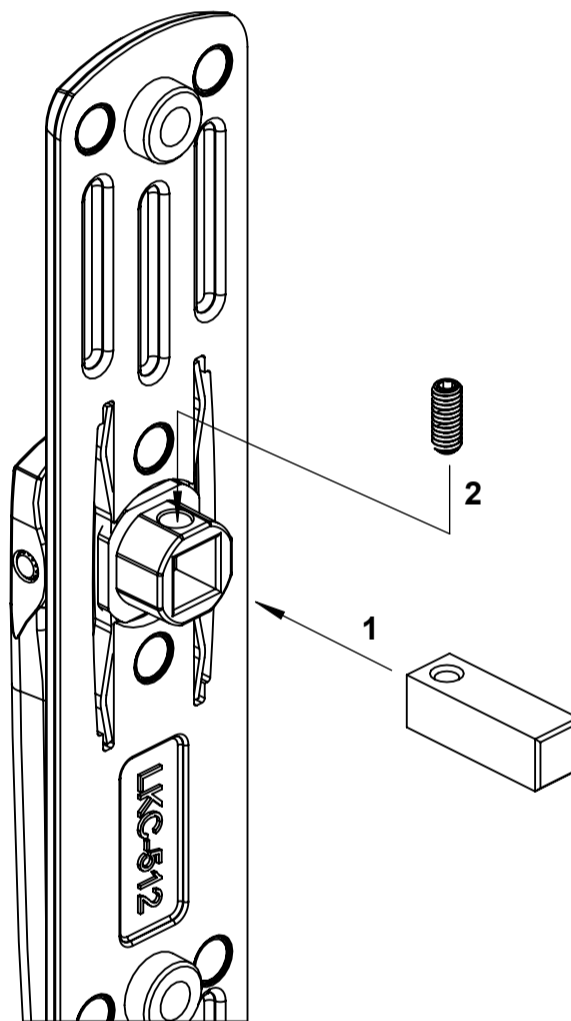
This section is required for zinc diecast handles only

Step 1: Insert the spindle into the square hole as shown.

Step 2: Thread the grub screw into the spindle until it bottoms out. Then unwind for half a turn or so to loosen the spindle.
This will make the handle more flexible when fitting into the lock body.

Refer to TwinPoint Gen2 Handle technical document section **ZINC DIECAST HANDLES H02 - SPINDLE & SCREWS** to select the spindle and mounting screws with the correct lengths or modify them if needed.

For double handle, always fit the spindle to the internal handle.



Centor UK Ltd

Birmingham
+44 (0) 121 701 2500
mail.uk@centor.com
centor.com

Centor Europe Sp zo.o

Stryków
+48 42 206 8810
mail.ce@centor.com
centor.com