

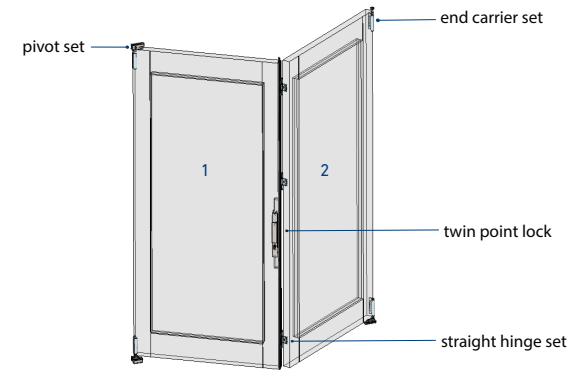
F3

FLOOR ROLLING FRAME INSTALLATION INSTRUCTIONS

centor.com

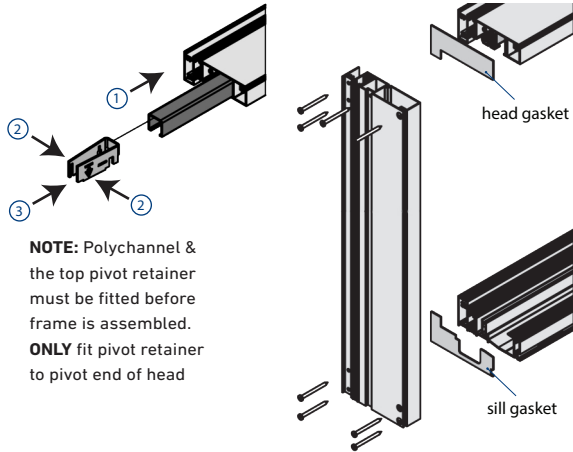
centor®

HARDWARE SET LOCATIONS

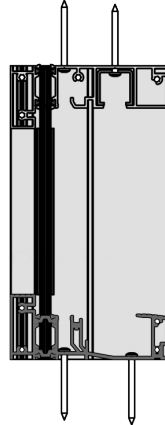


2L configuration shown for illustration purposes.

1. ATTACH JAMBS TO HEAD AND SILL



2. INSTALL FRAME TO OPENING



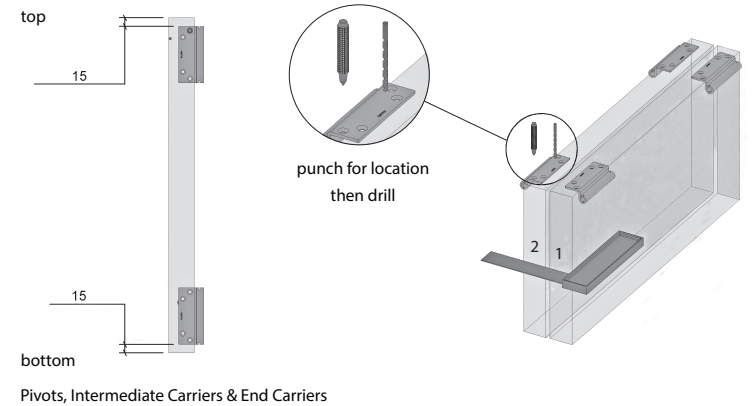
Fixing grooves included in the profiles.

Fix through guide and carrier channels making sure not to obstruct hardware.

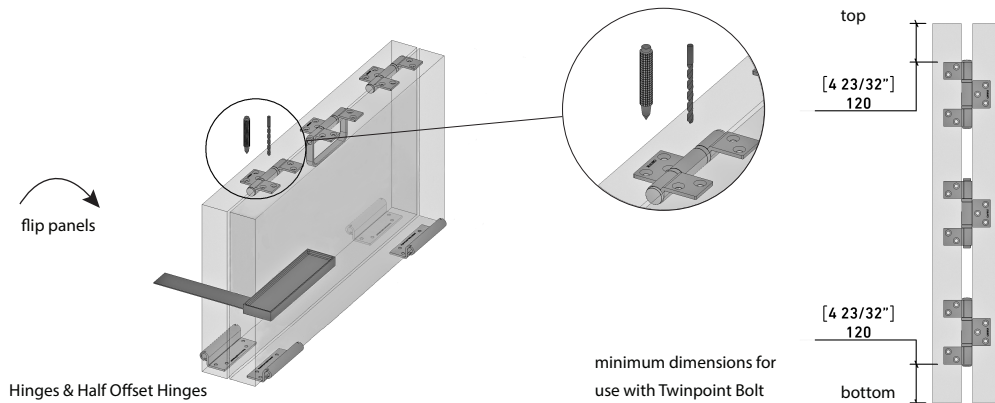
Fix 100mm (4") from the ends and 430mm (17") centres thereafter

Head and sill to align vertically.

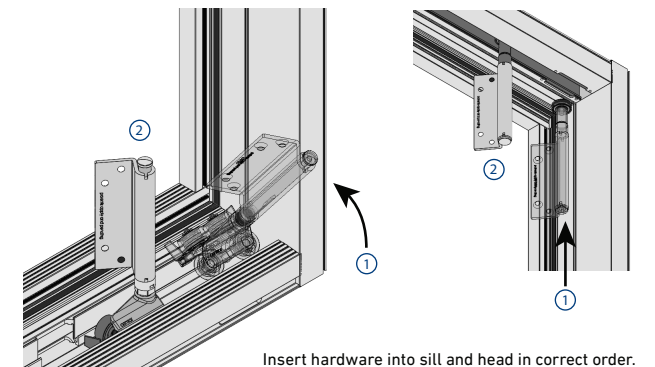
3. PRE-DRILL PANELS



3. PRE-DRILL PANELS

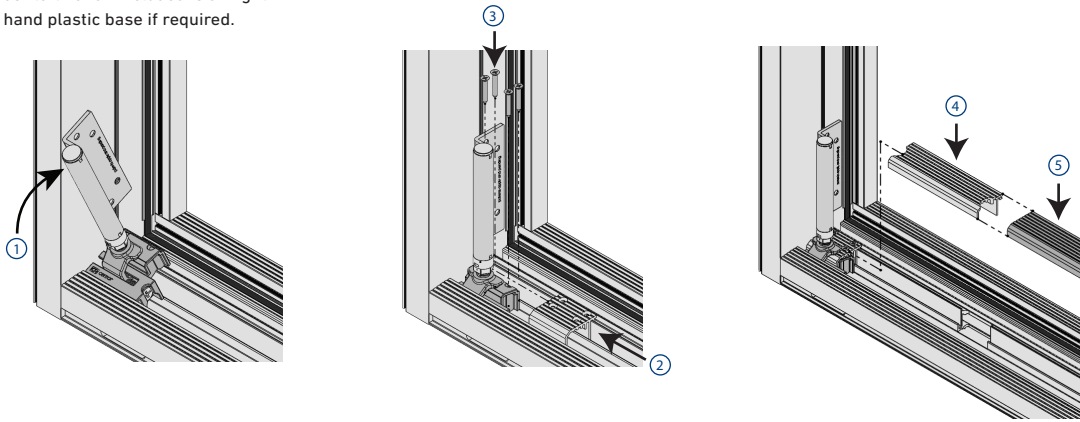


4. FIT HARDWARE INTO TRACK

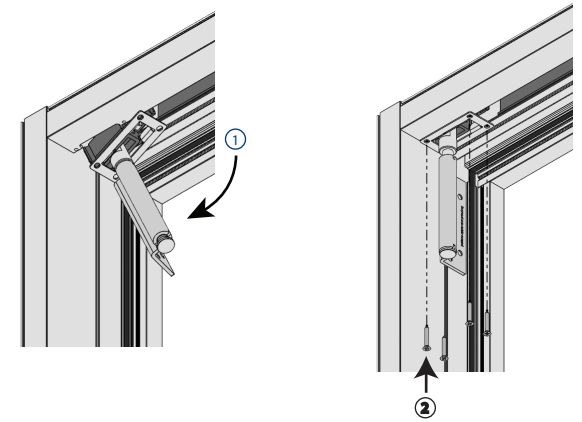


5. FIT BOTTOM PIVOT

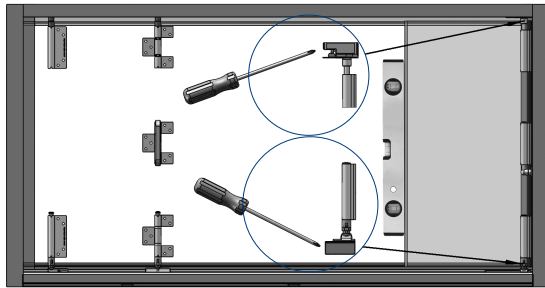
NOTE: The bottom pivot is packed as "left hand". Included is a "right hand plastic base if required.



6. FIT TOP PIVOT

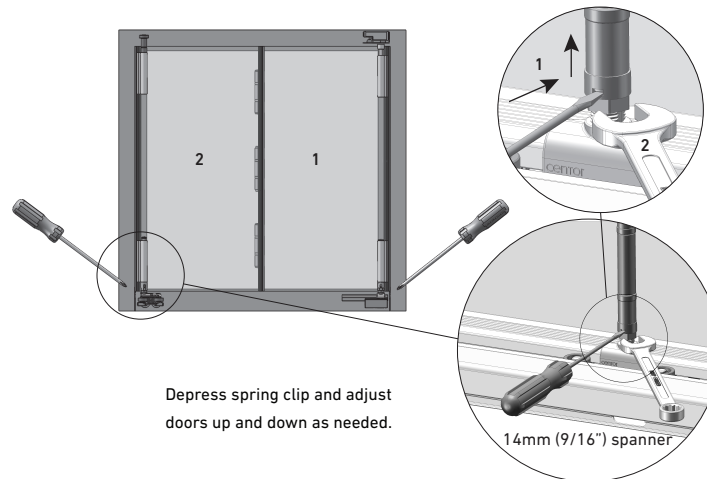


7. ADJUST PIVOTS



Ensure pivot panel is vertical (plumb) using adjustment screws in top and bottom pivot blocks. Attach the other panel.

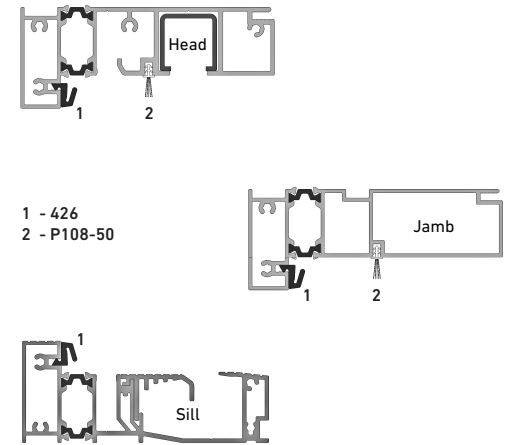
8. HEIGHT ADJUSTMENT



Depress spring clip and adjust doors up and down as needed.

14mm (9/16") spanner

9. INSERT SEALS



Seal positions.