

TwinPoint Gen2
HOLLOW PANELS



Folding door lock with internal and external access

centor®

INDEX

File download information	3
<hr/>	
Product details	
Exploded view	4 - 6
Assembly detail	7
Lock cylinder	8
Bolts	9 - 11
Shim	12 - 13
Bolt guide	14
<hr/>	
Machining details	15-17
<hr/>	
Lock handing definition	18
<hr/>	
Instructions	
Formulas and limits	19 - 20
Assembly	21 - 22
<hr/>	

Download options

Centor's brochures, technical documents and drawings can be downloaded from;

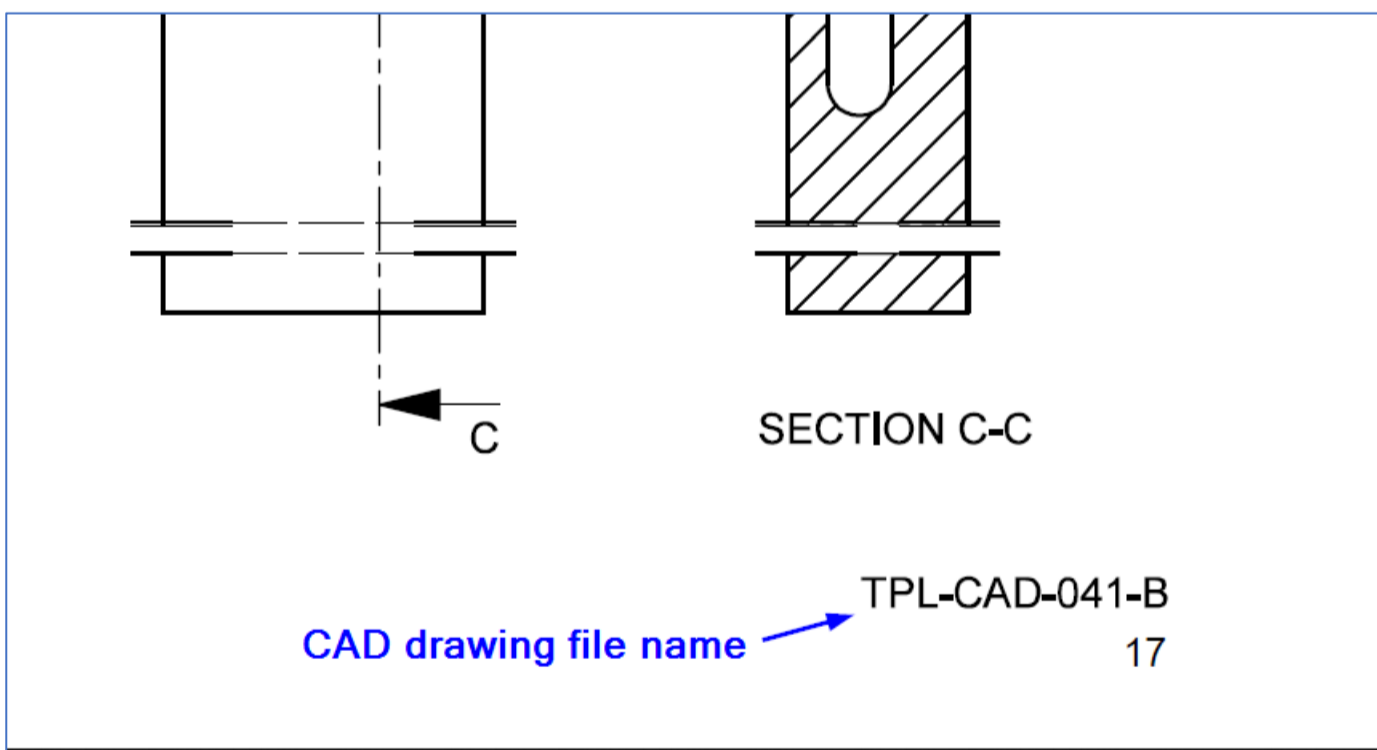
1. Bottom of the TwinPoint Gen2 website page
2. Professional section of Centor's webpage
3. This link. <https://centor.com/us/hardware-systems/accessories/centor-twinpoint-lock>

Downloads	
TwinPoint Gen2 Brochure	pdf
TwinPoint Gen2 Hollow Panels technical document	pdf
TwinPoint Gen2 Wood Panels technical document	pdf
TwinPoint Gen2 Drawings (dwg)	zip
TwinPoint Gen2 Drawings (dxf)	zip

2D CAD drawing download

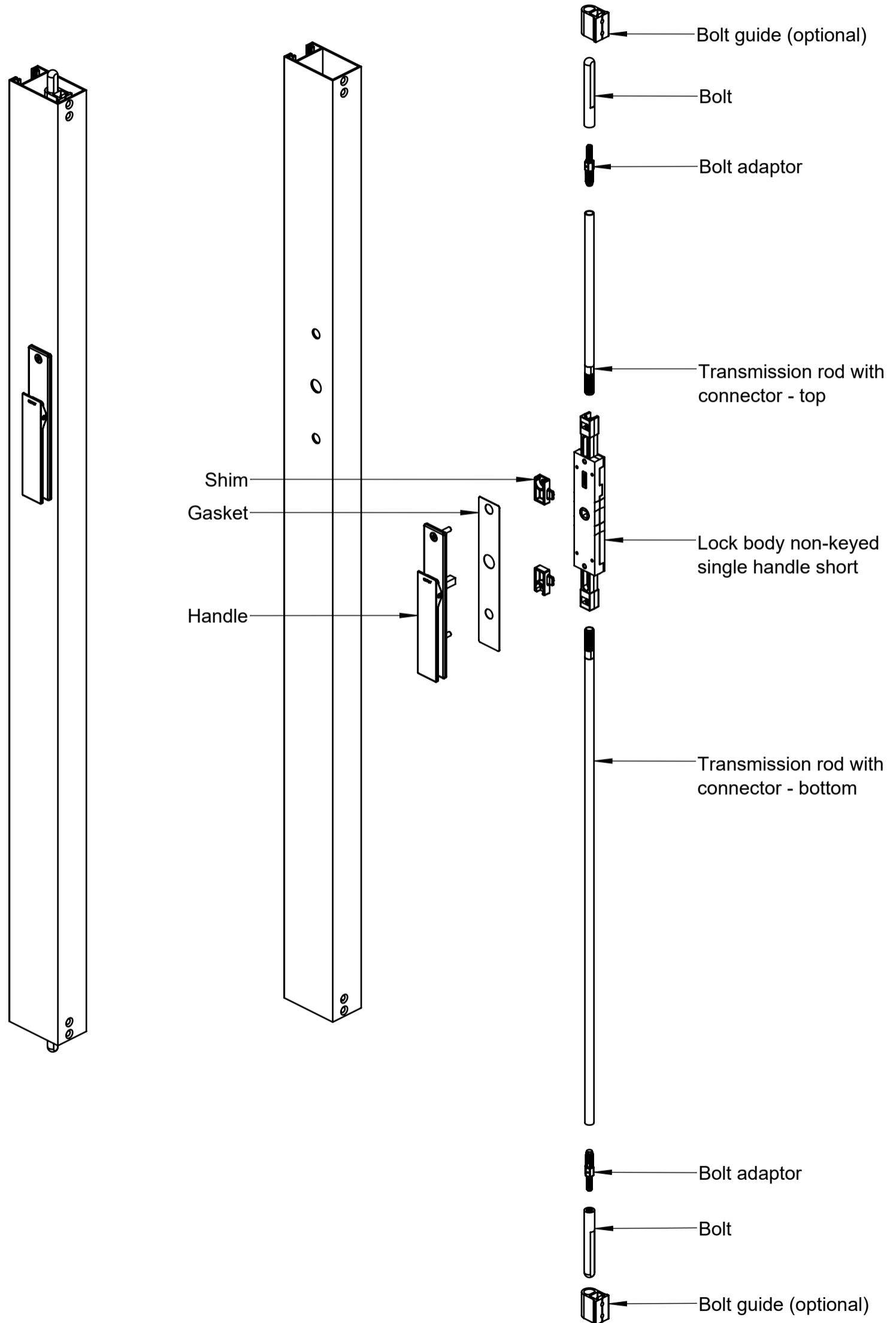
The drawings download provides a folder that contains all the drawings.

1. There are two folders. One for dwg and one for dxf.
2. Use the technical documents as an index to select the appropriate drawing. The drawing file name is printed at the bottom right corner of the page.



PRODUCT DETAIL

Hollow panel with TwinPoint Gen2 single handle, non-keyed, short

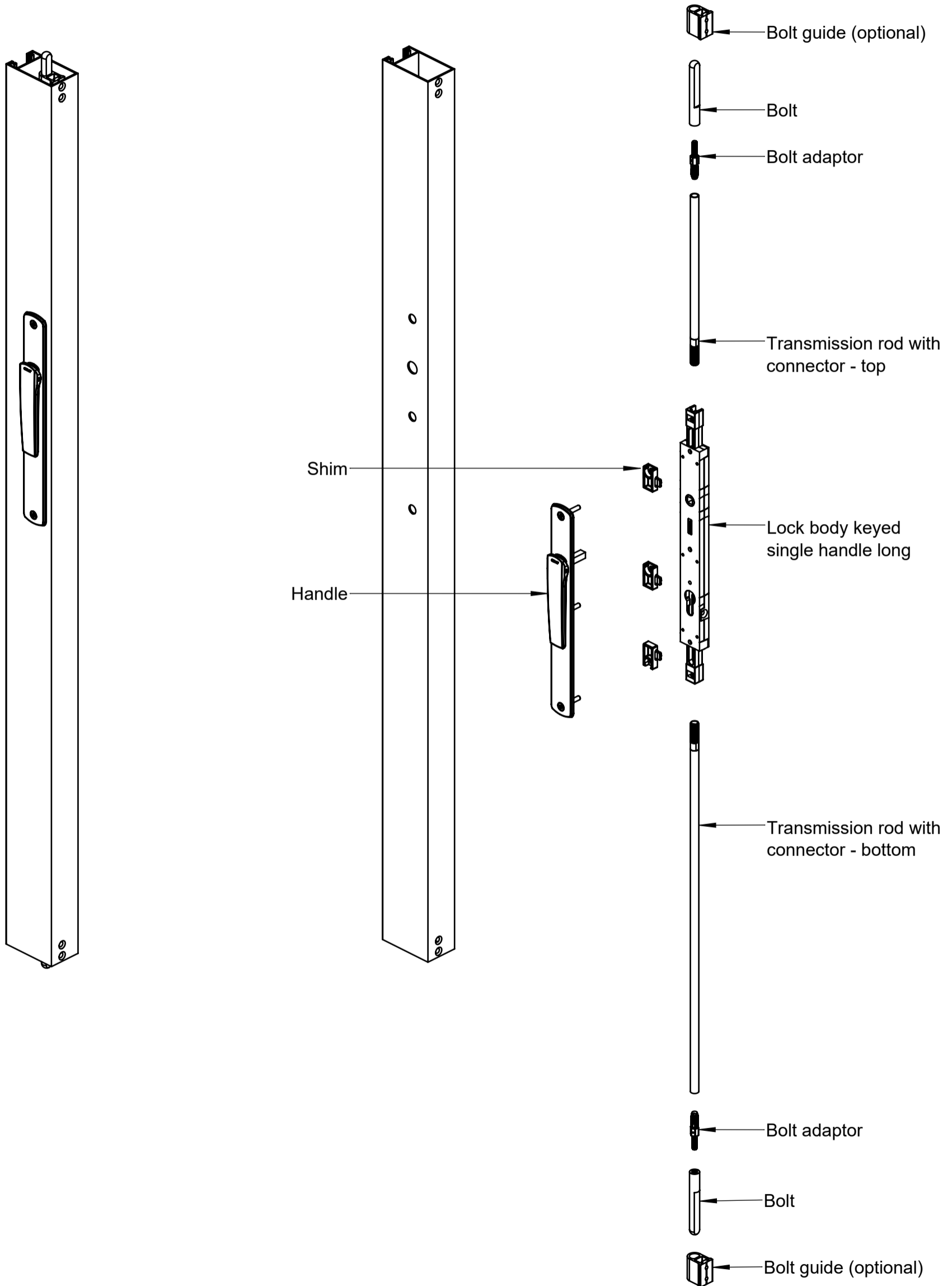


Notes:

1. Stainless steel single handle, non-keyed, short shown. Zinc diecast single handle, non-keyed, short is fitted the same way.
2. Gasket not required for zinc diecast handles.

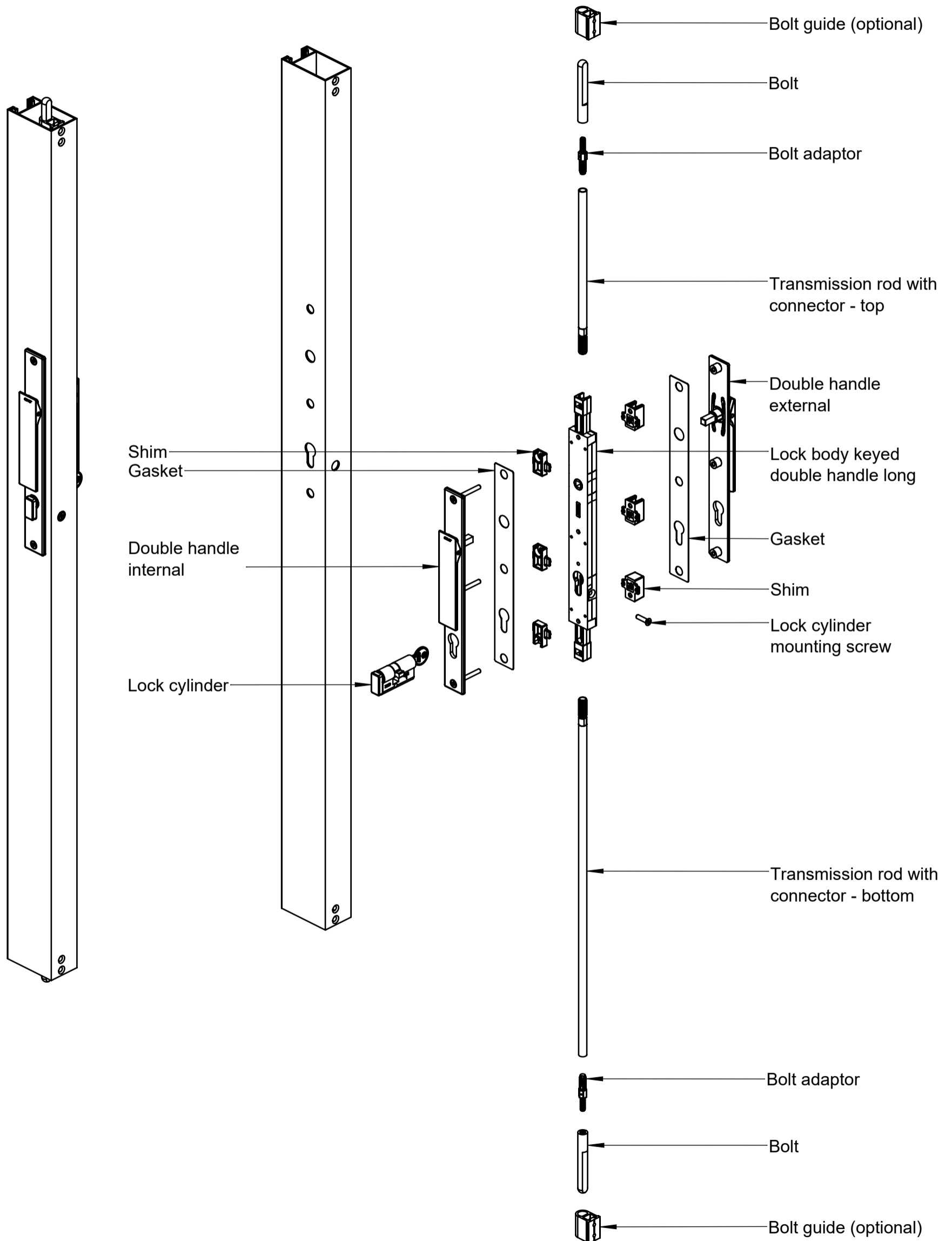
PRODUCT DETAIL

Hollow panel with TwinPoint Gen2 zinc diecast single handle, non-keyed, long



PRODUCT DETAILS

Hollow panel with TwinPoint Gen2 double handle, keyed, long

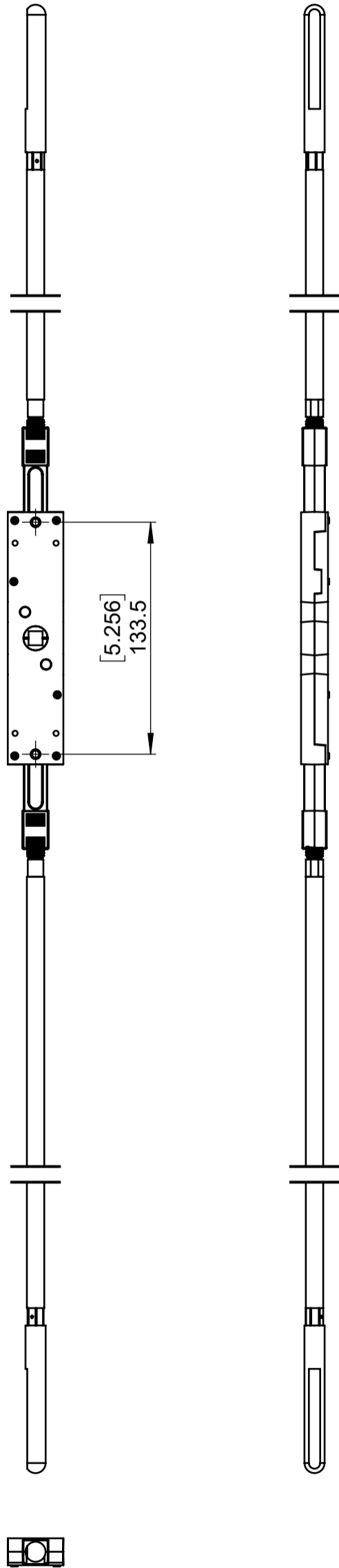


Notes:

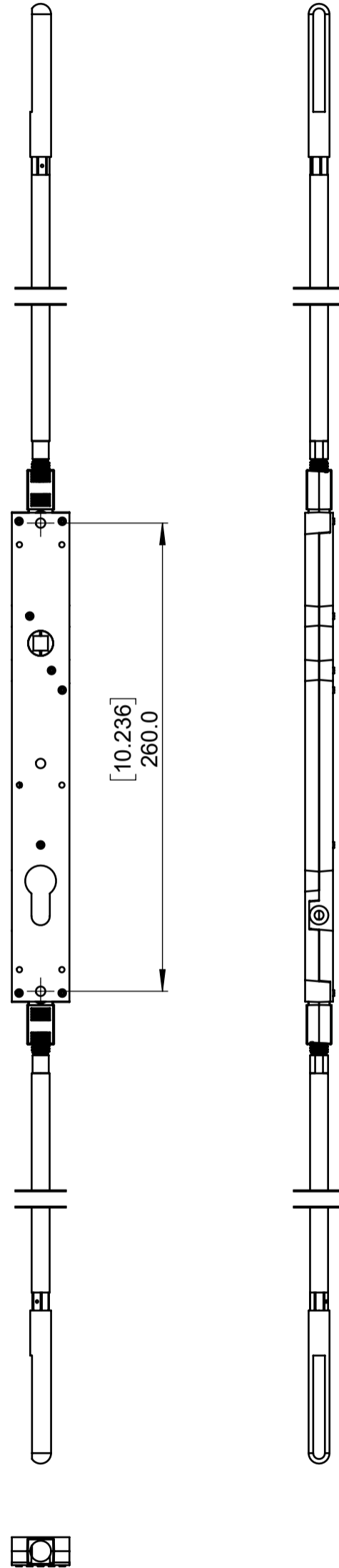
1. Stainless steel double handle, keyed, long shown. Zinc diecast double handle, keyed, long is fitted the same way.
2. Gasket not required for zinc diecast handles.

ASSEMBLY DETAIL

Non-keyed



Keyed



Notes:
Lock shown in extended state.

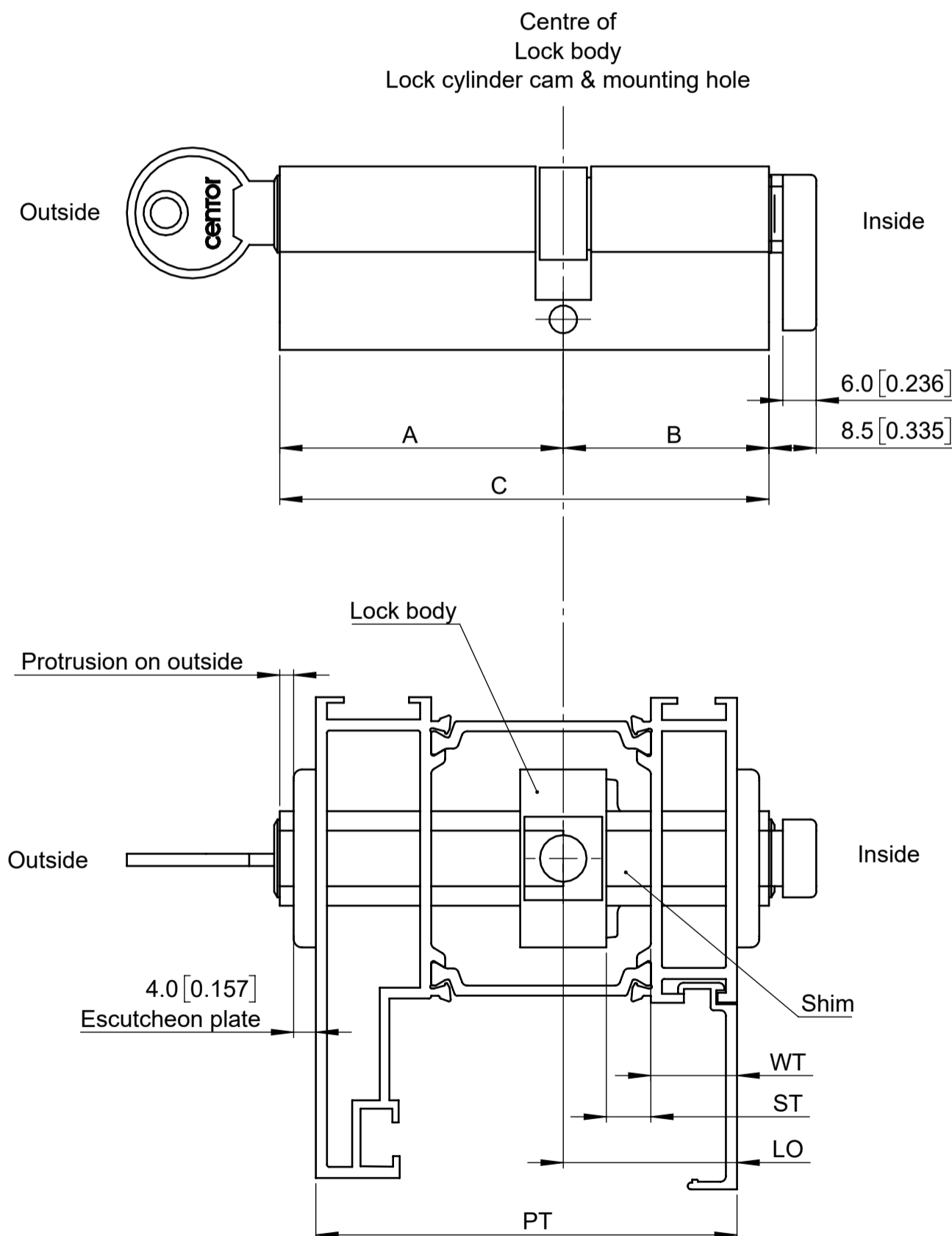
LOCK CYLINDER DETAIL

Lock cylinder sizes

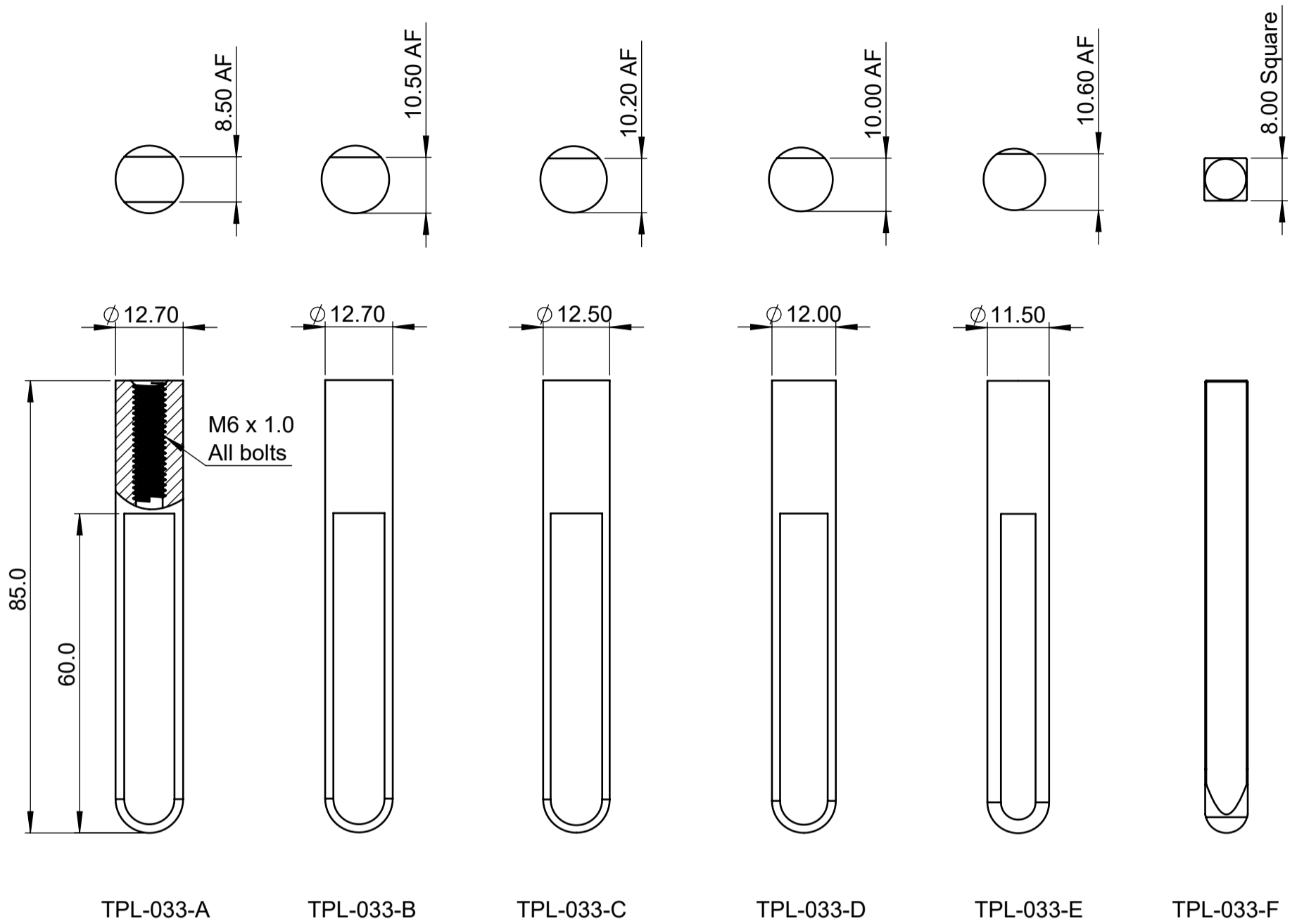
Cylinder item#	Opening	Panel thickness PT	Lock body offset LO	Cylinder dimension		
				A	B	C
TPL-019-*	Outward & inward	44.45mm [1.750]	18.0mm [0.709"]	31.5mm [1.240"]	22.5mm [0.886"]	54mm [2.126"]
TPL-020-*		57.15mm [2.250]	26.0mm [1.024"]	36.5mm [1.437"]	30.5mm [1.201"]	67mm [2.638"]

Notes:

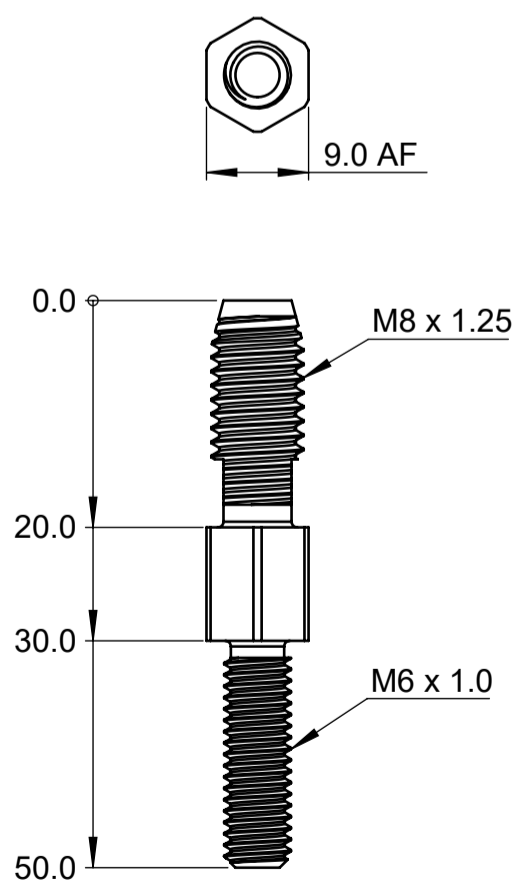
- The lock cylinder can not protrude on the inside or the thumb turn will hit the opposite stile when the doors are opened.
- The protrusion on the outside when fitted to thinner panels = $A - PT + LO - 4.0\text{mm}$
 - LO refers to lock body offset which is the distance from the inside face of the panel to the centre of lock body. $LO = WT + ST$.
 - WT refers to the extrusion wall thickness.
 - ST refers to shim thickness.



BOLT DETAILS



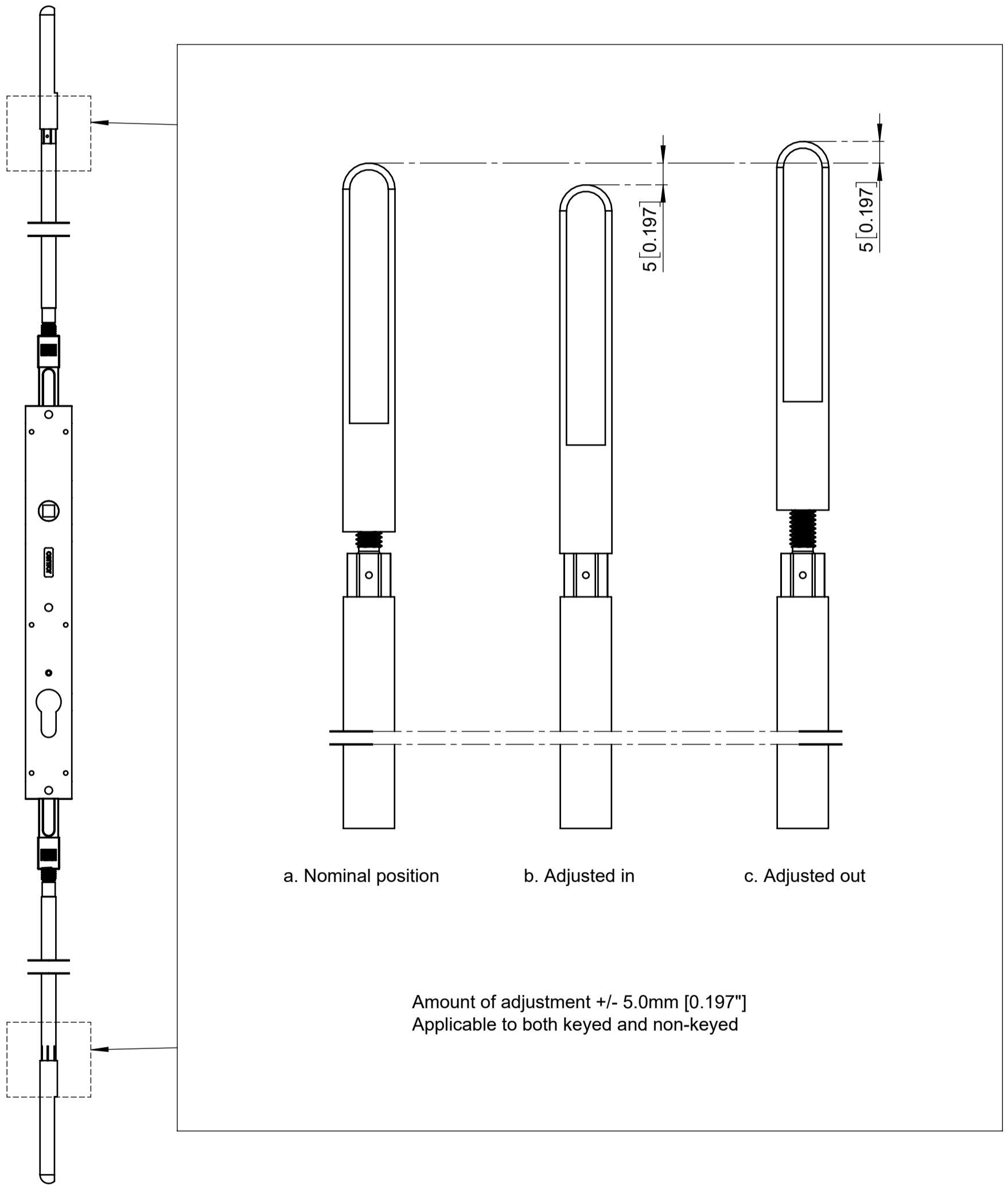
The bolt adaptor (supplied with any bolt)



Notes:

1. All dimensions in mm.

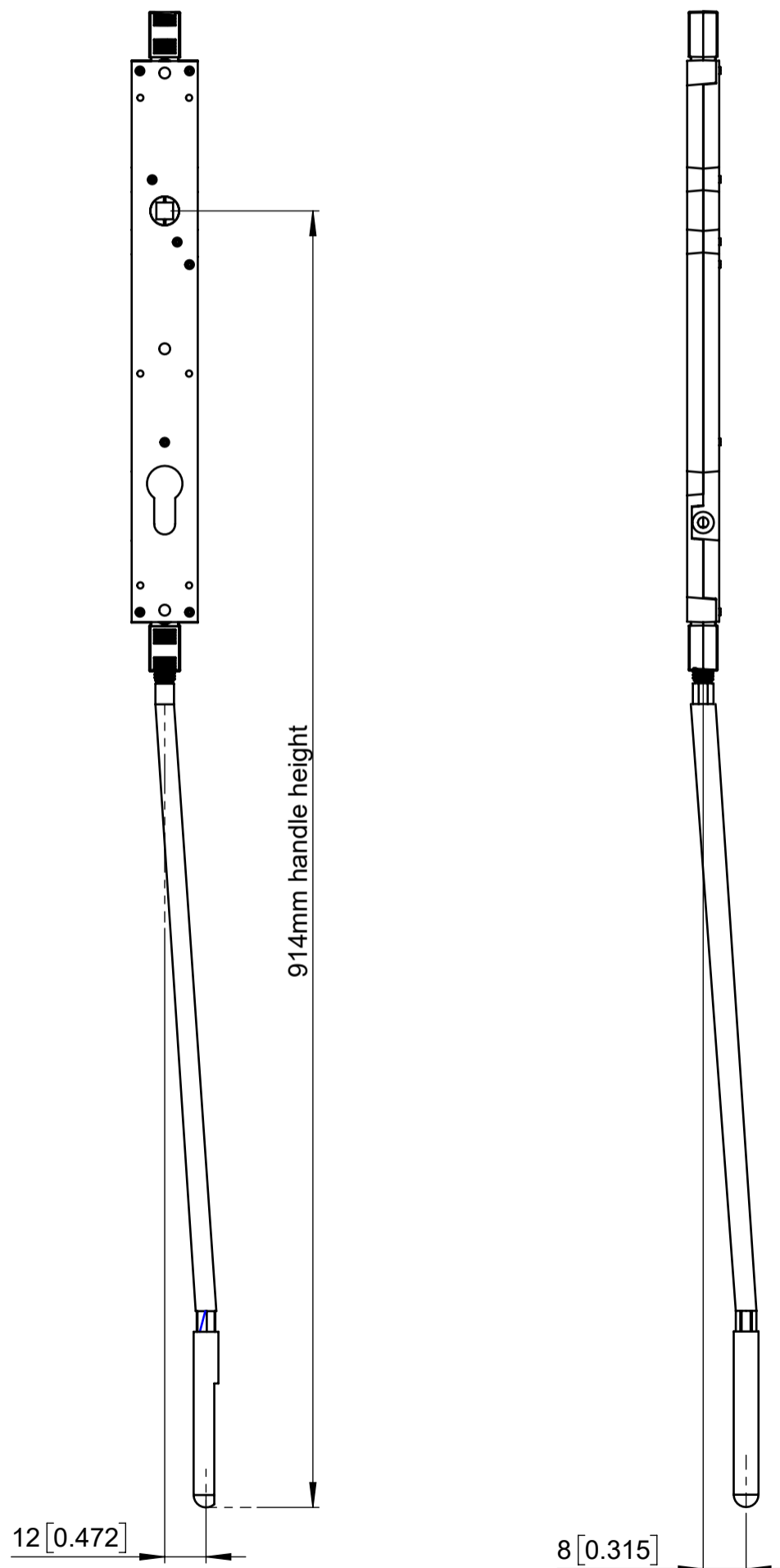
BOLT ADJUSTMENT DETAIL



LOCK BODY & BOLT ALIGNMENT

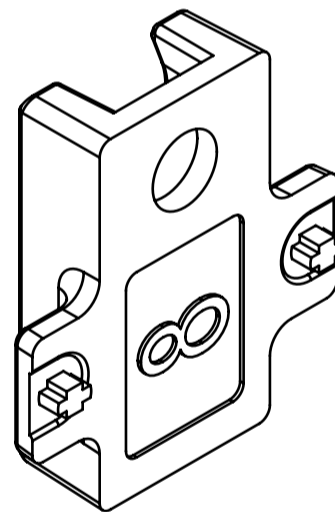
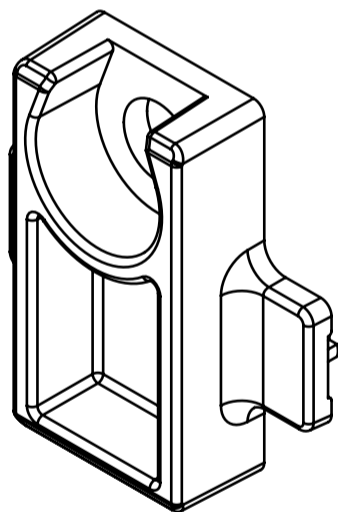
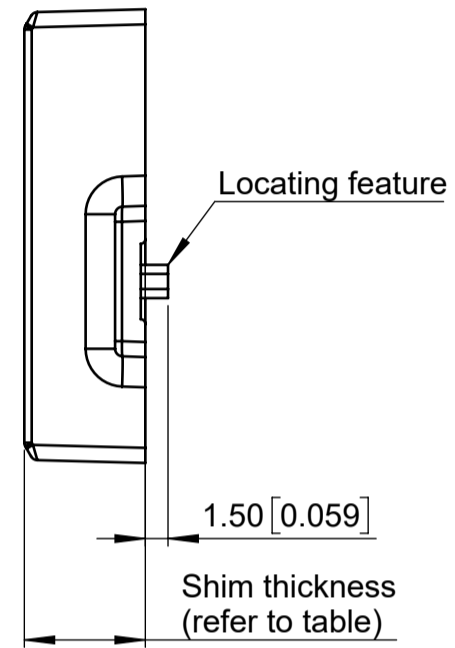
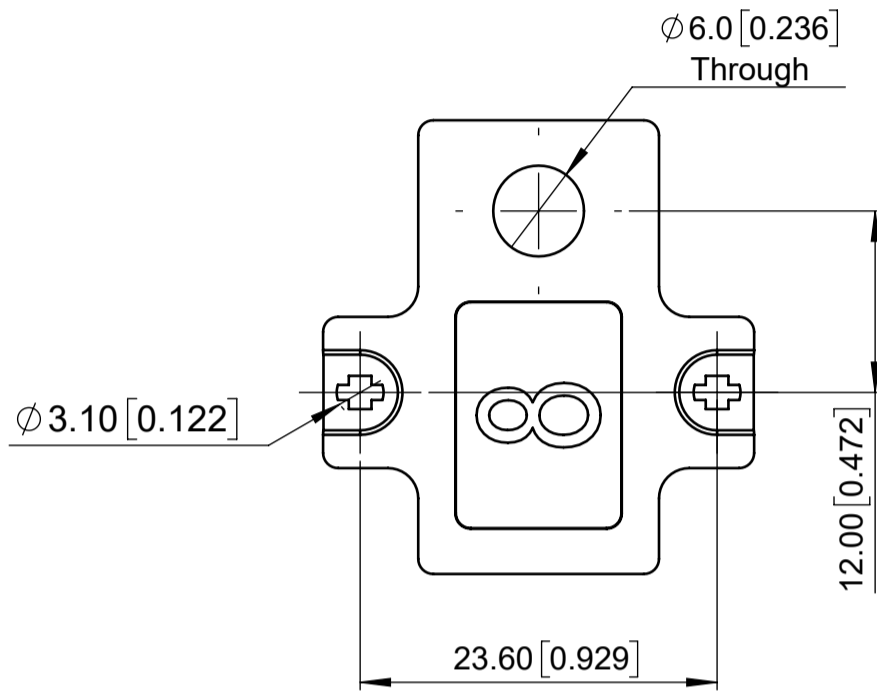
The lock body and bolt allow certain misalignment when fitted in hollow panel. The amount of misalignment is determined by the length of transmission rod.

As a guide, the following graphics show the allowable misalignment for handle height 914mm.



SHIM DETAIL

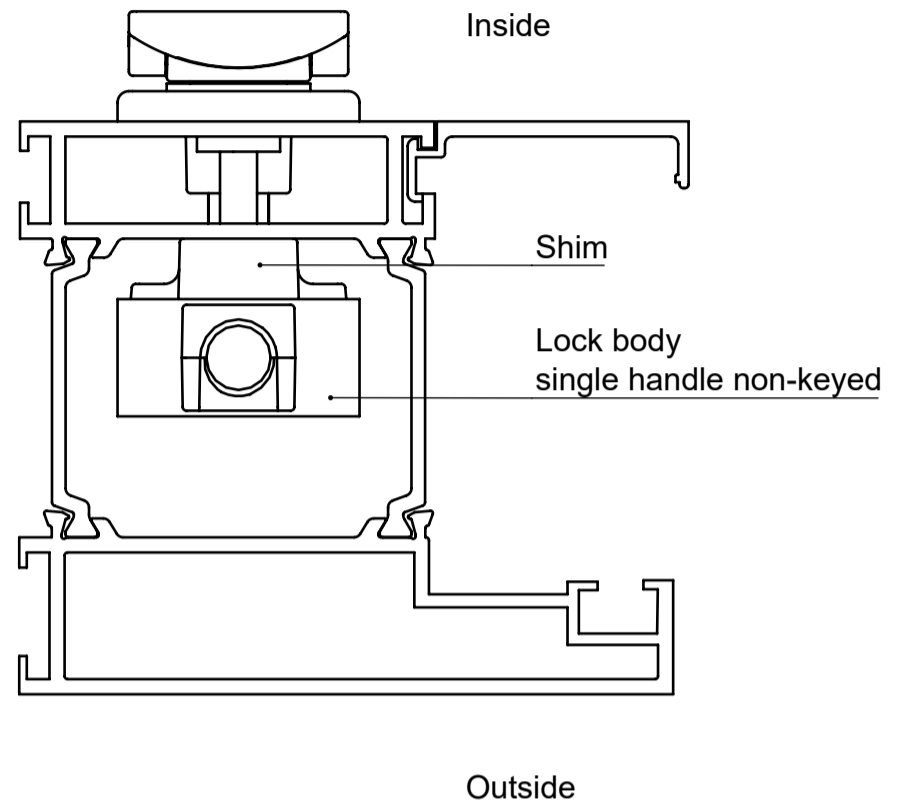
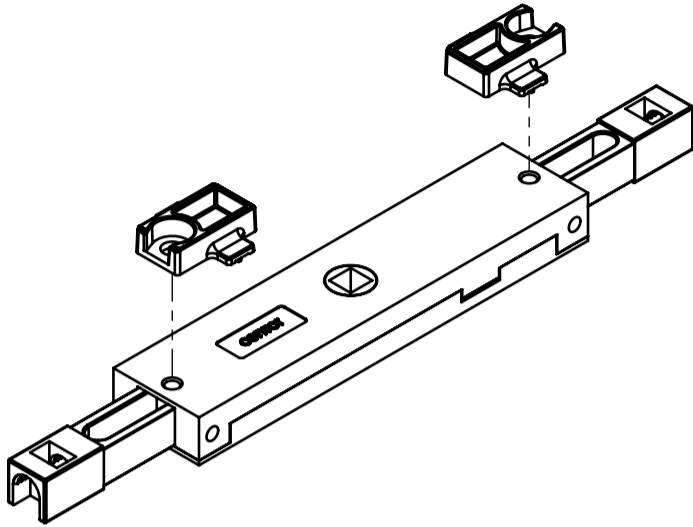
Shim item number	Shim thickness
TPL-038-05-*	5mm [0.197"]
TPL-038-08-*	8mm [0.315"]
TPL-038-16-*	16mm [0.630"]



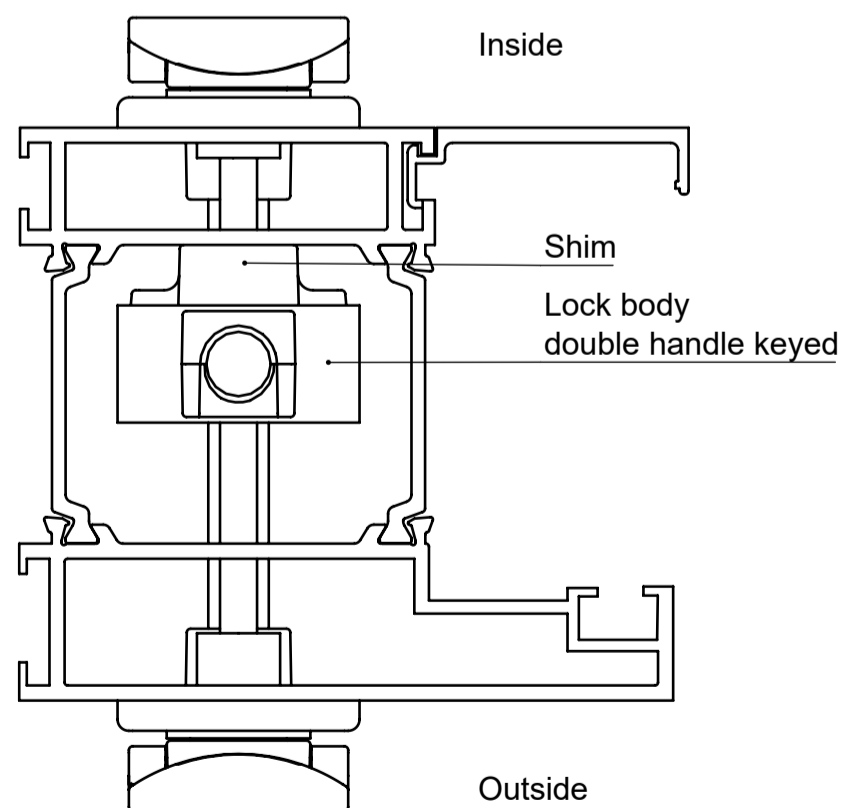
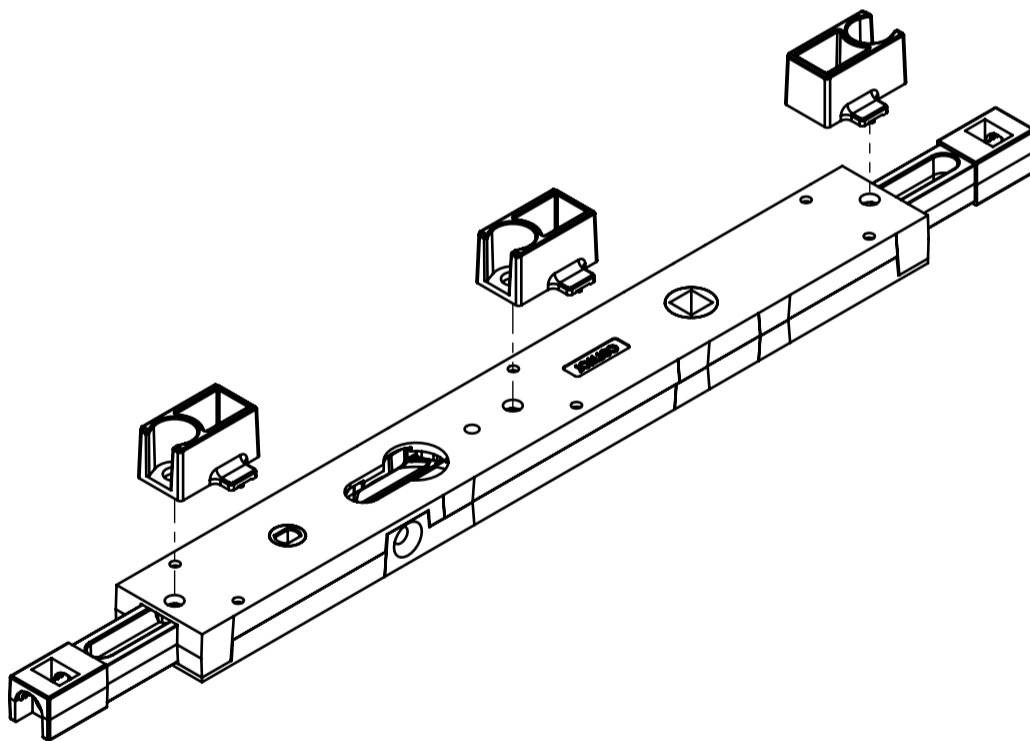
Notes:
8mm [0.315"] shim shown.

LOCK BODY & SHIM ARRANGEMENT

Single handle non-keyed in hollow stile



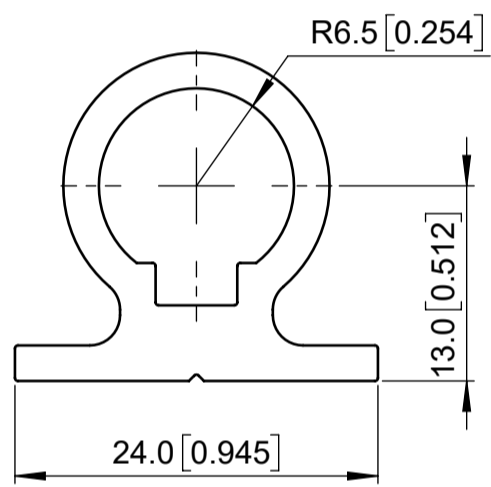
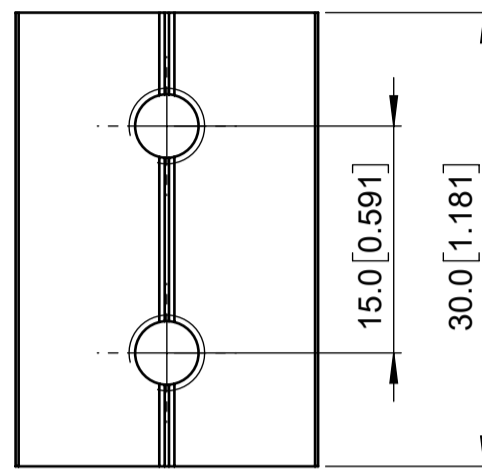
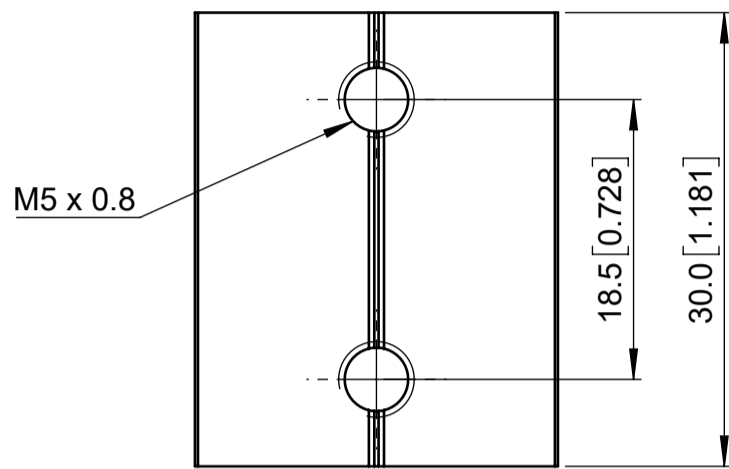
Double handle keyed in hollow stile



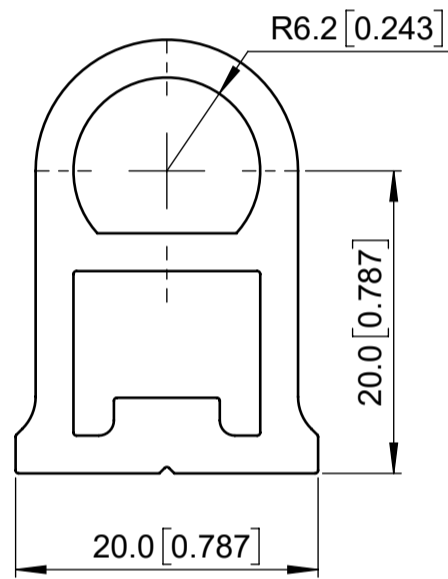
Notes:

1. Regardless the lock body and handle types, the shims must be attached to the lock body surface that faces inside of the stile.

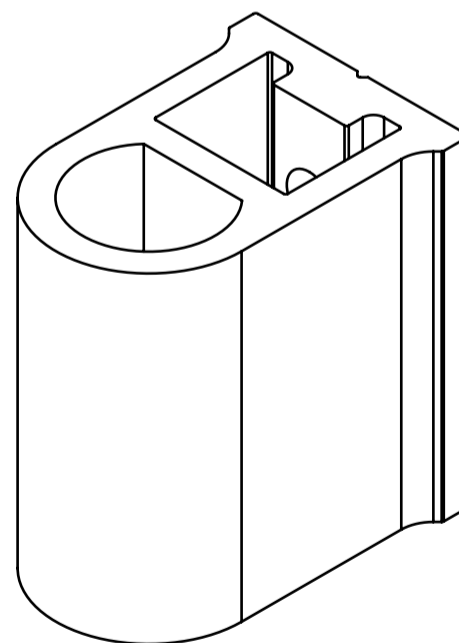
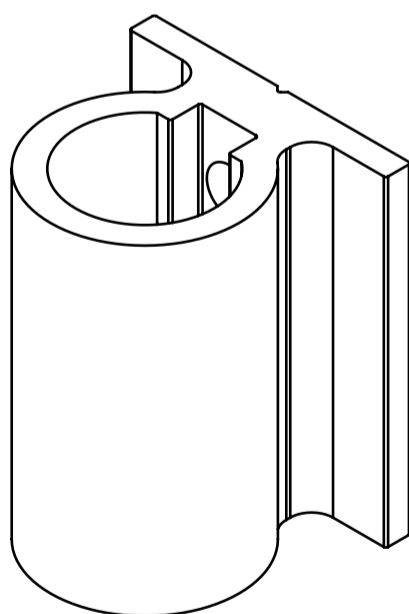
BOLT GUIDE DETAILS



TPL-034

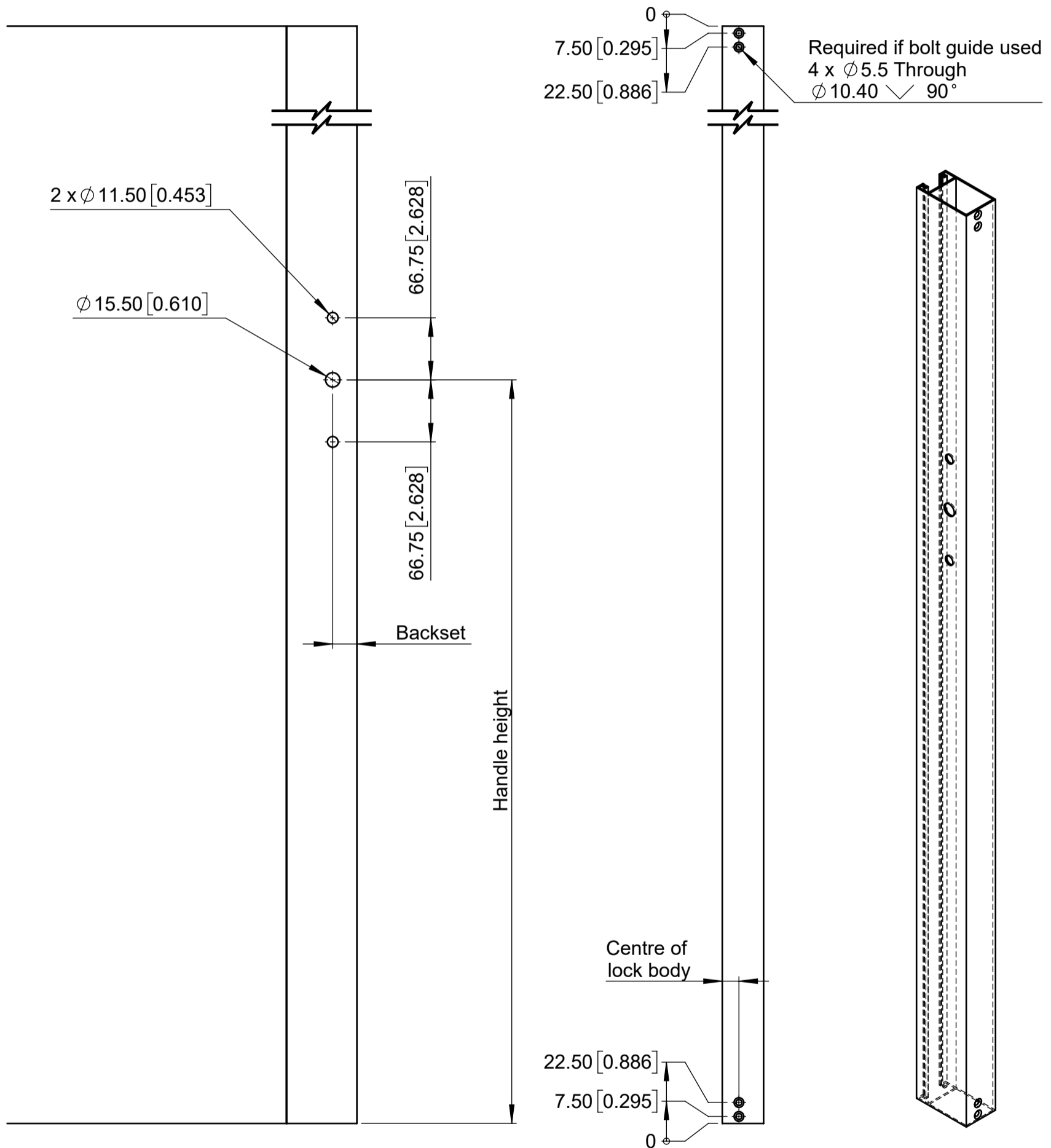


TPL-035



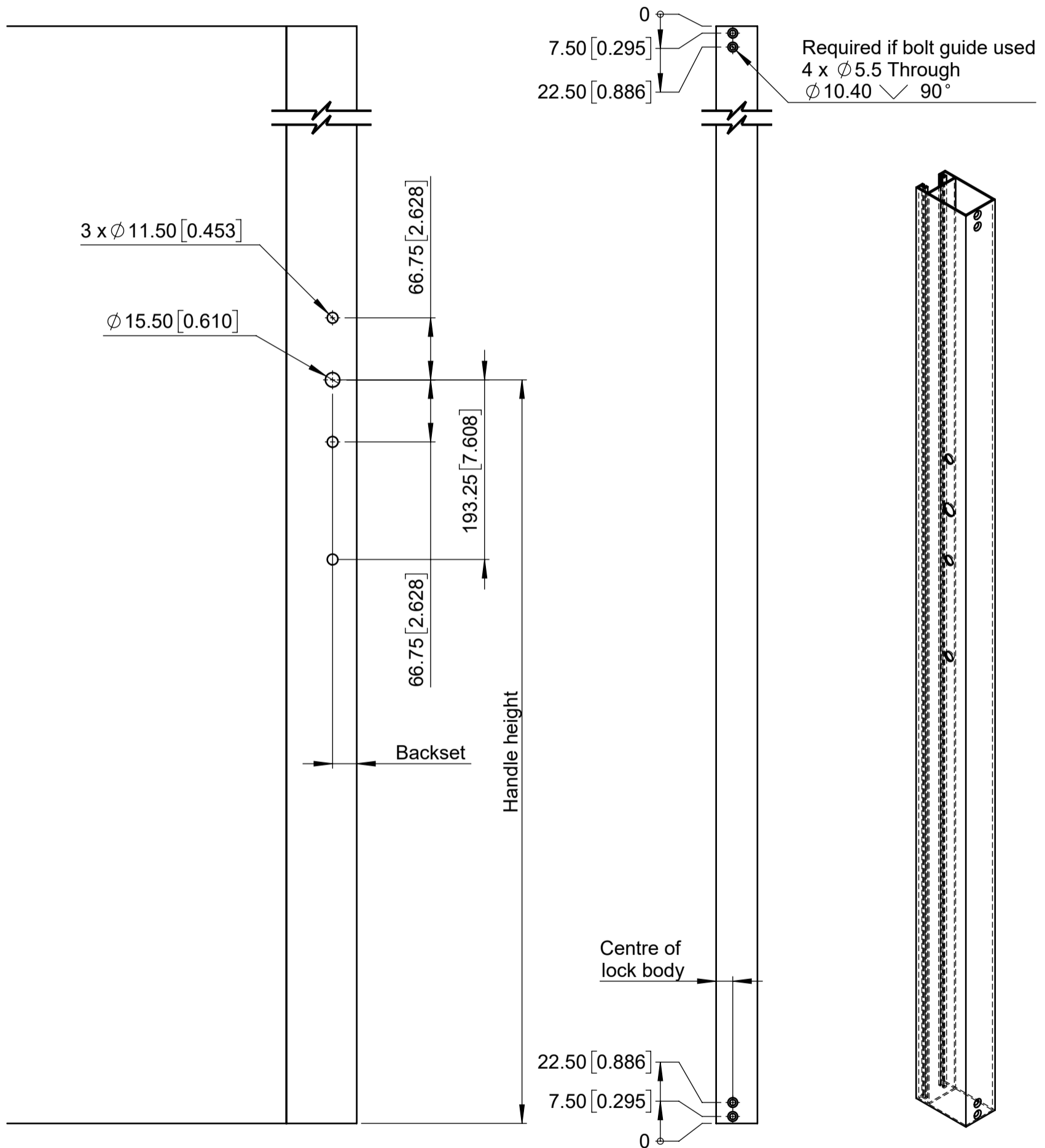
MACHINING DETAIL

Single handle, non-keyed, short



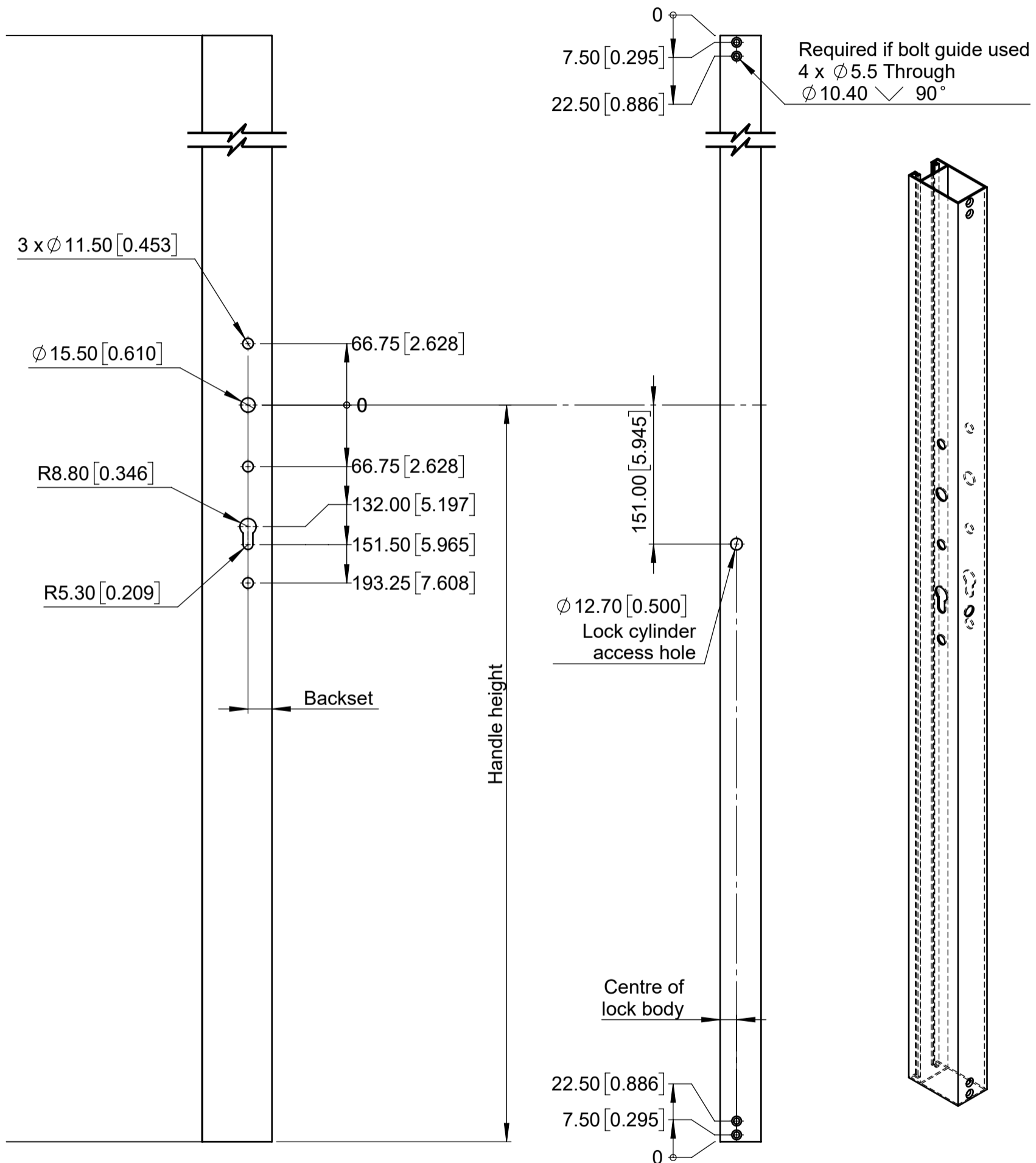
MACHINING DETAIL

Single handle, non-keyed, long

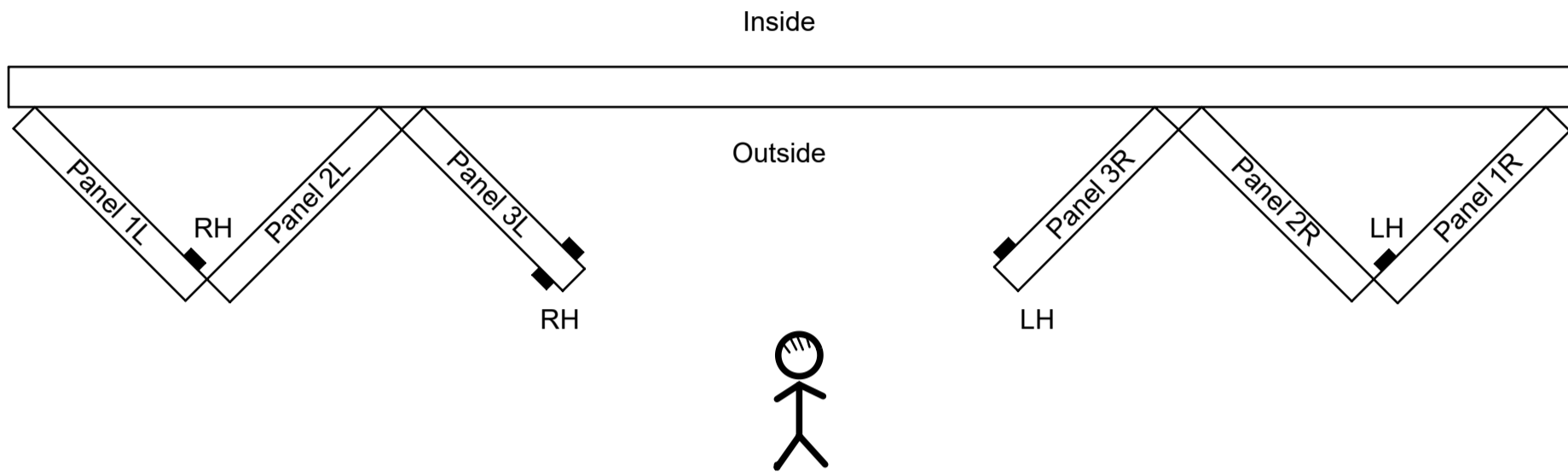


MACHINING DETAIL

Double handle, keyed, long

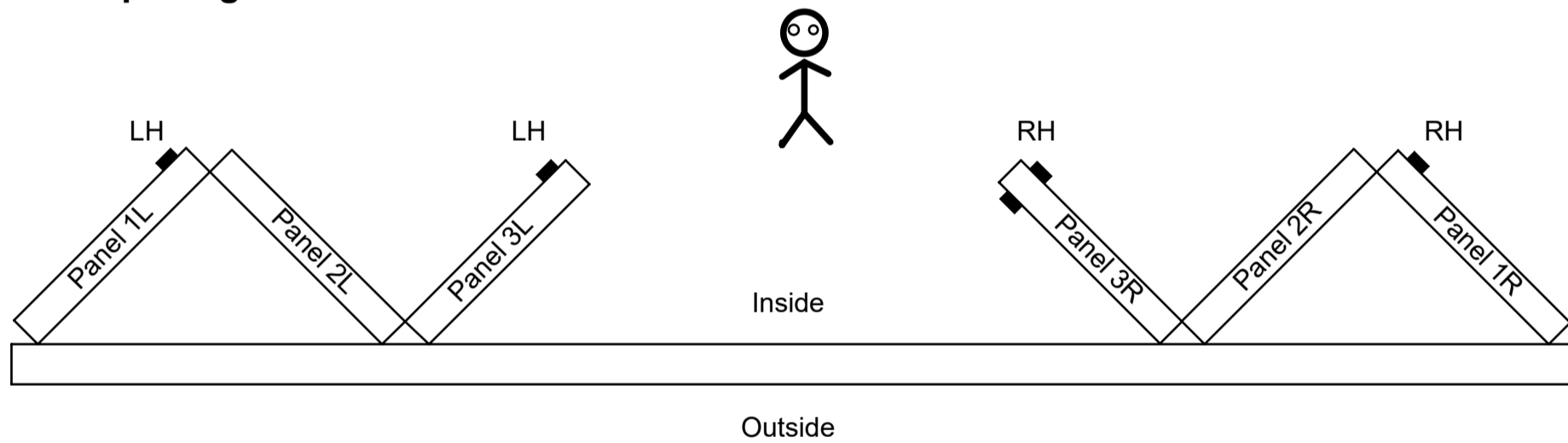


Outward opening



Opening	View	Lock cylinder handing	Location
Outward	From outside	LH - Left hand	Left side of panel
		RH - Right hand	Right side of panel

Inward opening



Opening	View	Lock cylinder handing	Location
Inward	From inside	LH - Left hand	Left side of panel
		RH - Right hand	Right side of panel

Notes:

1. Be careful. The viewing position for defining the handing varies for different features.

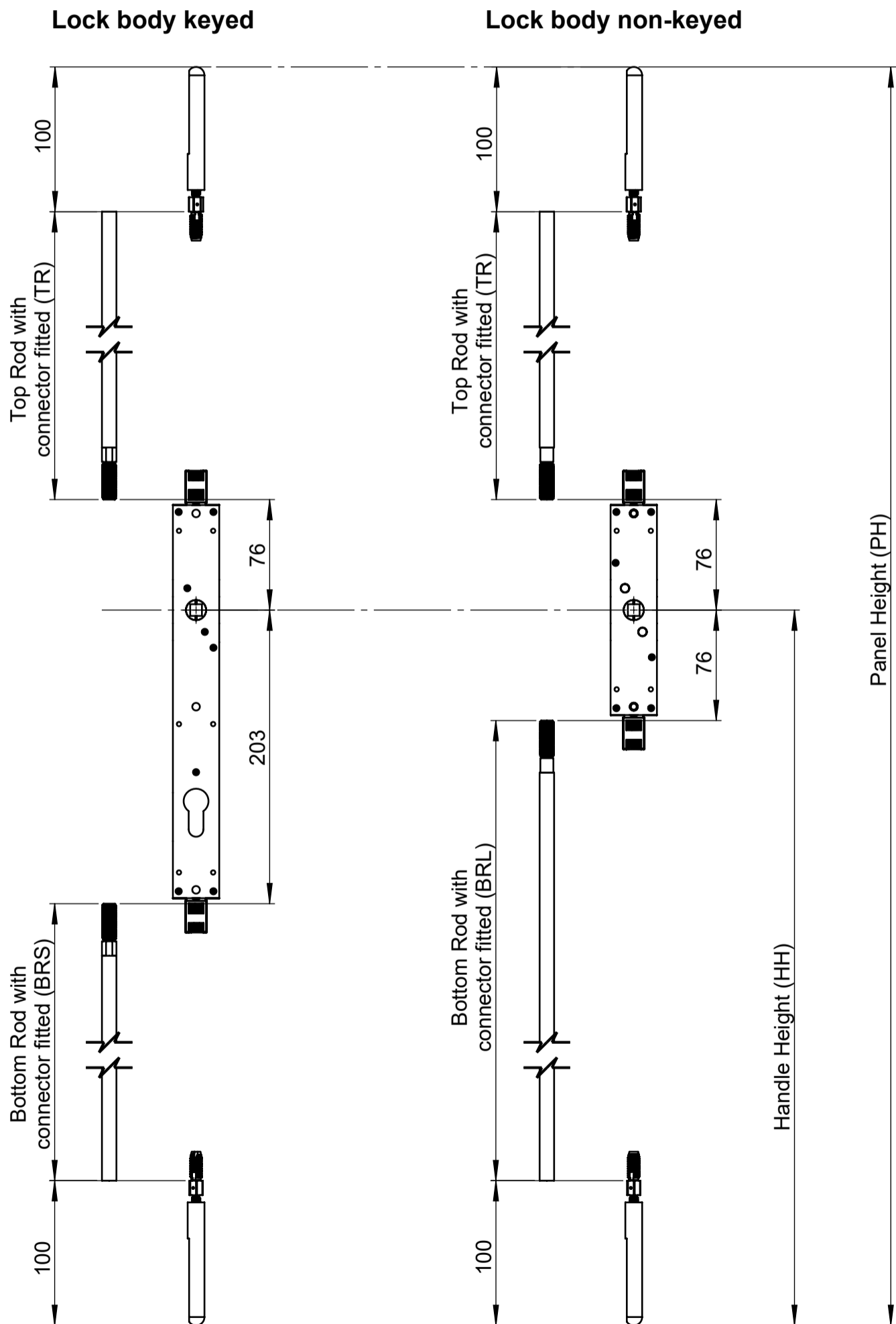
Panels	Always from outside.
Lock cylinders	Outside for outward opening and inside for inward opening.

TRANSMISSION ROD LENGTH FORMULA

Transmission rods with connector fitted

Top	All	$TR = PH - HH - 176$
Bottom	Lock body non-keyed	$BRL = HH - 176$
	Lock body keyed	$BRS = HH - 303$

Notes:
All dimensions in mm.



PANEL AND HANDLE HEIGHT LIMITS

Panel & handle height limits

Handle height			Panel height			
			Min	Max. with transmission rod sets		
				8'	10'	13'
Standard	All lock body	914	1226	2446	3056	4006
Min	Lock body non-keyed	312	624	1844	2454	3404
	Lock body keyed	439	751	1971	2581	3531
Max	Lock body non-keyed	1102	1414	2634	3244	4194
	Lock body keyed	1229	1541	2761	3371	4321

Transmission rod lengths supplied with kits

	Transmission rod sets		
	8'	10'	13'
Bottom	926	926	926
Top	1356	1966	2916

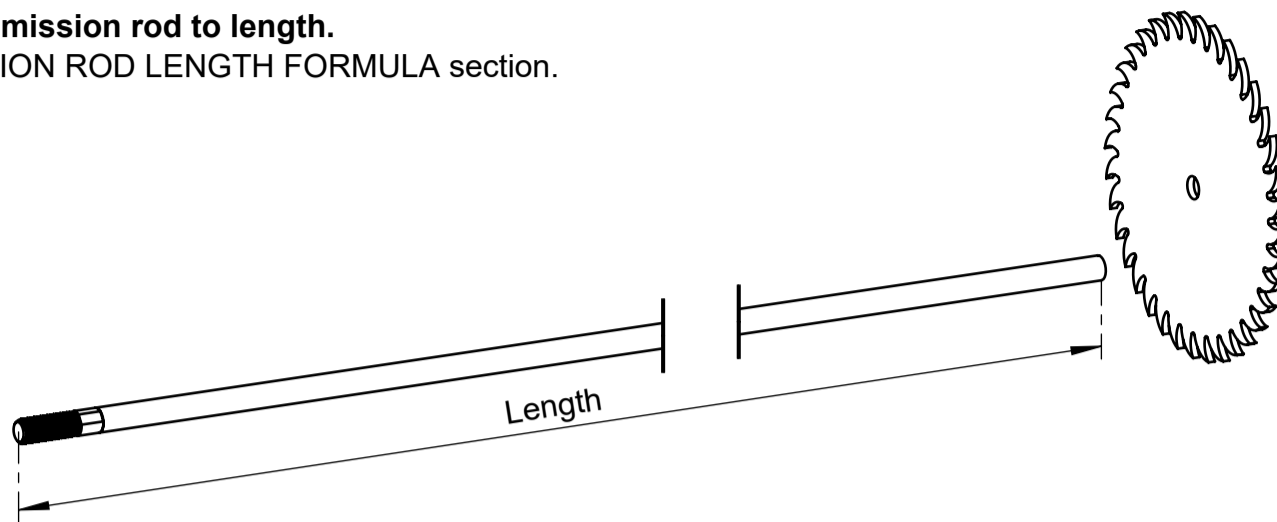
Notes:

1. All dimensions in mm.
2. All transmission rod lengths include connector.
3. Refer to graphic in previous page.

TRANSMISSION ROD AND BOLT ASSEMBLY

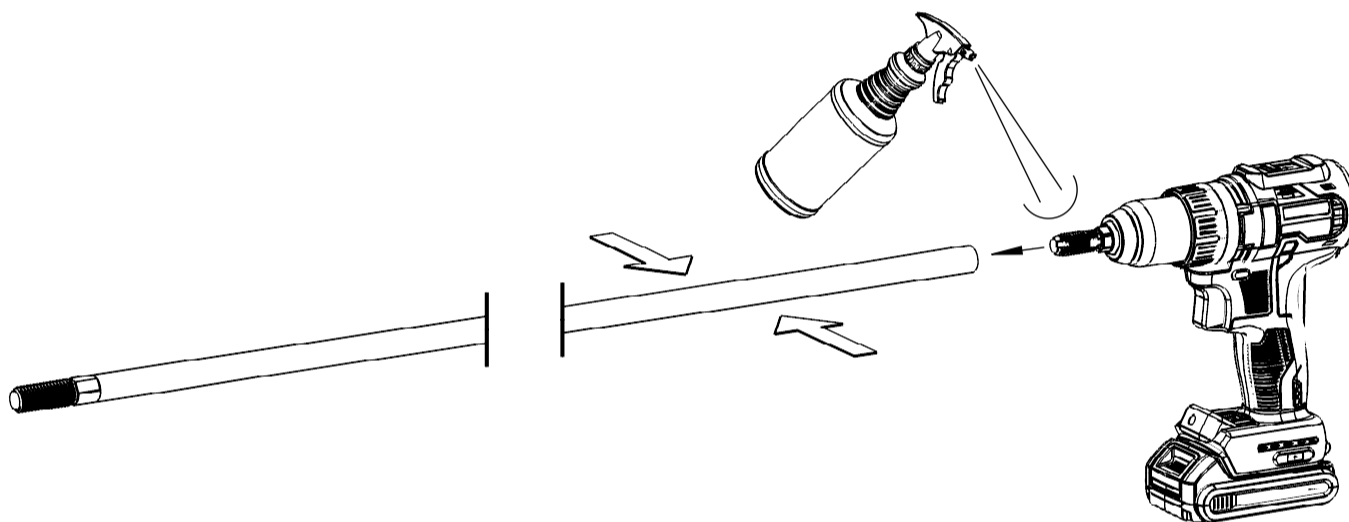
Step 1. Cut the transmission rod to length.

Refer to TRANSMISSION ROD LENGTH FORMULA section.



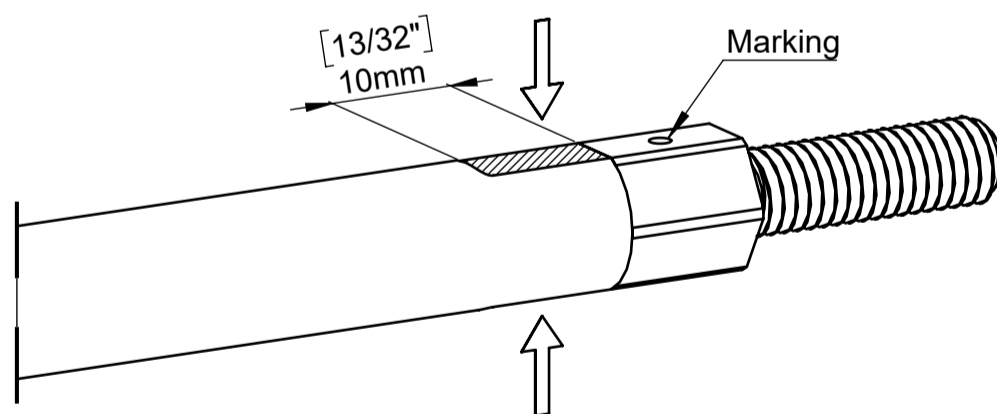
Step 2. Fit the bolt adaptor.

- Clamp the transmission rod so it doesn't rotate.
- Insert the adaptor into power drill and hold firmly - drill with 13mm or 1/2" chuck is recommended.
- Apply thread cutting fluid or WD40 to adaptor.
- Set the drill to low speed and high torque.
- Align the drill with transmission rod and drive adaptor into it until the adaptor bottoms out on its shoulder.



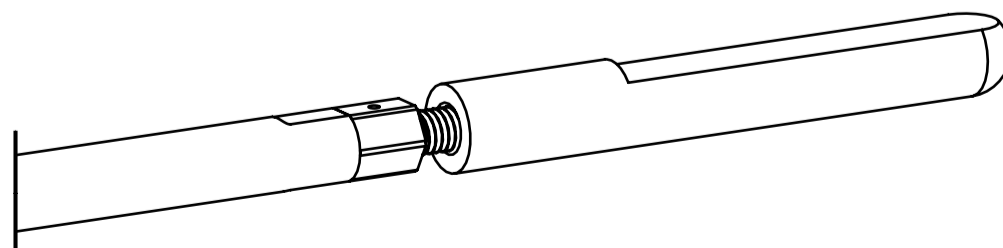
Step 3. Secure the bolt adaptor.

- Use a hammer to dent the tube to prevent the adaptor from rotating. Hit in line with the marking.
- Do the same on the opposite side.



Step 4. Fit the bolt.

- Thread the bolt onto the adaptor.
- After lock installed, adjust the bolt in and out to suit the panel height - refer to **Bolt Adjustment Detail** section.



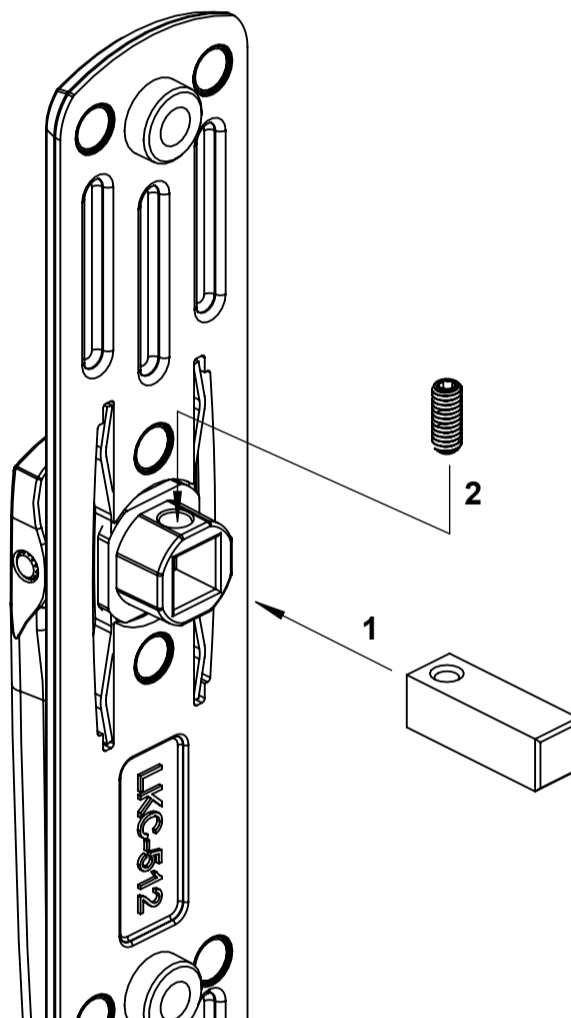
This section is required for zinc diecast handles only

Step 1: Insert the spindle into the square hole as shown.

Step 2: Thread the grub screw into the spindle until it bottoms out. Then unwind for half a turn or so to loosen the spindle.
This will make the handle more flexible when fitting into the lock body.

Refer to TwinPoint Gen2 Handle technical document section **ZINC DIECAST HANDLES H02 - SPINDLE & SCREWS** to select the spindle and mounting screws with the correct lengths or modify them if needed.

For double handle, always fit the spindle to the internal handle.



Centor North America

866 255 0008

+1 630 957 1000

customerserviceusa@centor.com

centor.com